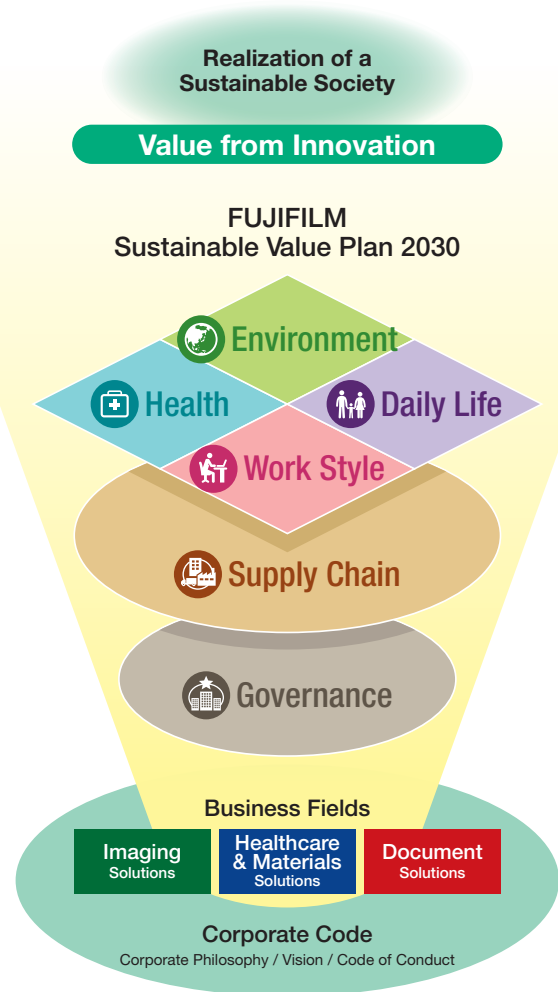


1.2.7 The CSR Plan of the Fujifilm Group Sustainable Value Plan 2030 (SVP 2030)

The Fujifilm Group announced its Sustainable Value Plan 2030 (SVP 2030) in August 2017. The new plan sets itself apart from previous medium-term CSR plans in characteristically targeting FY2030 as its longterm goal, which is expected to lay the foundations of the Group’s business management strategies for sustainable growth.

Under SVP 2030, the Fujifilm Group will introduce further measures to resolve social issues through our business activities, including the launch of innovative products, technologies and services, in our aim to develop into a company that can make a greater contribution to creating a sustainable society.



SVP 2030 Priority Area/Priority Issues (Materiality)

	Solving social issues through business activities Contribution (Opportunities)	Conscious on environmental and social impact within business processes Impact (Risks)	Fujifilm Group's Contribution to SDGs
Environment 1. Address climate change 2. Promote recycling of resources 3. Address energy issues toward a non-carbon society. 4. Ensure product and chemical safety.	● ● ● ●	● ● ●	
Health 1. Fulfill unmet medical needs. 2. Improve accessibilities to medical services. 3. Contribute to identifying diseases at an early stage. 4. Contribute to health promotion and beauty. 5. Promote management of a healthy workplace.	● ● ● ●	● (Employees)	
Daily Life 1. Contribute to creating a safe and secure society. 2. Contribute to enriching humanity and relationships between people.	● ●		
Work Style 1. Create environments that lead to motivated workplace (provide solution services). 2. Develop and utilize diverse human resources.	●	● (Employees) ● (Employees)	
Base for business activities			
Supply Chain Strengthen CSR foundations across the entire supply chain including factors of the environment, ethics, and human rights.			
Governance Improve and maintain governance structures by further disseminating an open, fair and clear corporate culture.			