

FUJIFILM

INSTRUCTION GUIDE

THERMAL PHOTO PRINTER

ASK-300

PRINTER DRIVER SOFTWARE

(for Mac OS X)

Ver. 2.60
Mac OS X 10.14



Sixth Edition

Ref.No. PP3-B1402E6

Macintosh, Apple, and Mac OS are registered trademarks of Apple Inc.
Adobe and Adobe Photoshop are registered trademarks of Adobe Systems Incorporated.
Other software packages mentioned in this manual are the registered trademarks of their respective companies.

Contents

1. System requirements	4
2. Download and decompression of printer driver and ICC profile .	5
3. Installation	6
3.1 Installation of the printer driver.....	6
4. Applying ICC profile in ColorSync	9
5. Uninstallation.....	11
6. Features	12
6.1 Standard print settings in Mac OS.....	12
6.2 Printer Features settings.....	14
6.2.1 Feature Sets: Options.....	14
6.2.2 Feature Sets: Gamma	15
6.2.3 Feature Sets: Brightness	16
6.2.4 Feature Sets: Contrast	17
6.3 Supply Levels	18
6.4 Error indication.....	19
7. Notes and other information	21
7.1 Notes	21
7.2 Print color adjustment tips	23
7.2.1 Adjusting the print color tones as you like	23
7.2.2 Printing images on the print size: “6x4 inchx2 (152x102mmx2)”	23
7.3 Prohibited matter	23
7.4 Exemption from responsibility.....	23
7.5 End User Software License Agreement.....	24

1. System requirements

Operating system	: Mac OS 10.14
Computer	: It must meet the system requirements for running the Mac OS properly.
Hard disk	: at least 512 MB free space
USB cable	: 2 m or shorter recommended

<Note> The ASK-300 supports USB 2.0 (Hi-Speed USB) interface.

As USB 2.0 is fully compatible with USB 1.1, the ASK-300 can be used with a computer supporting USB 1.1 interface.

To use the ASK-300 with USB 2.0 (Hi-Speed USB), connect it to a computer that supports USB 2.0 (Hi-Speed USB). For USB 2.0 (Hi-Speed USB) compatibility of your computer, contact the manufacturer of the computer.

<Note> The Matte / High quality (UltraFine) Modes are only available on printers with the new version of firmware adapted to the modes.

2. Download and decompression of printer driver and ICC profile

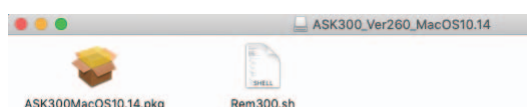
- 1) For printer driver and profile, contact the dealer of the printer.
- 2) Decompress the compressed files by double-clicking them, and save them in an arbitrary folder.

3. Installation

- <Note> - If the printer driver of old version has been already installed, uninstall it first, and then install the printer driver newly.
- An administrator authority is required to install this printer driver.
 - When you downloaded the printer driver through Web-site, because there are necessary installation procedures, perform necessary procedures according to the following “<Note> When you downloaded the printer driver through Web-site.”

3.1 Installation of the printer driver

- 1) Start the computer.
- 2) Open the folder, and then double-click "ASK300MacOSX10.14.pkg". (Fig. 1)



<Fig. 1>

<Note> When you downloaded the printer driver through Web-site

If you downloaded the printer driver through Web-site, the “ASK300MacOSX10.14.pkg” can’t be opened because it is from an unidentified developer.> dialog is displayed while installing.

In that case, Click [OK] to close the dialog, and then perform the following procedures.

- (1) Click “ASK300MacOSX10.14.pkg” again with keeping to press the “control” key.
- (2) Click [OK] in the pull-down menu.

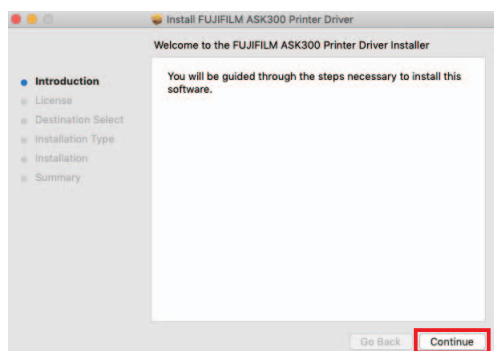
The “ASK300MacOSX10.14.pkg” if from an unidentified developer. Are you sure you want to open it?> dialog is displayed.

- (3) Click [Open].

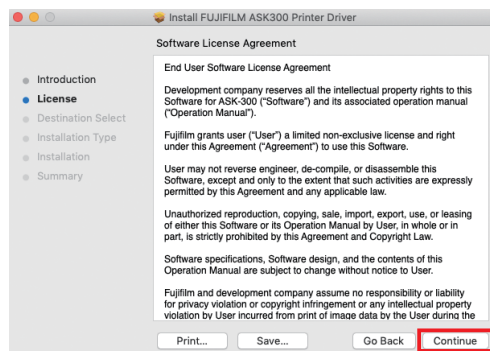
The installation starts.

- 3) Click [Continue] in the introduction window. (Fig. 2)
- 4) Read the software license agreement, and then click [Continue]. (Fig. 3)

<Note> End User Software License Agreement is described in Section 7.5.

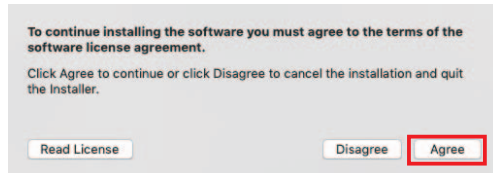


<Fig. 2>

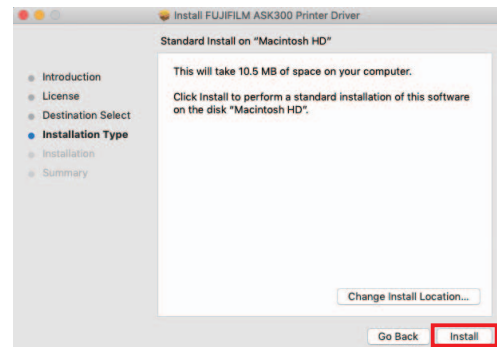


<Fig. 3>

- 5) When you agree with the terms and conditions of the agreement, click [Agree]. (Fig. 4)
- 6) Click [Install]. (Fig. 5)

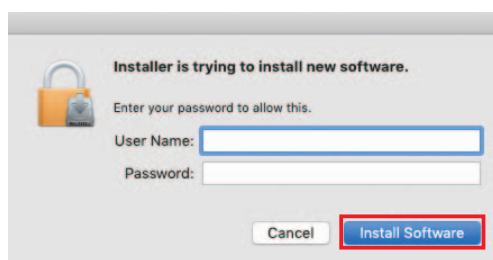


<Fig. 4>



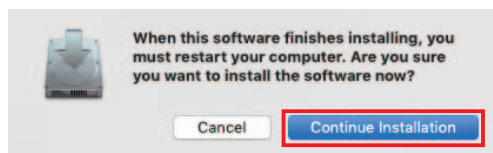
<Fig. 5>

- 7) Enter a name and password, and click [OK] or [Install Software]. (Fig. 6)

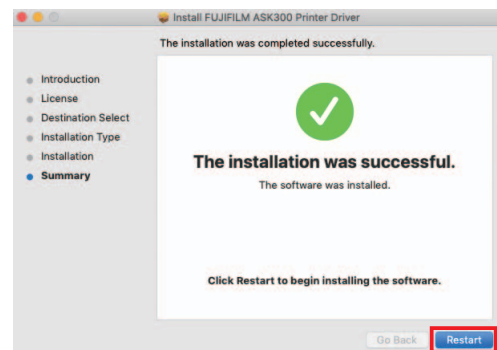


<Fig. 6>

- 8) Click [Continue Installation]. (Fig. 7)
- 9) Click [Restart] to restart the computer. (Fig. 8)



<Fig. 7>

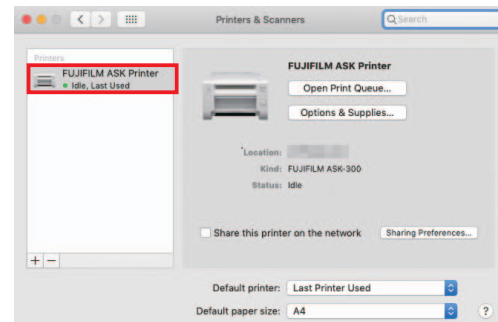


<Fig. 8>

- 10) Turn on the printer, and then connect it to the computer.
- 11) Select "System Preferences..." in Apple menu to open the System Preferences window. (Fig. 9)
- 12) Click "Print & Fax" or "Print & Scan" in the System Preferences window. (Fig. 10)
Check that the printer name is added to the list of printers in the Print & Fax window.
<Note> The printer name is "FUJIFILM ASK Printer."

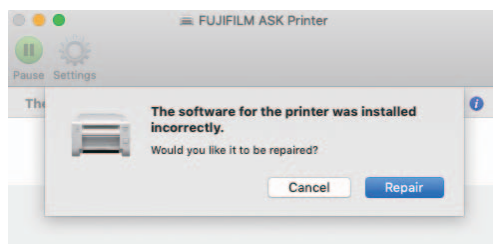


<Fig. 9>



<Fig. 10>

- 13) Select the installed printer ("FUJIFILM ASK Printer") in the list of printers in the above <Fig. 10>.
- 14) Click [Open Print Queue...]. The dialog <Fig. 11> is displayed.
- 15) Click [Repair].
The printer becomes available.



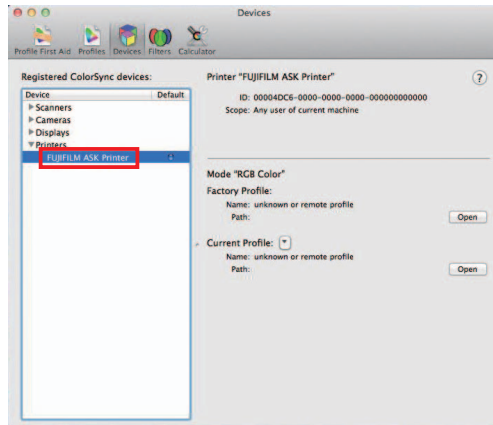
<Fig. 11>

4. Applying ICC profile in ColorSync

- 1) Open the decompressed folder containing the printer driver and ICC profile.
- 2) Copy the ICC profile into the first Profiles folder in Macintosh HD > Library > ColorSync.
- 3) Click ColorSync Utility in Macintosh HD > Applications > Utilities.

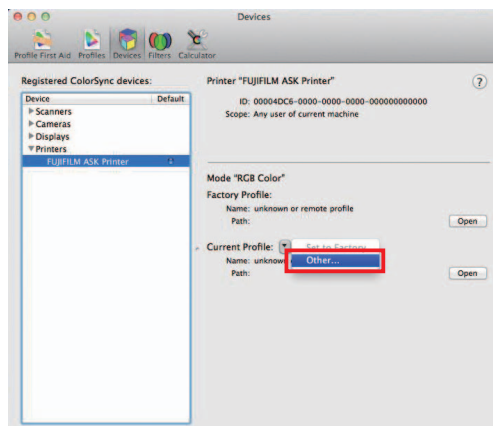
Click the Devices tab in the ColorSync Utility window.

Select "FUJIFILM ASK Printer" from Printers in Registered ColorSync devices list box. (Fig. 12)



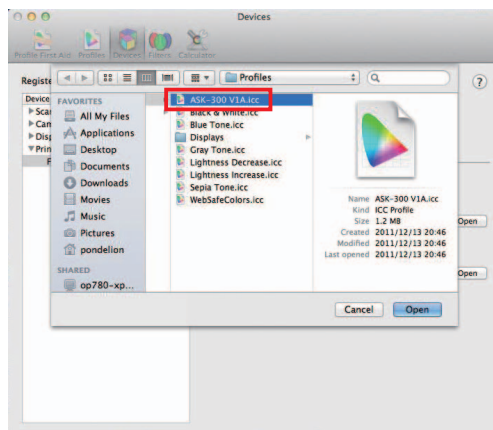
<Fig. 14>

- 4) Click the drop-down box in "Current Profiles," and select "Other..." (Fig. 13)



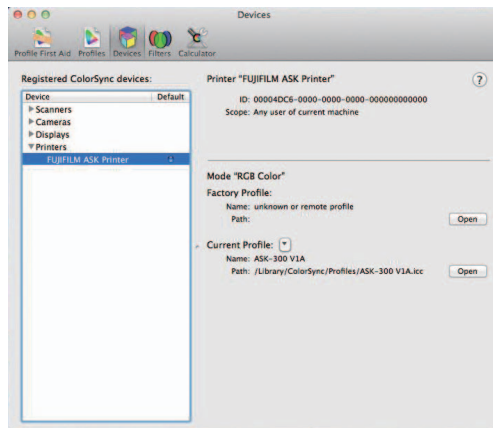
<Fig. 15>

- 5) Select "ASK-300 V1A.icc" and then click [Open]. (Fig. 14)
<Note> Select "ASK-300 V1A.icc" in Macintosh HD > Library > ColorSync > Profiles.



<Fig. 16>

- 6) The ICC profile is applied to images. (Fig. 15)



<Fig. 17>

- 7) When the FUJIFILM ASK printer is selected in the Print window of an application, the profile selected in Step 6 is automatically applied to images.
For color adjustment performed in the application, refer to the user manual of the application.

5. Uninstallation

- 1) Click Terminal in Macintosh HD > Applications > Utilities.
- 2) If the user does not have an administrator authority, change the user's privilege by using the "su" command.
- 3) Go to the directory storing the uninstallation script (Rem300.sh), and execute the script.

```
./Rem300.sh
```

- 4) When a password is required, enter the administrator password.
- 5) When the uninstallation is successfully completed, the following message is displayed.

```
Uninstallation was completed.  
Is a computer rebooted?(Y/N):
```

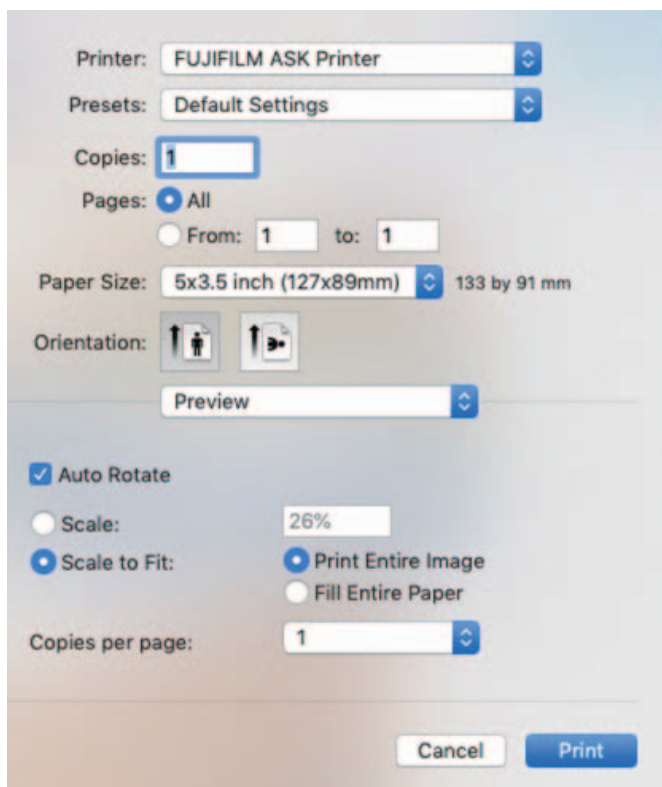
- 6) Enter "Y" or "y" to restart the computer.
If the computer does not restart automatically, quit all running applications, and then restart the computer manually.

6. Features

6.1 Standard print settings in Mac OS

In the upper half of the dialog, you can set the basic printing functions. In the lower half of the dialog, you can make detailed settings or check each selected item.

By selecting “Preview”, you can set the OS standard print function.



<Fig.16 Print dialog box-Preview>

1) Copies

Set the number of copies.

2) Paper Size

Sets the paper size.

The number of pixels corresponding to each paper size is shown in the table below.

Paper size	Pixel count
5 x 3.5 inch (127 x 89mm)	1568 x 1076
6 x 4 inch (152 x 102mm)	1864 x 1228
5 x 7 inch (127 x 178mm)	1568 x 2128
6 x 8 inch (152 x 203mm)	1864 x 2422
6 x 9 inch (152 x 229mm)	1864 x 2730
6 x 4 inch x 2 (152 x 102mmx2) *	1864 x 1228 x 2

* Use the 6 x 8 inch or 6 x 9 inch paper when you select 6 x 4 inch x 2 (152 x 102 mm x 2).

The number of pixels vary depending on the paper size.

3) Orientation

Sets the orientation of printing data.

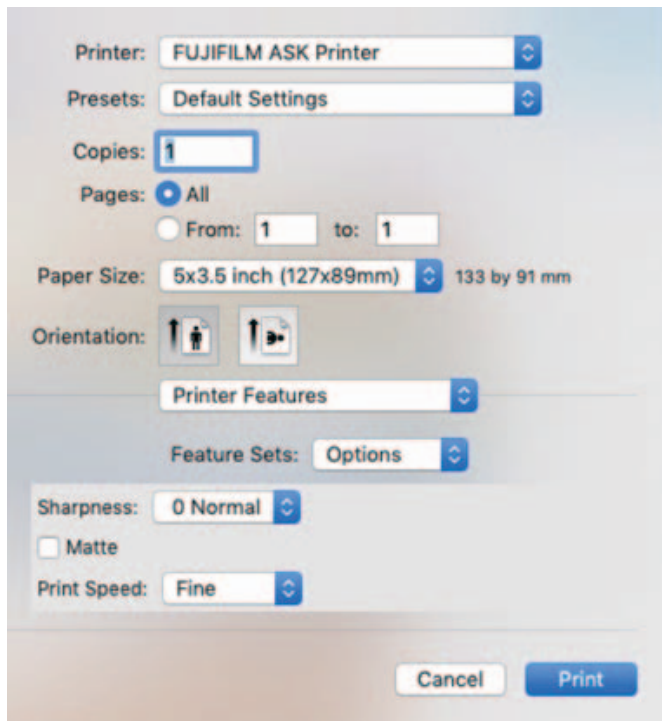
This is an OS default setting.

- 4) Auto Rotate
Sets whether to rotate the image automatically according to the paper orientation.
- 5) Scale
Sets the scaling range. (Range: 1 to 10000)
Default value: depends on the print image size.
- 6) Scale to Fit
Selects the image layout method for the paper.
Print Entire Image : layouts the entire image on paper. The margins may appear depending on the image size.
Fit Entire Paper : prints the image on the entire paper. Some areas cannot be printed depending on the image size.
- 7) Copies per page
Specifies the number of images per paper. (Adjustment value: 1, 2, 4, 6, 9, 16)

6.2 Printer Features settings

By selecting “Printer Features”, you can make detailed settings for each item in “Feature Sets.”

6.2.1 Feature Sets: Options



<Fig.17 Print dialog box-Feature Sets: Options>

1) Sharpness

Sets the sharpness (outline).

none / -3 Soft / -2 / -1 / 0 Normal / 1 / 2 / 3 Hard

none : No outline correction

-3 to 3 : The smaller the value is, the softer the outline becomes.

The larger the value is, the sharper the outline becomes.

2) Matte

Print finish of matte is set.

* When Matte is selected, printing is performed at the UltraFine speed regardless of the print speed setting.

* When old firmware is loaded, printing is performed at the Fine speed with the processing table file for the UltraFine speed without the mat processing even if you select Matte.

3) Print Speed

Printing speed is set.

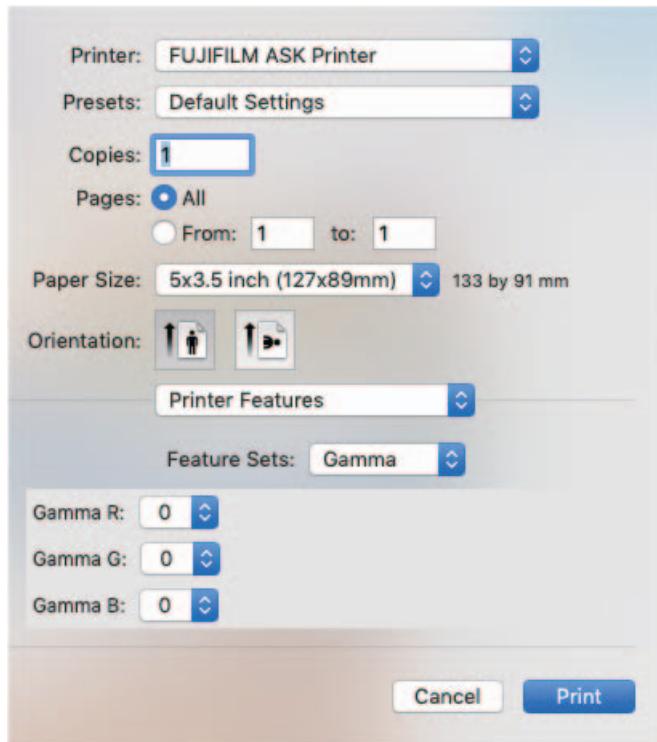
Fine : Printing is performed at the standard speed. (Standard quality picture mode)

UltraFine : Printing is performed at the speed slower than the standard speed. (High quality picture mode)

* When Matte is selected, printing is performed at the UltraFine speed regardless of the print speed setting.

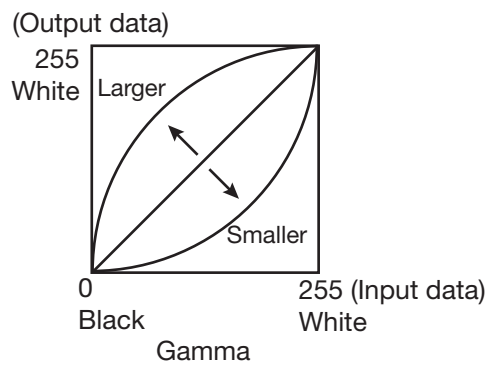
* When old firmware is loaded, printing is performed at the Fine speed with the processing table file for the UltraFine speed by selecting UltraFine.

6.2.2 Feature Sets: Gamma

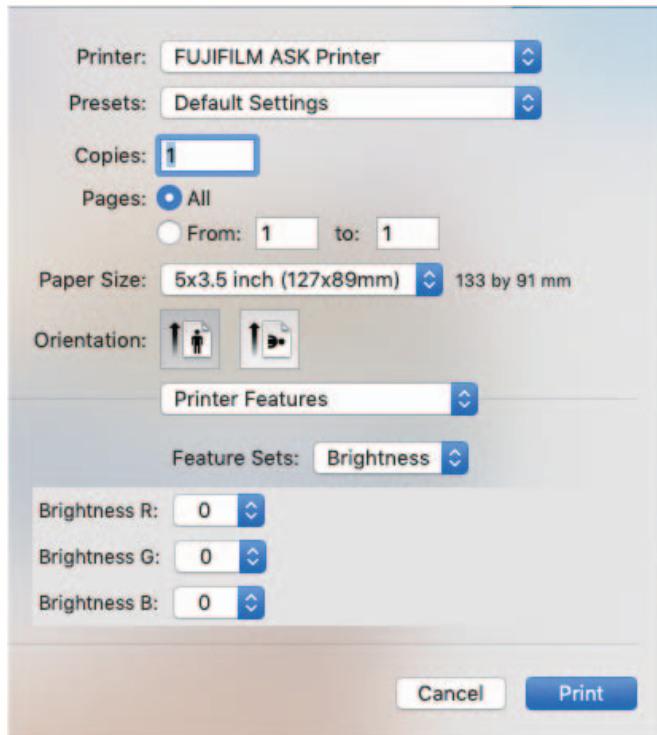


<Fig.18 Print dialog box-Feature Sets: Gamma>

Sets the medium tone of image. Adjustment value: -5 to +5
The smaller the gamma value is, the darker the medium tone becomes.



6.2.3 Feature Sets: Brightness



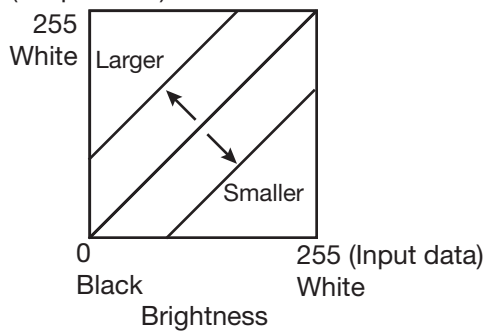
<Fig.19 Print dialog box-Feature Sets: Brightness>

Sets the brightness of image. Adjustment value: -64 to +64
The smaller the value is, the darker the image becomes.

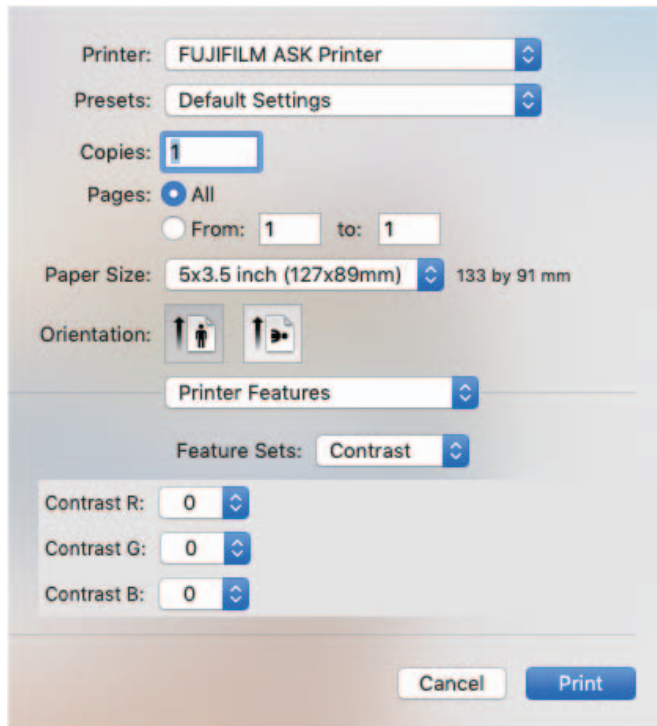
* You can set the value in the following increments.

- 16 to +16: 1 by 1
- 32 to -16 / +16 to +32: 2 by 2
- 64 to -32 / +32 to +64: 4 by 4

(Output data)



6.2.4 Feature Sets: Contrast



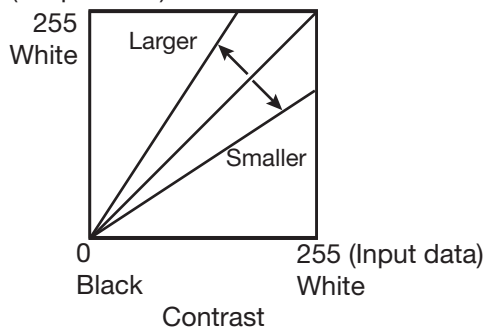
<Fig.20 Print dialog box-Feature Sets: Contrast>

Sets the contrast of image. Adjustment value: -64 to +64
The larger the value is, the harder the contrast becomes.

* You can set the value in the following increments.

- 16 to +16: 1 by 1
- 32 to -16 / +16 to +32: 2 by 2
- 64 to -32 / +32 to +64: 4 by 4

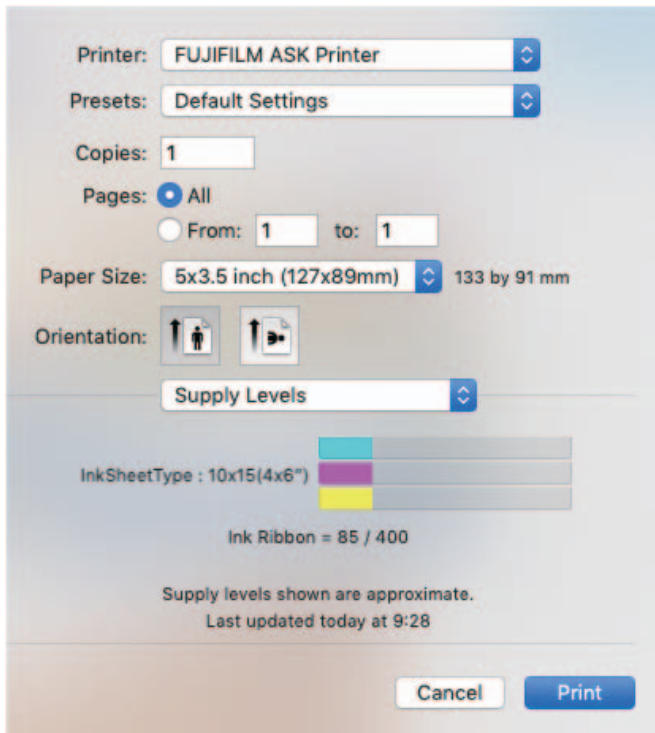
(Output data)



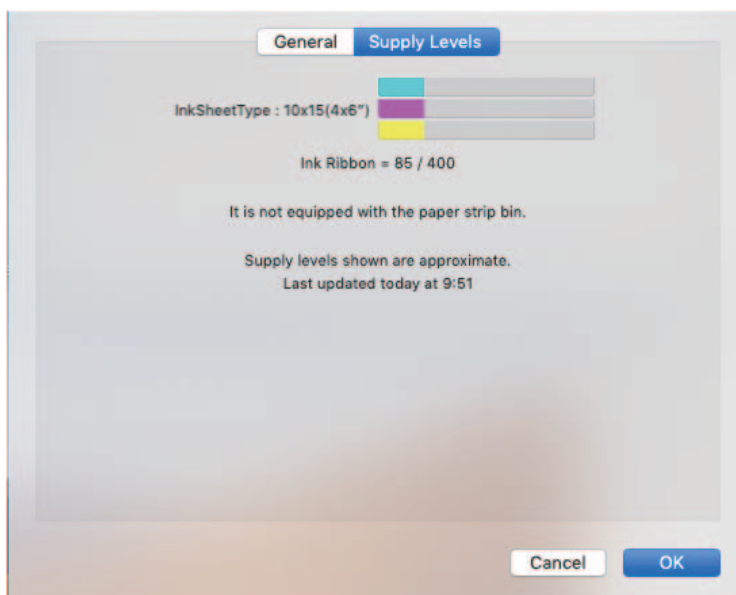
6.3 Supply Levels

By selecting “Supply Levels”, the size of loaded paper and the approximate remaining amount of ink ribbon are displayed.

You can check the supply levels at the Print Queue setting dialog.



<Fig.21 Print dialog box-Supply Levels>



<Fig.22 Print Queue setting dialog box-Supply Levels>

InkSheetType : The size of the loaded paper is displayed by the information from the printer.

Ink Ribbon : The approximate remaining amount of ink ribbon is displayed by the information from the printer.

<Note> If an error has occurred, an error message will also appear on these dialogs. For details on the error, refer to “6.4 Error indication.”

6.4 Error indication

No.	Error indication	Error details and release operations
1	Printer is not connected.	<ul style="list-style-type: none"> The printer is not connected. The printer cannot be recognized.
2	Something is wrong with the printer. Turn the printer Off and then On again, and try again.	<ul style="list-style-type: none"> An error has occurred in the printer. No response from printer due to communication error.
3	Mechanical Error Set Paper again.	<ul style="list-style-type: none"> A mechanical error that requires paper reloading has occurred.
4	Mechanical Error Turn the printer Off and then On again, and try again.	<ul style="list-style-type: none"> A mechanical error that requires the printer to be turned ON/OFF has occurred.
5	Printing unit is opened.	<ul style="list-style-type: none"> Close the printing unit.
6	Printing unit is opened while printing.	<ul style="list-style-type: none"> Reload paper and close the printing unit.
7	Ink ribbon and paper type do not match.	<ul style="list-style-type: none"> Change paper or ink ribbon.
8	Ink ribbon is not correctly installed.	<ul style="list-style-type: none"> Install ink ribbon.
9	Ink ribbon end.	<ul style="list-style-type: none"> Change ink ribbon.
10	Paper empty.	<ul style="list-style-type: none"> Change paper.
11	The ink ribbon is not standard.	<ul style="list-style-type: none"> Change ink ribbon.
12	The printer was turned off while printing. Turn on a printer.	<ul style="list-style-type: none"> Turn on the printer.
13	Paper jam. Set Paper again.	<ul style="list-style-type: none"> Reload paper.
14	Paper size of printer driver and ink ribbon type do not match.	<ul style="list-style-type: none"> Change the paper size setting in the printer driver or change ink ribbon.
15	Ink ribbon empty. Exchange ink ribbons.	<ul style="list-style-type: none"> Change ink ribbon.
16	Paper end.	<ul style="list-style-type: none"> Change paper.
17	It is not equipped with the Paper strip bin.	<ul style="list-style-type: none"> Attach the Paper strip bin.
18	Ink ribbon error. Set Paper again.	<ul style="list-style-type: none"> Reload paper.
19	Ink ribbon error. Set Paper and ink ribbon again.	<ul style="list-style-type: none"> Reload paper and reinstall ink ribbon.

<Note> The error message is not automatically deleted even if the printer error is cleared.

For how to delete the message, refer to “Notes on operations after an error occurs” on the next page.

<Error indication in the job list section>

Some error messages are displayed in the job list.

No.	Error indication	Error details and release operations
1	0x****, Size setting or ribbon is incorrect. Change size.	<ul style="list-style-type: none">• Change the paper size setting in the printer driver or change ink ribbon.
2	0x****, Image size is out of range. Reset and try again.	<ul style="list-style-type: none">• The transferred image size is out of range.<ul style="list-style-type: none">* This error occurs when the image size is inappropriate due to a communication error.
3	0x****, Communication is incorrect. Reset and try again.	<ul style="list-style-type: none">• An unexpected code was obtained.<ul style="list-style-type: none">* This error occurs when an unexpected code is received due to a communication error.
4	0x****, Time-out error occurred. Reset and try again.	<ul style="list-style-type: none">• The memory full condition lasts for 3 minutes.<ul style="list-style-type: none">* This error occurs when printing does not start due to a printer error.

<Note> Alphanumeric characters are displayed in "****" (command information obtained from the printer is displayed).

<Restriction of error indication>

In the case of the error with long sentence, there is a case that the middle of the sentence is displayed with "..." and the whole sentence is not displayed.

Refer to the following list for the correspondence with the error indication on screen and the whole sentence of error about such errors.

No.	Error indication on screen	Whole sentence of error
3	Something is wrong with the prin...and then On again, and try again.	Something is wrong with the printer. Turn the printer Off and then On again, and try again.
5	Mechanical Error. Turn the print...and then On again, and try again.	Mechanical Error. Turn the printer Off and then On again, and try again.

<Note> Click the [i] mark on the screen to display the whole sentence.

<Notes on operations after an error occurs>

- Printing does not start automatically even if the printer error is cleared. Resume the print job manually.
- The error message is not automatically deleted even if the printer error is cleared. After the print job is resumed, the printer status is confirmed and updated.

7. Notes and other information

7.1 Notes

- 1) Capacity of hard disk drive for spool files
Make sure that the hard disk capacity is sufficient for spool files. The capacity required varies depending on the printer and the number of prints. When the disk lacks free space for spool files, an image may not be printed properly. In general, a folder storing spool files is saved in a same hard disk drive with the printer driver.
- 2) Printer operation
For details on the printer operation, refer to the instruction manual of the ASK-300 printer.
Do not turn off the printer during data transfer or printing.
If the printer is accidentally turned off, restart of the computer may be required.
(When deletion of the printing data fails, restart the computer.)
- 3) Applicable range of color adjustment
The color adjustment is applied to the entire printing area including the background.
- 4) Connecting the printer to the computer
Do not disconnect the interface cable during data transfer.
If the interface cable is accidentally disconnected, wait for a minute or more, and then reconnect it.
If the cable is reconnected immediately after it was disconnected, the printer driver may not operate properly.
- 5) System requirements for USB connection
Use a computer supporting USB operation.
The ASK-300 printer is compatible with USB 2.0 interface (Hi-speed USB).
USB 2.0 is fully compatible with USB 1.1; thus, the ASK-300 printer is connectable with a computer supporting USB 1.1 interface.
To perform printing in the USB 2.0 (Hi-Speed USB) specification, the computer must be compatible with USB 2.0 (Hi-Speed USB). For USB 2.0 (Hi-Speed USB) compatibility of your computer, contact the manufacturer of the computer.
- 6) Connecting the USB cable
After the printer driver is installed, wait for 10 seconds or more to reconnect the once-disconnected USB cable. If the USB cable is reconnected immediately after it was disconnected, the printer may not operate properly.
- 7) Print job
Do not delete print jobs in the spooler during data transfer. If they are accidentally deleted, do not restart printing until the printer returns to default.
- 8) Number of copies
Depending on the application, printing may not be performed according to the number of copies set in the printer driver.
Set the number of copies from the application's print dialog box.

- 9) Error occurred during printing
If the error message is not displayed on the computer for some reason even though an error occurred during printing, check the front indicator of the printer to take countermeasures. For error messages and countermeasures indicated on the front indicator, refer to the instruction manual of the ASK-300 printer.
- 10) If an error occurred when a print job is held by clicking "Hold" and then resumed by clicking "Resume" in the Print Queue window, the error message may not be displayed in the computer, and may only appear on the front indicator of the printer. In such a case, click "Hold" again and resolve the problem. After the error message on the printer disappears, resume printing.
- 11) Adding a printer directly to the Print & FAX window
To install the printer driver, follow the procedure described to automatically recognize the printer. If you register the printer with the [Add] button, printing may not be performed properly.
- 12) When the printer is turned off or the USB cable is not connected, the printer may turn into the standby mode. It, however, does not affect later printing operations.
- 13) When paper size: 6x4 inchx2 (152x102mmx2) is selected,
a. If odd numbers of copies are printed or the page ends with an odd number, the last copy or page is blank. In some applications, a blank page is inserted after every page.
b. When odd numbers of copies/pages/images are printed, if a print job is deleted or held in the Print Queue window while an error occurs, the last blank page may be output.
- 14) When the printer is communicating with the computer while an error occurs, if [Pause Printer], [Resume Printer] or [Delete] is clicked in the Print Queue window, the communication may fail, resulting in the deleted print job to be output.
- 15) After the size mismatch error (Error No. 14) occurred, printing may not start immediately even if you transfer the next job when you delete the job of error in the Print Queue window without resolving the error.
In such a case, connect the USB cable again. The error message will disappear.
In addition, printing will start later for a while if you do not connect the USB cable again. In this case, in Mac OS X 10.8, the error message may not be updated.
In such a case, delete the ASK-300 printer from the Printers list box on the Print & FAX window, and then add the printer to the list again. The error message will disappear.
- 16) Even if the paper size "6 x 4 inch (152 x 102mm)" or "6 x 4 inch x 2 (152 x 102mm x 2)" is selected on the Page Setup dialog box, the paper size may not change to "6 x 4 inch (152 x 102mm)" or "6 x 4 inch x 2 (152 x 102mm x 2)".
If this happens, select a different paper size (such as "6 x 8 inch (152 x 203mm)") and then select the desired paper size ("6 x 4 inch (152 x 102mm)" or "6 x 4 inch x 2 (152 x 102mm x 2)").
- 17) Supply levels display
The information may not be obtained correctly when printing, when in the computer sleep mode, or when an error is occurring in the printer.
While the printer is turned off, the previously acquired information is displayed.
To obtain the latest information, display the supply levels dialog again.

7.2 Print color adjustment tips

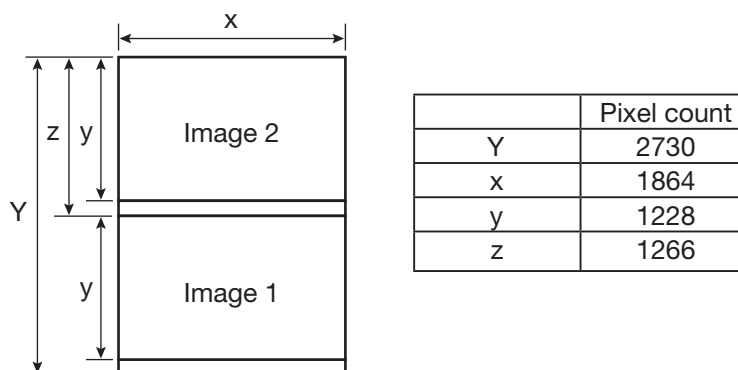
7.2.1 Adjusting the print color tones as you like

(The adjustments are not reflected to an image on the monitor.)

- 1) To make the entire image look darker
Set a smaller value in "Brightness" of "Printer Features" on the Print window.
- 2) To sharpen the image contrast
Set a larger value in "Contrast" of "Printer Features" on the Print window.
The image contrast becomes sharper.
- 3) To add a color hue
Change the value in "Brightness" of "Printer Features" on the Print window.
To add a red hue: Sets a larger value in Brightness R.
To add a green hue: Sets a larger value in Brightness G.
To add a blue hue: Sets a larger value in Brightness B.

7.2.2 Printing images on the print size: "6x4 inchx2 (152x102mmx2)"

To print images on the print size: "6x4 inchx2 (152x102mmx2)," arrange the images as shown below.



7.3 Prohibited matter

Reverse engineering or reverse compiling of this driver software is prohibited.

7.4 Exemption from responsibility

This driver software may not operate properly in some operating environments. Fujifilm Corporation will not assume any responsibility for damage (including, but not limited to, lost profit or damage caused from special circumstances etc.) occurring during the use of this software.

7.5 End User Software License Agreement

Development company reserves all the intellectual property rights to this Software for ASK-300 (“Software”) and its associated operation manual (“Operation Manual”).

Fujifilm grants user (“User”) a limited non-exclusive license and right under this Agreement (“Agreement”) to use this Software.

User may not reverse engineer, de-compile, or disassemble this Software, except and only to the extent that such activities are expressly permitted by this Agreement and any applicable law.

Unauthorized reproduction, copying, sale, import, export, use, or leasing of either this Software or its Operation Manual by User, in whole or in part, is strictly prohibited by this Agreement and Copyright Law.

Software specifications, Software design, and the contents of this Operation Manual are subject to change without notice to User.

Fujifilm and development company assume no responsibility or liability for privacy violation or copyright infringement or any intellectual property violation by User incurred from print of image data by the User during the use of this Software.

Fujifilm and development company assume no responsibility or liability to User for damages or demands of any kind incurred during use of this Software.



FUJIFILM Corporation

7-3, Akasaka 9-chome, Minato-ku, Tokyo 107-0052, Japan