

You've never  
printed like  
this before.™

- Real INSTAX prints
- Print together in Fun Mode
- Print from video
- Motion control



**instax mini Link®**  
Smartphone Printer

# instax mini Link<sup>®</sup>



DUSKY PINK



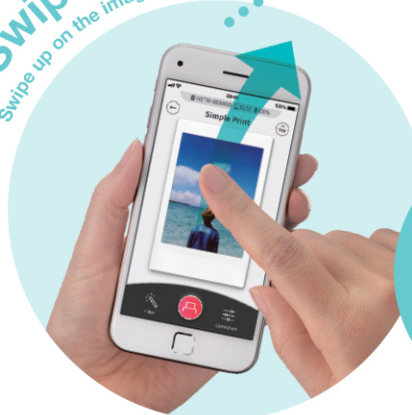
ASH WHITE



DARK DENIM



Swipe UP! /  
Swipe up on the image to print.




Using the downloaded, free INSTAX MINI LINK App, swipe up on the image that you would like to print and the photo will eject from the INSTAX MINI LINK printer.

Simulated Images.



## App features

### Video Print



Print your favorite frame from a video. Sometimes the best photos are action shots!

### INSTAX Camera



To get your best shot using the INSTAX MINI LINK App, tilt the printer to zoom in and out and then press the power button to take a photo.

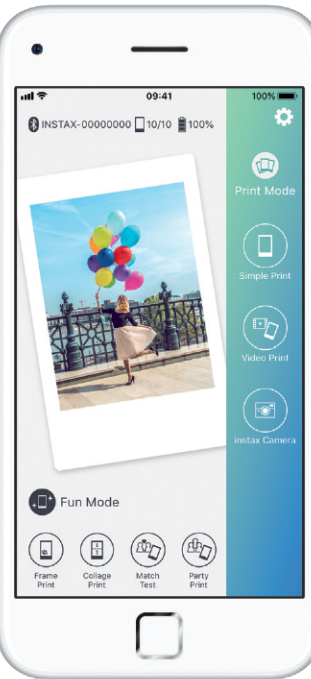
### Simple Print



Easily edit and print photos from your Smartphone.


Print photos and videos easily from your Smartphone!


Print with friends for even more fun!



Vertical

INSTAX LED light turns blue when in Print Mode





Horizontal

INSTAX LED light turns orange when in Fun Mode

Flip the printer vertically or horizontally to change the App mode.

### High speed, continuous printing


The photo prints in **just 12 seconds** after the image is sent from your Smartphone. **Approximately 100 photos** can be printed continuously (when fully charged\*).

\*Varies depending on usage conditions.

### Reprint


Turn the printer upside down and press the power button to reprint your last INSTAX photo!

\*Note that the last photo printed is automatically erased when the printer is turned off.



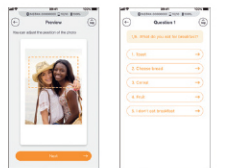
### Sketch, edit & print

Import your sketches and handwritten text, then add them to your photos and print! This fun new feature is sure to spark your creativity.




### Match Test

This mode is guaranteed fun! Simply take a photo and select the **'take the test'** function, or challenge yourself to a quiz in the **'leave it to fate'** function.



### Party Print

Connect with up to five friends to create a unique instax print! Turn on **Surprise Mode** to keep the final image a secret until it develops.



### Frame Print

Choose from **lots of fun frame designs** to add to your photo!



### Collage Print

Choose from **14 collage styles**, or **split** your photo across more than one instax print.

Collage Print



Split Print



\*Images are for illustrative purposes only.

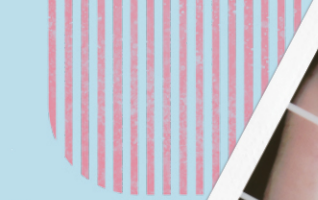




HAPPY BIRTHDAY

HELLO

Love



# SPECIFICATIONS

Recording method	3-color exposure with OLED
Film used	FUJIFILM INSTAX Mini Instant Film (sold separately)
Final photo size	86 mm x 54 mm / 3.38 in. x 2.13 in.
Image size	62 mm x 46 mm / 2.44 in. x 1.81 in.
Supported image size	800 x 600 dots
Printing resolution	12.5 dots/mm (318 dpi, 80 µm dot pitch)
Printing levels	256 levels per color (RGB)
Interface	Standard compliance: Bluetooth Ver. 4.2 (BLE)
Supported image format	JPEG, PNG, HEIF
Printing time	Photo Upload and output: approx. 12 seconds
Approximate printing capacity	Approximately 100 prints (Number of prints depends on the usage conditions).
Power supply	Lithium ion battery (internal type: not removable)
Charging time	Approximately 80 to 120 minutes (Charging time depends on the temperature and battery remaining level)
Power consumption	Approximately 3 W
Operating environment	Temperature: +5 °C to +40 °C (+41 °F to +104 °F) Humidity: 20% to 80% (no condensation)
Main unit dimensions	90.3 mm x 34.6 mm x 124.5 mm / 3.5 in. x 1.3 in. x 4.9 in.
Main unit mass	Approximately 209 g/7.3 oz (excluding INSTAX Mini film pack)
Supplied accessory	USB cable

- \*The INSTAX prints depicted are simulated images.
- \*Specifications above are subject to change for improvement.
- \*The Bluetooth® wordmark and logos are registered trademarks owned by Bluetooth SIG, Inc.
- \*The text QR code is a registered trademark and wordmark of Denso Wave Incorporated.
- \*The image size may affect the sharpness of the finished print.
- \*File size and Smartphone type may affect download time to the INSTAX MINI LINK device.
- \*Smartphone type and shooting conditions may affect finished print color tone and quality.
- \*Finished print quality may vary from Smartphone image display.



INSTAX MINI LINK  
special website

**FUJIFILM**  
FUJIFILM Corporation

FUJIFILM, VALUE FROM INNOVATION, INSTAX, INSTAX MINI LINK and YOU'VE NEVER PRINTED LIKE THIS BEFORE are trademarks and registered trademarks of FUJIFILM Corporation and its affiliates. © 2020 FUJIFILM North America Corporation. All rights reserved. Ref. No. INSTAXMINILINK

**instaxus.com**

SAP Material Code	Description	Unit UPC Code	Unit Dims.	Unit Weight	Case UPC Code	Case Dims	Case Weight	Min Order Qty
16640773	INSTAX LINK ASH WHITE EX D US	074101041057	4.13" x 2" x 6.88" (LxWxH)	0.62 lbs	10074101041054	10.63" x 8.86" x 7.48" (LxWxH)	6.83 lbs	10
16640759	INSTAX LINK DARK DENIM EX D US	074101041040	4.13" x 2" x 6.88" (LxWxH)	0.62 lbs	10074101041047	10.63" x 8.86" x 7.48" (LxWxH)	6.83 lbs	10
16640761	INSTAX LINK DUSKY PINK EX D US	074101041064	4.13" x 2" x 6.88" (LxWxH)	0.62 lbs	10074101041061	10.63" x 8.86" x 7.48" (LxWxH)	6.83 lbs	10

Supported Application (download of the free INSTAX MINI LINK App required)



INSTAX MINI LINK

Apple and the Apple logo are trademarks of Apple Inc., registered in the U.S. and other countries. App Store is a service mark of Apple Inc.

Google Play and the Google Play logo are trademarks of Google LLC.

SUPPORTED FILM

**instax® mini**

Instant film

INSTAX Mini Twin Pack  
(20 exposures) depicted.



INSTAX Mini Instant film comes in a wide range of stylish film border designs!

Easily print images taken with your FUJIFILM X Series digital camera\* with the INSTAX MINI LINK.

For more information, please visit the INSTAX MINI LINK dedicated site.

\*All X Series cameras that are compatible with the FUJIFILM Camera Remote App are supported. Camera Remote App not available with FUJIFILM X-T10 or X-T20.

