

# DX100 Fine Art Matte Paper File Install

Before installing the Fine Art Matte Paper file, you must upgrade your DX100 Maintenance Tool to the latest version 3.0.4. You can download the latest driver from the FujiFilmUSA website. You will also find the fine art matte paper file. Please utilize the link below to keep up to date on the latest DX100 software.

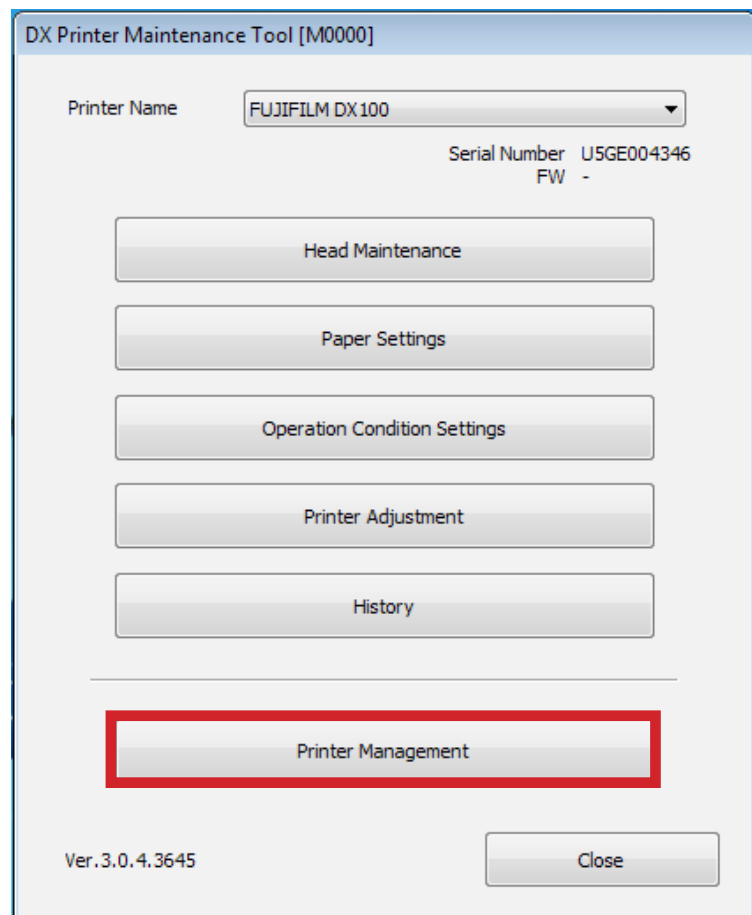
<http://www.fujifilmusa.com/support/ServiceSupportBrowse.do?prodcats=879854&sscucatid=664260>

It is important to know when you upgrade your printer it may perform a Firmware update. If all the lights on your printer turn on, it is extremely important that you do not interrupt this process doing so will render the printer inoperable. You must wait for all the lights to turn off and the printer initialization to complete. This will be indicated with a solid blue light above the power button.

Once you have downloaded the FAM paper file.

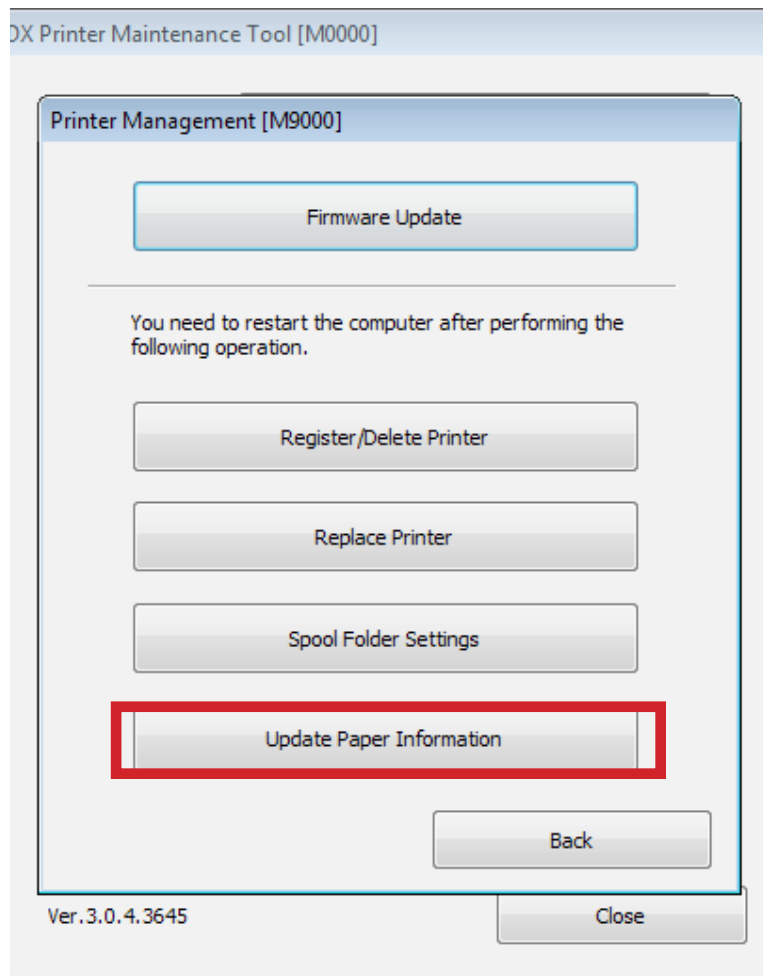
1  
Open the DX100 Printer Maintenance Tool.

Select Printer Management.



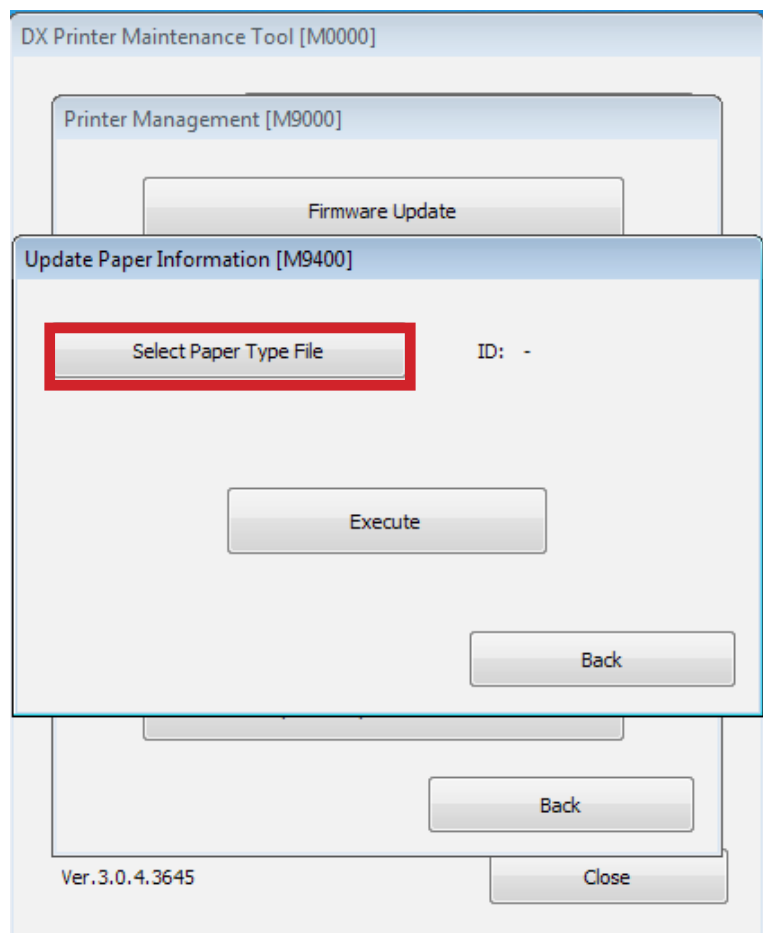
Select Update Paper Information.

2



Click Select Paper Type File

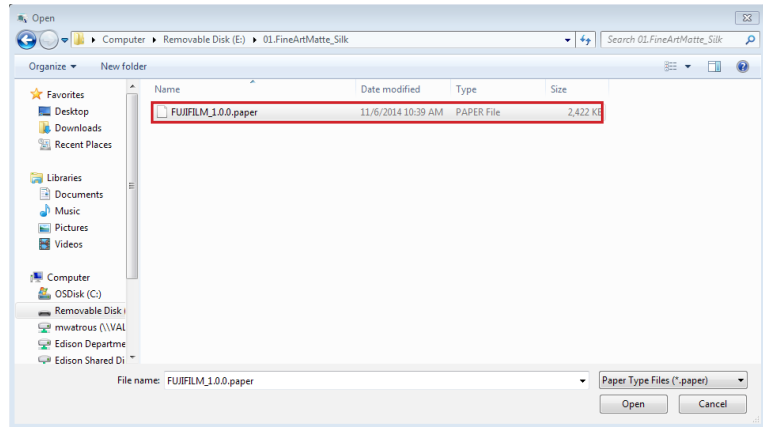
3



Browse to the file location of the FAM file you have downloaded.

Select the FUJIFILM\_1.0.0.paper then, click Open

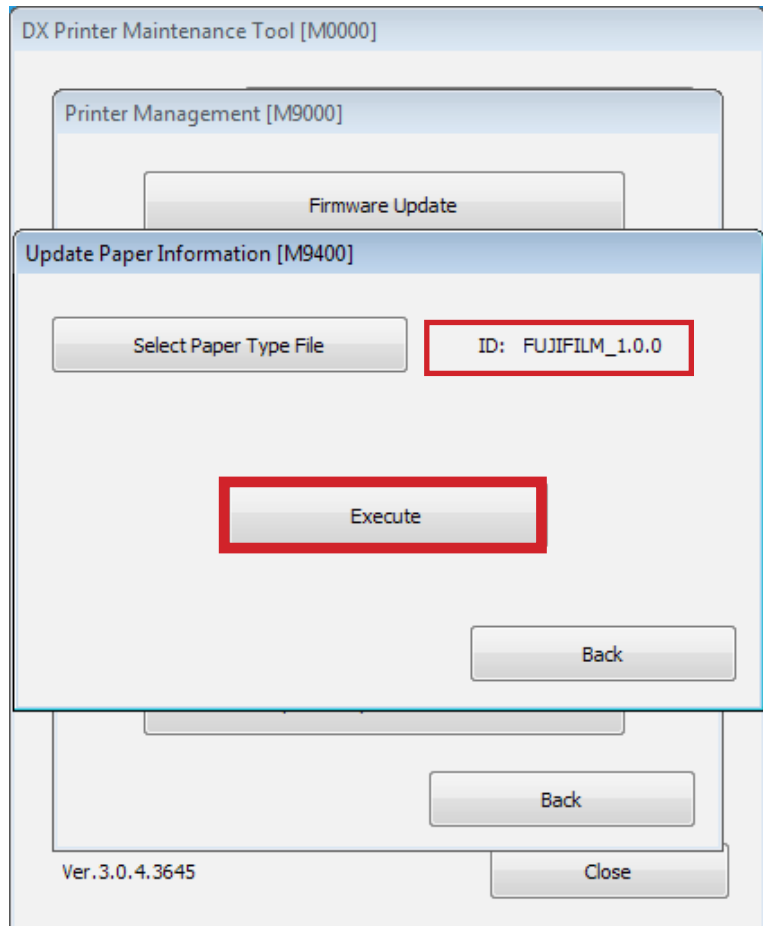
4



The paper file will be specified in the ID:

Click Execute.

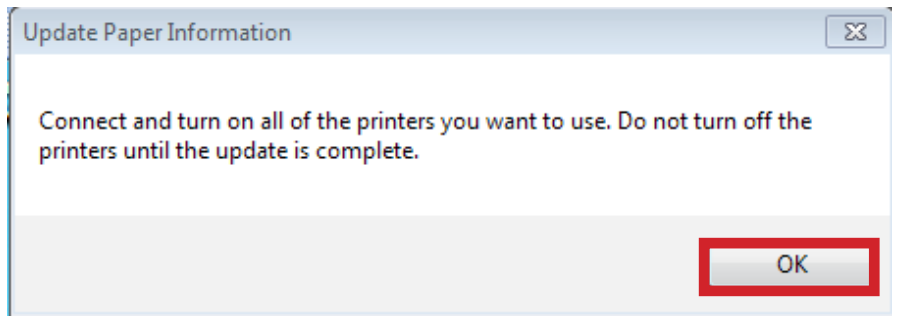
5



The following message will appear informing you to turn on all printer you wish to have the paper file installed on.

6

Click OK

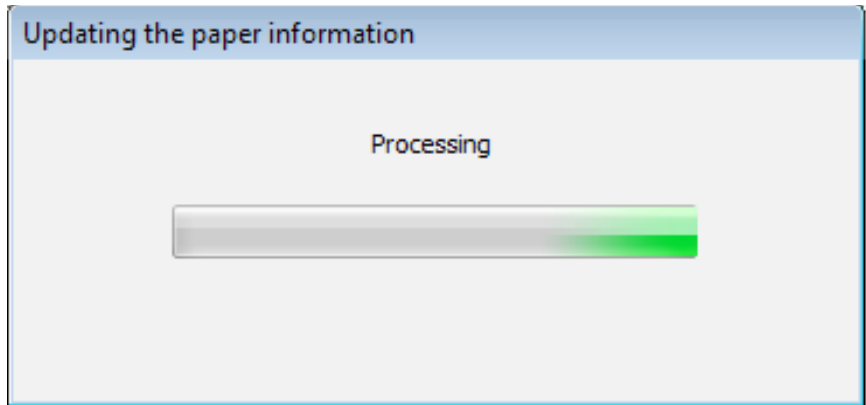


The progress will indicate installation process.

This will take a moment.

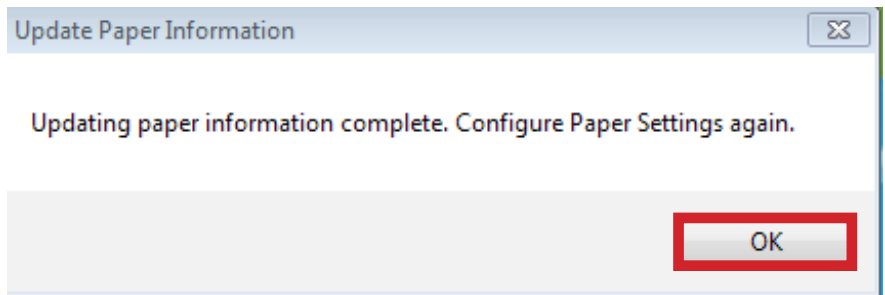
7

Note: You may hear the printer re-initialize



Click OK

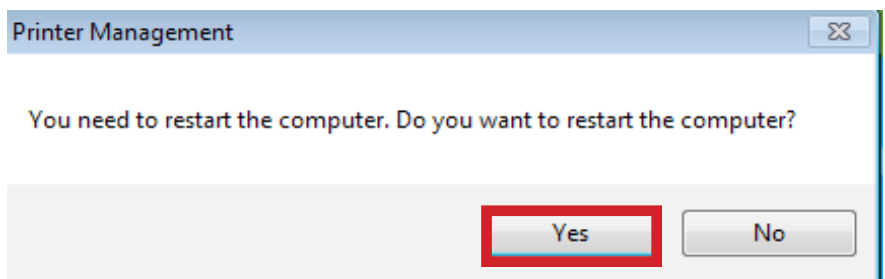
8



Click Yes

This will complete the installation after the PC is restarted.

9



For proper use the this paper file. Please refer to Fine Art Matte Paper profile setup instructions.