

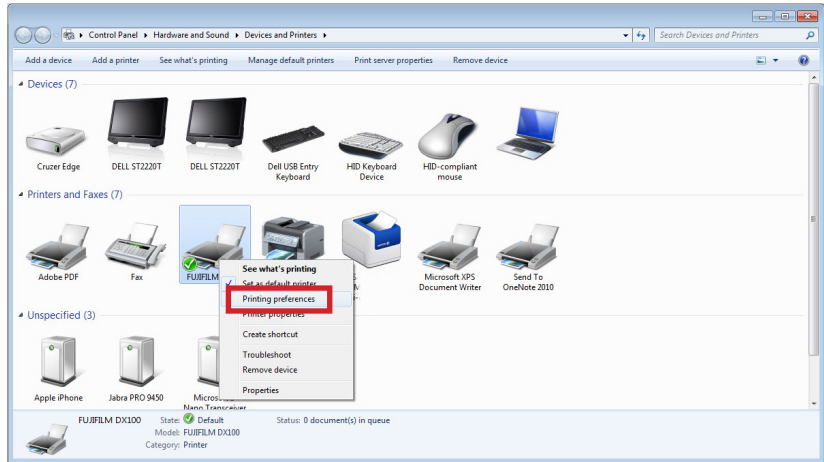
DX100 Fine Art Matte Paper Profile Setup

These instructions are intended to be used for printing to Fine Art Matte Paper using a print application using the Fine Art Matte Paper windows print driver. It is important to have the Fine Art Matte Paper file installed before beginning these instructions. Please refer to the Fine Art Matte Paper Install instructions. Below are the basic steps to setup the Fine Art Matte Paper profile. Do not setup this profile in the printing application your are utilizing. In your application, please select the option to where the “printer manages colors”.

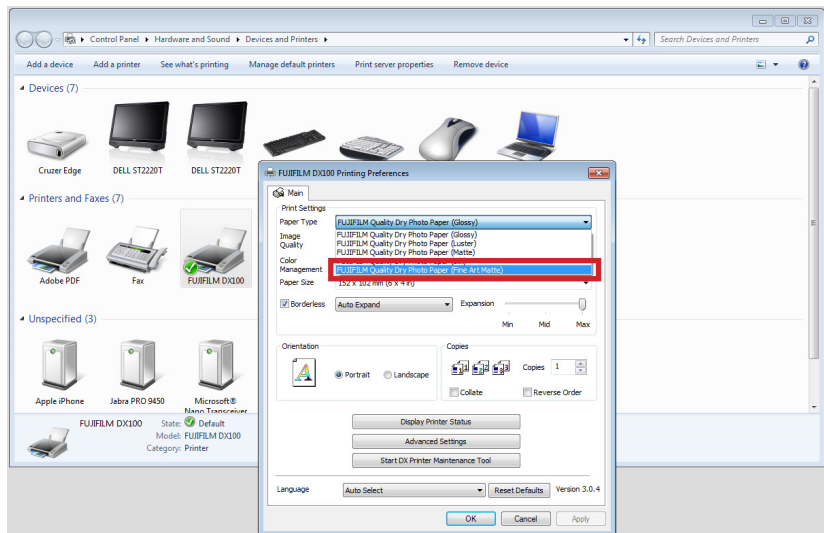
Start by opening devices and printers

Right click the DX100 Printer you wish to apply the profile to.

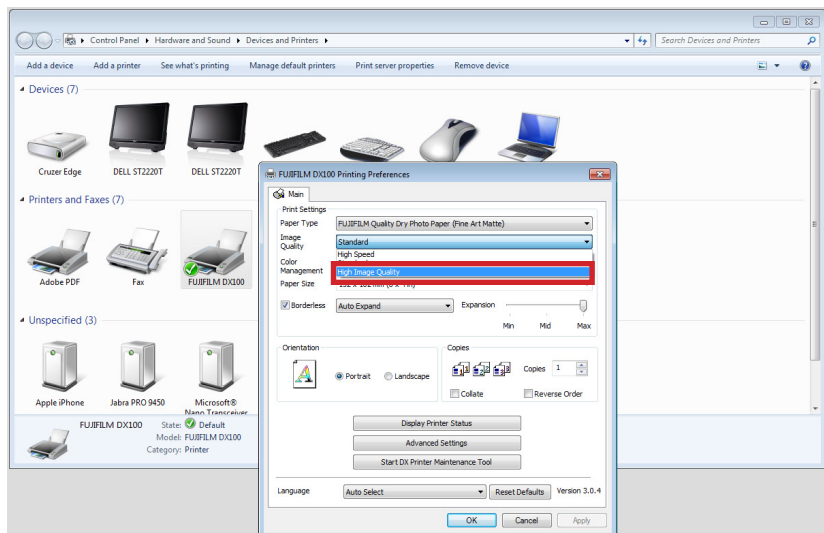
Select Printing Preferences.



From the Paper Type drop down, Select Fine Art Matte



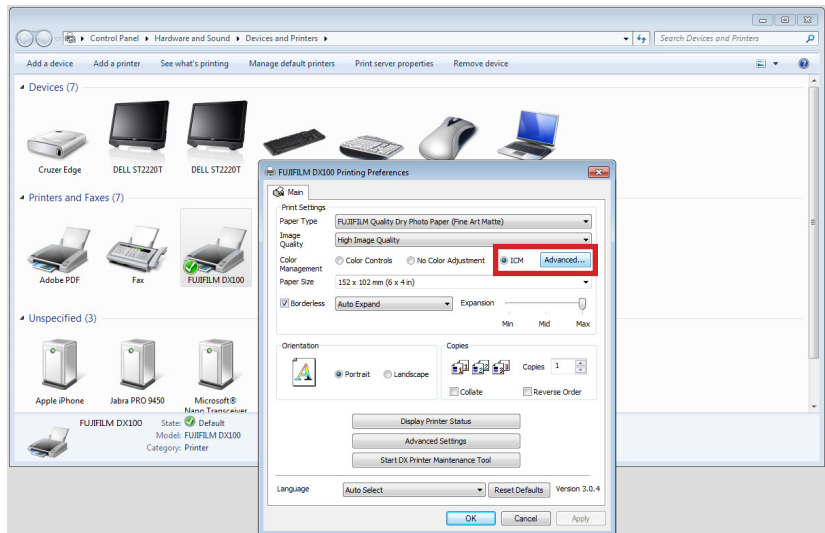
From the Image Quality drop down, Select High Image Quality



From the Color Management section.

Select the ICM Radio button. Then,
Click the Advanced button.

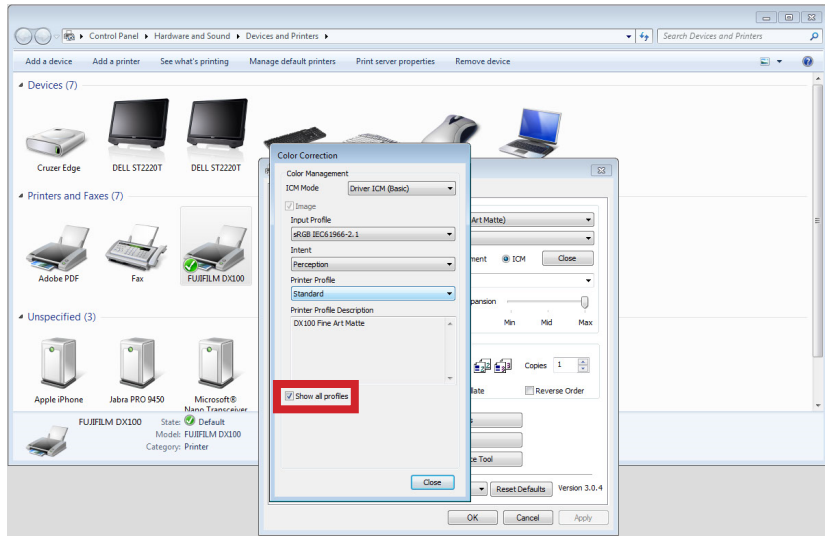
4



From the Color Correction screen.

Check the box Show all profiles.

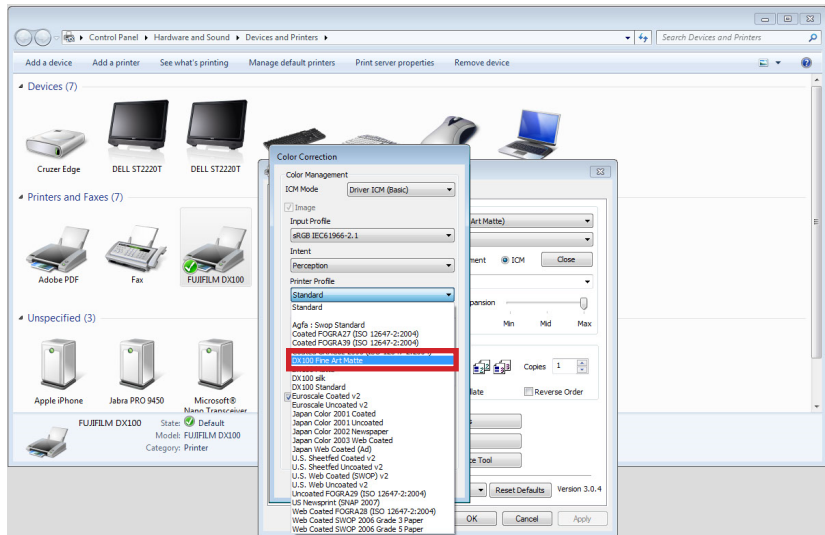
5



From the Printer Profile drop down

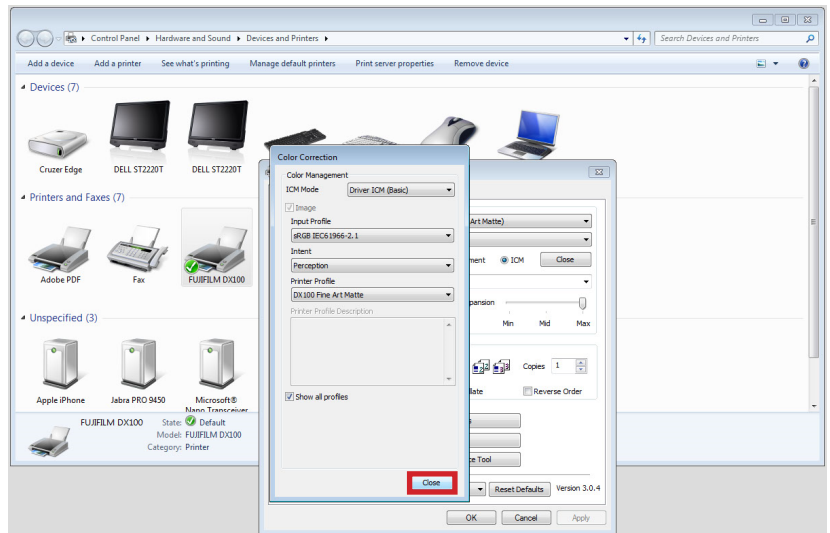
Select the DX100 Fine Art Matte
Profile.

6



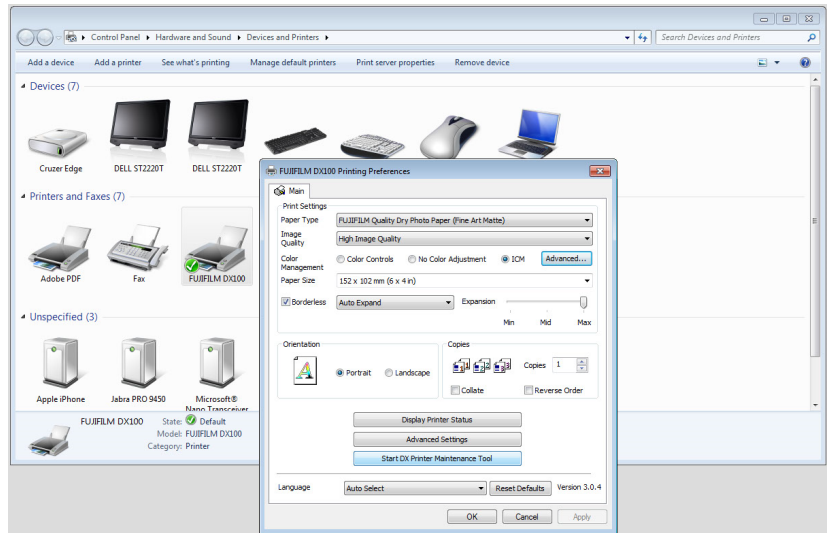
Click Close

7



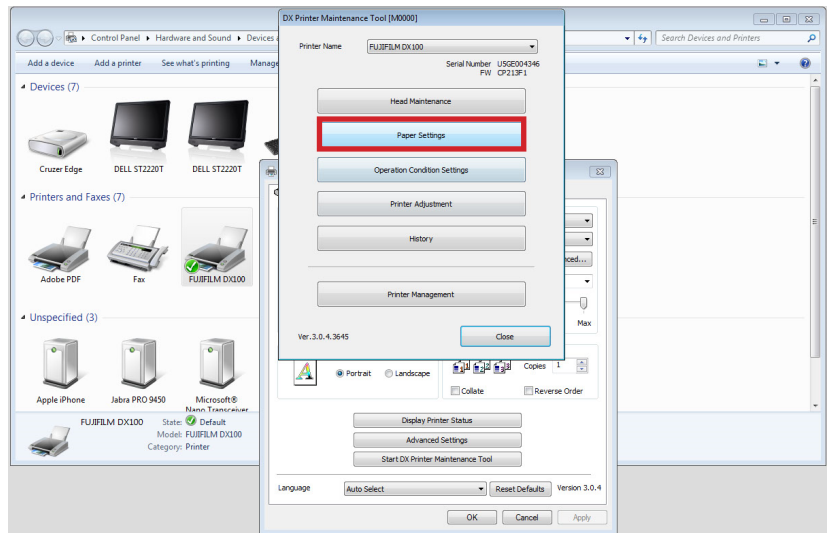
Click Start DX Printer Maintenance Tool.

8



Click Paper Settings.

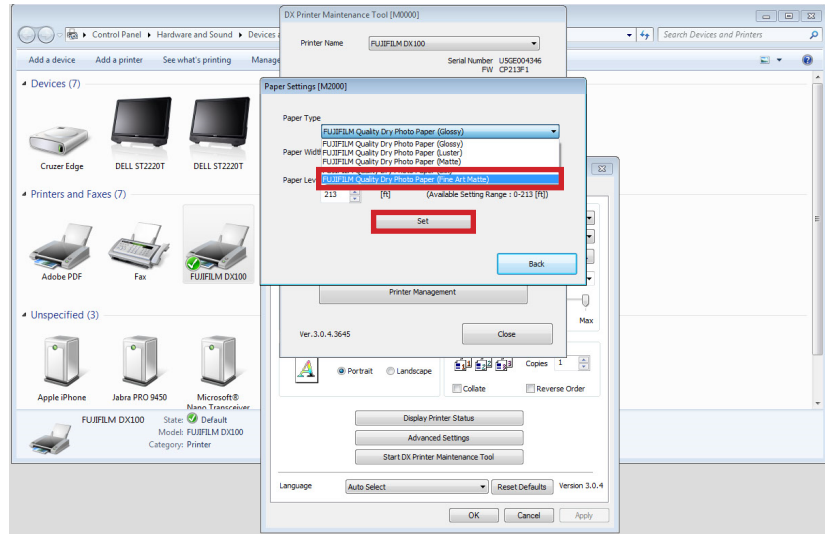
9



From the Paper Type drop down.

Select Fine Art Matte then, click Set.

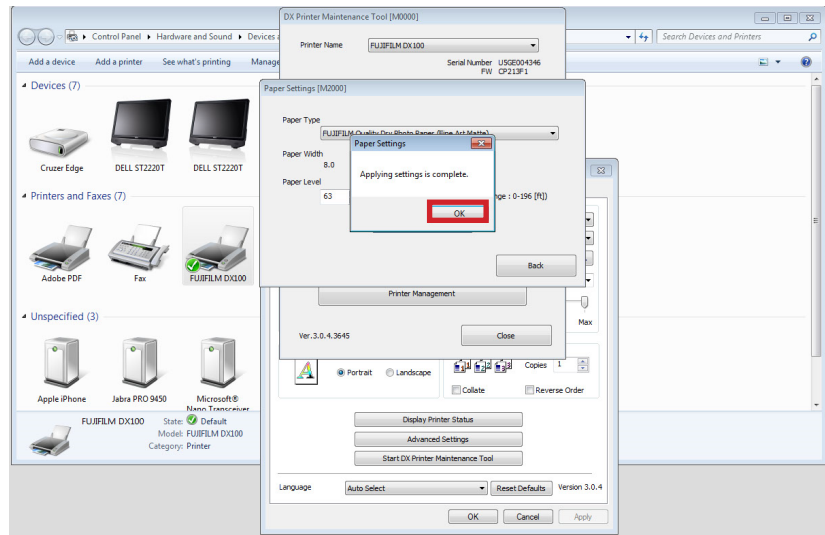
10



A Message appears stating the process is complete.

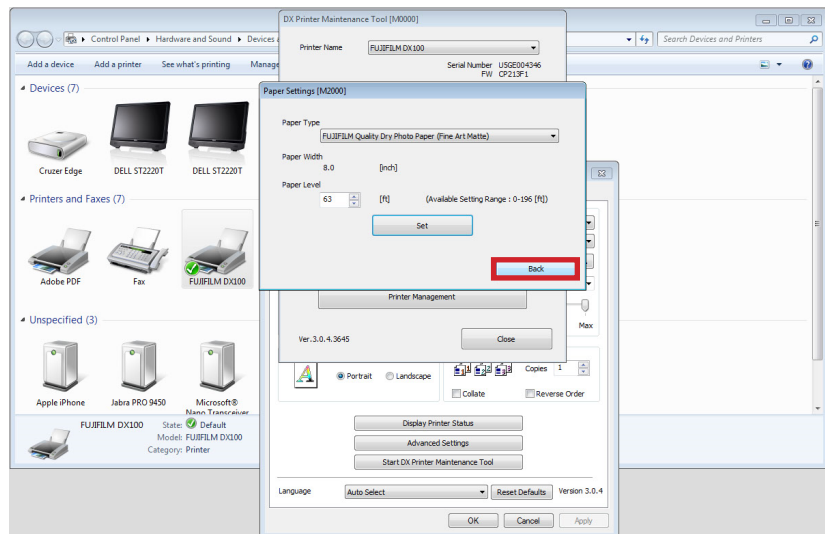
Click OK.

11



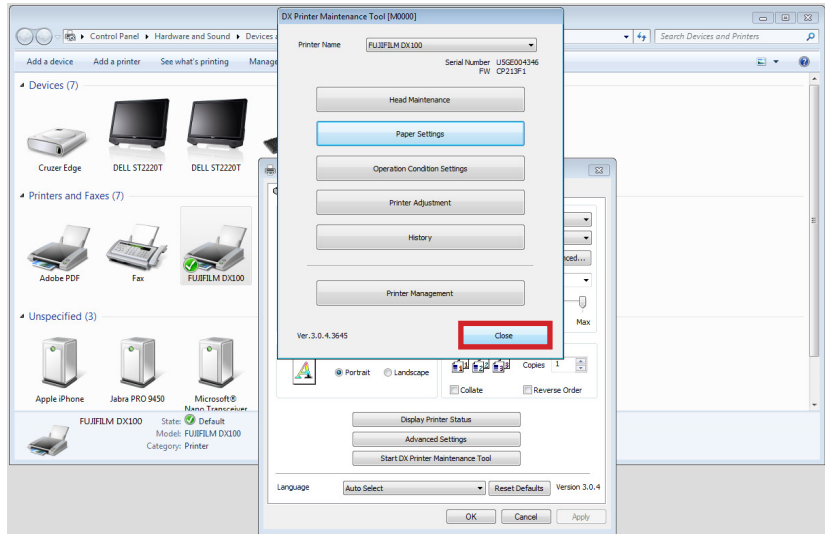
Click Back

12



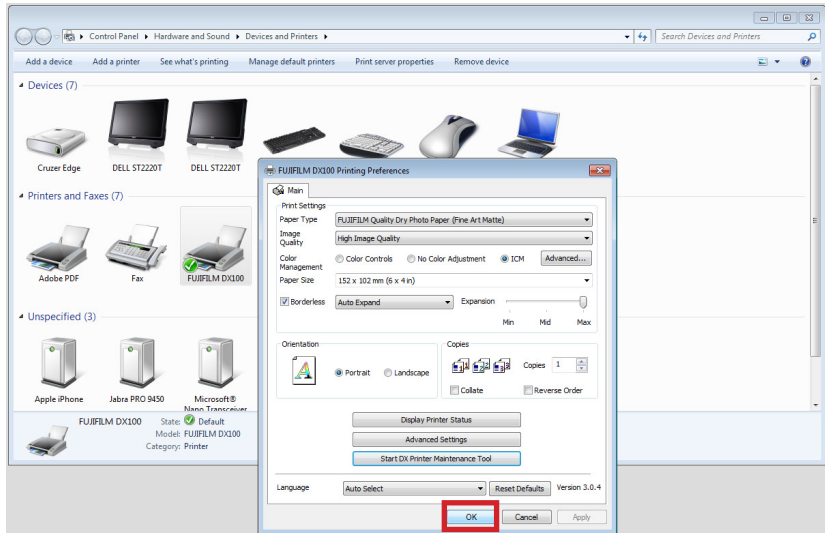
Click Close

13



Click OK

14



Should you have additional printer you wish to apply the settings to as well. Please repeat these instructions.

15

