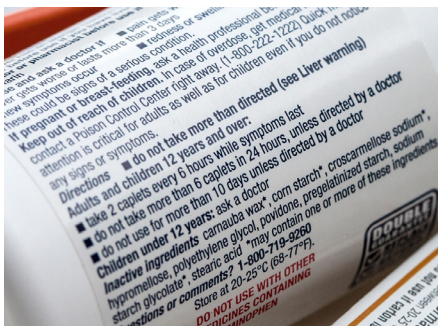
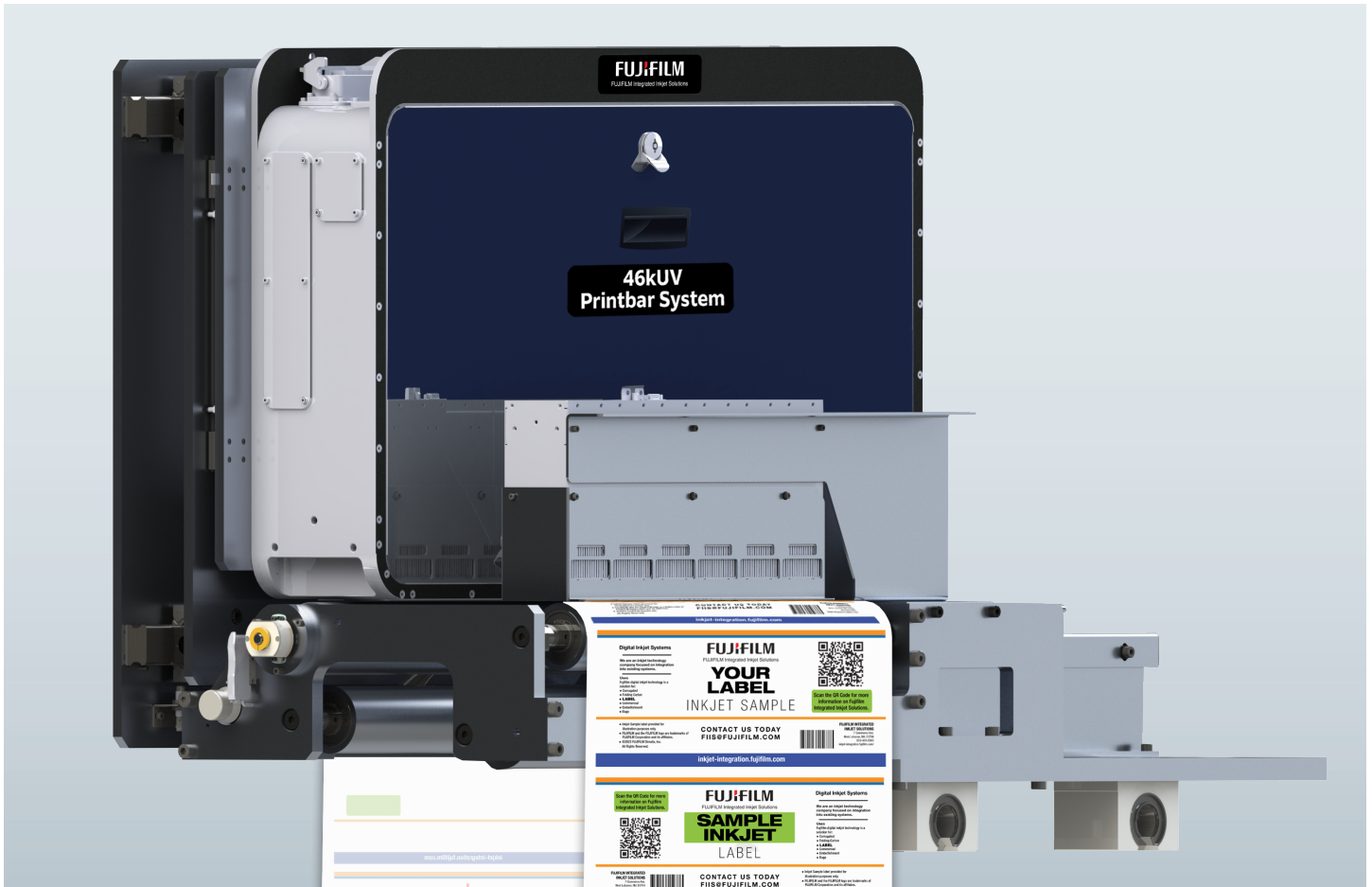


FUJIFILM 46kUV Printbar System

A Samba® Inkjet Imprinter for Labels & Packaging



500 feet per minute
(152 m/min) at 1200x600 dpi

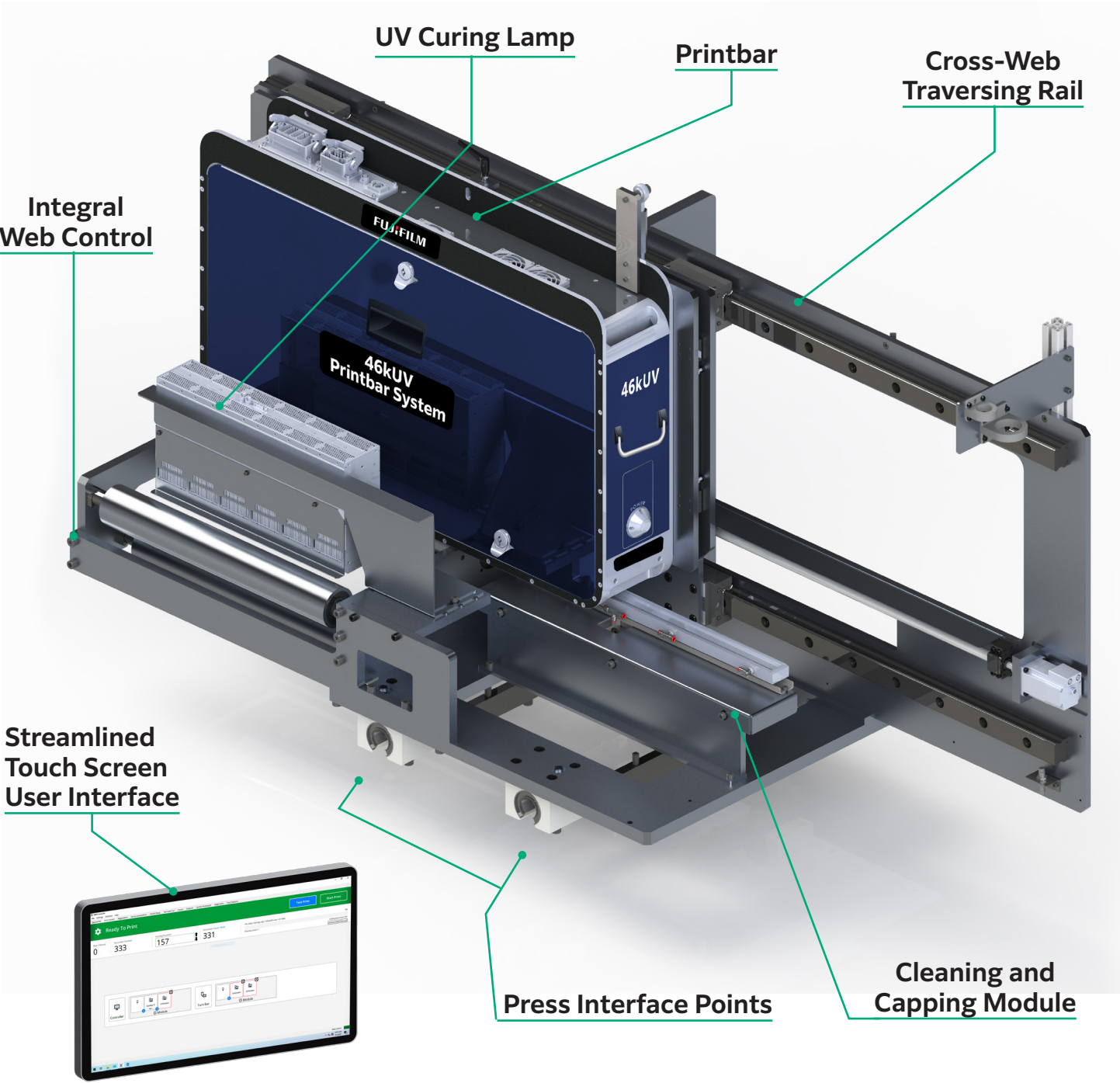


Single pass printing
for in-line production



UV curable inks for
labels and packaging

About the FUJIFILM 46kUV Inkjet Printbar



Technical Specifications

Parameter	FUJIFILM 46kUV Inkjet Printbar
Print Width	13 in [33.0 cm]
	17 in [43.1 cm]
	20 in [50.8 cm]
Print Speed & Resolution*	Cross process resolution 1,200 dpi
	305 FPM / 93 m/min (Resolution: 1200x1200 dpi)
	500 FPM / 152 m/min (Resolution: 1200x600 dpi)

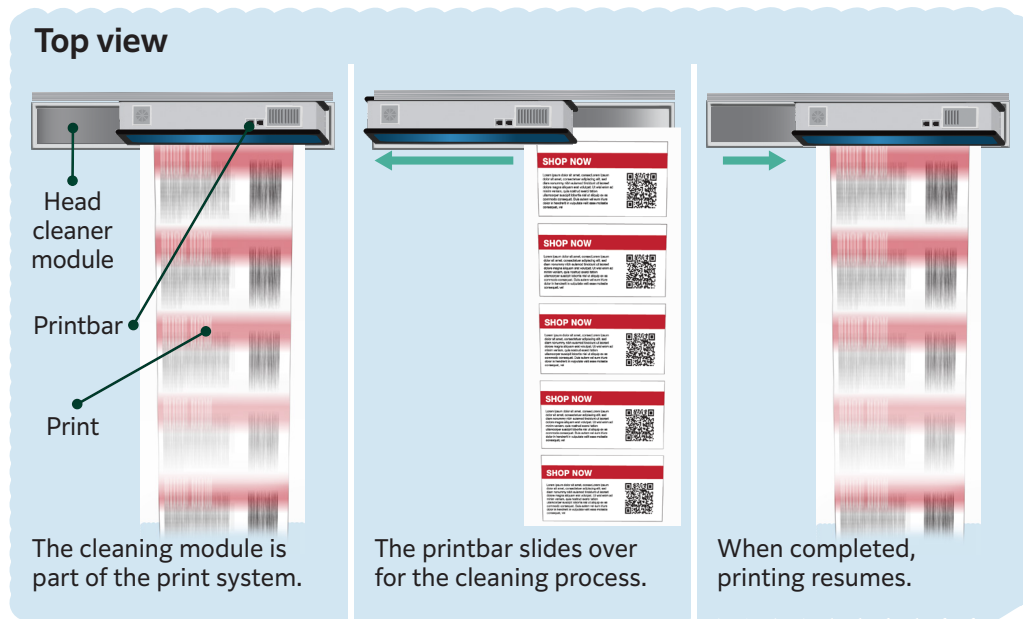
Parameter	FUJIFILM 46kUV Inkjet Printbar
Fluid	UV inks
Color & Quality	Monochrome
	Drop size 4 ng
	Smallest font 2pt (4pt knockout)
Print Controller	Yes
Interfaces	Windows® 10 and Print Engine Control Software (PECS)

Key features

The FUJIFILM 46kUV Inkjet Printbar features FUJIFILM technology, including the Samba® printhead, which leverages the accuracy and precision of Silicon MEMS (Si-MEMS) processing with the reliability and life of sputtered PZT in an ingenious parallelogram shape to deliver breathtaking image quality. The system also includes:

Cleaning and capping module

The cleaning and capping module keeps the printheads clean and functioning.



The cleaning/capping module is specially designed with precision engineered components to help maintain optimal image quality throughout the life of the 46kUV product. The module is typically run once per shift, and at the touch of a button, cleans the printhead nozzle plate to address issues arising from misdirected or lost nozzles.

Variable-Data Print File Creation with 3IC from Fujifilm

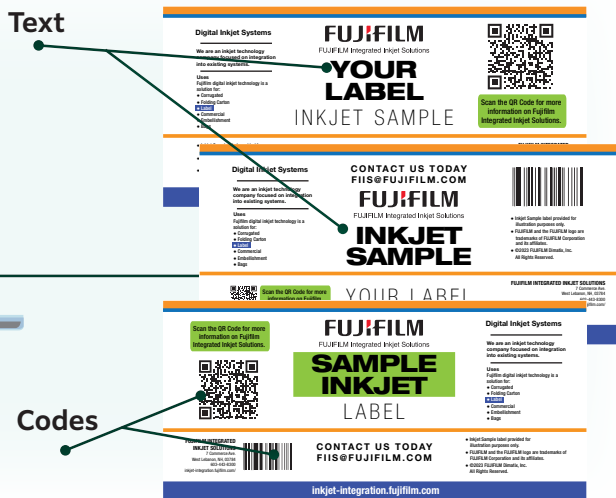
3IC is a lightweight, variable-data print composition application that comes as an option. It is designed for simplicity and ease-of-use when small jobs need to be set up quickly. 3IC runs on the print controller for convenient access.

Database

XPLYZ7N3
YOUR LABEL
XMFG3J2R
4X75PKQM
INKJET SAMPLE
BFHVUECQ
75UKJHFL
EY9H46CF
4W6RLPY5
SAMPLE INKJET
PQSK1WIT
OFEYDSAU
K78DHQCW
LFEAKMYX



Variable Data Elements



Worldwide reach

FUJIFILM Integrated Inkjet Solutions provides global support to its customers. Our customers benefit from fully-integrated, reliable print systems built to industrial standards. This includes production-ready print systems fully integrated into the production process.



Global resources

With office locations in every major geographic region, Fujifilm can bring you the latest technology quickly and be there to help at any time. Some of our company locations include:

- FUJIFILM Australia
- FUJIFILM Canada
- FUJIFILM Mexico
- FUJIFILM Unigraphica
- FUJIFILM North America
- *Offices in every major European country*

FUJIFILM



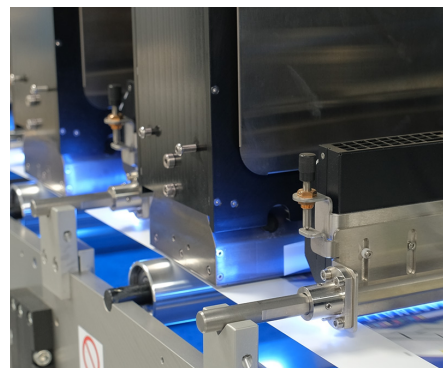
Contact:

Phone: 603-443-8300
Email: FIIS@fujifilm.com
Online: <https://inkjet-integration.fujifilm.com/>

Reliability and Quality

The FUJIFILM 46kUV Inkjet Printbar has an automated printhead cleaning and capping system that makes it easy to maintain optimal print performance. Coupled with the REDIJET® patented ink recirculation system, and the long life provided by sputtered PZT on the Samba® printhead, image quality remains optimal and consistent across the print width without the need for refurbishment.

The FUJIFILM 46kUV Inkjet Printbar adds variable data capability to conventional printing equipment.



Flexibility

The FUJIFILM 46kUV Inkjet Printbar is designed with print producers in mind to enable maximum benefit from your existing investments in analog presses and finishing. It is available in 13-, 17-, and 20-inch widths, and prints up to 500 feet per minute (152 m/min). Fujifilm's UV inks include Mercury UV cure, LED UV cure (365nm and 395nm), and IDFC compliant options which are compliant with Nestlé Packaging, Swiss Ordinance, and EuPIA regulations.



Scan here
to learn more
about our many
other integrated
inkjet printing
solutions.