



Installation Guide

Frontier-S DX100 printer with DarkRoom Pro Software Windows V4 Driver

Version 9.1.1978 Basic Driver
and
DarkRoom 9.20.2232 or higher for Advanced Driver integration

This page is
intentionally left
blank

Table of Contents

Introduction	4
• General System Information and Note on USB Port Installation	5
• System Topology	6
• Software, hardware and documents needed for this installation	7
Setting up the Frontier-S DX100 Printer	7
• Installing the DarkRoom Pro software on the Client PC	8
• Setting up the Frontier-S DX100 printer(s) on the DarkRoom PC	12
• Setup and use of DarkRoom Pro	23
• Appendix: Operation Notes; Color Management with Windows Driver and DarkRoom	26

Introduction

This guide will provide you with the necessary steps that need to be taken to install the Frontier-S DX100 with DarkRoom Pro software using Version 9.1.1978 and Version 9.2 and higher.

Please Note: To take full advantage of the Fujifilm DX100 V 4 Driver with DarkRoom Pro you must have DarkRoom Pro Version 9.2.2232 or higher. This will enable automatic set up of the “Fujifilm DX100 EX” printer.

Set up in Versions 9.1.1978 or lower can be accomplished by use of the Windows Driver Printer Set Up in DarkRoom Pro. In this basic option you will need to refer to your DX100 Operators Manual for creation of custom page sizes.

To take full advantage of advanced integration of DX100 it is necessary to upgrade to the latest version of DarkRoom Pro Version 9.2.2232 and higher uses direct drivers to communicate with the DX100 printer. Benefits from this upgrade are advanced set up options in the driver as well as automated page size selection and more efficient production.

Darkroom Pro software is to be installed on a client supplied PC (System PC) that meets the following specifications:

- Windows 7 Service Pack 1, 32 or 64 Bit
- Windows 10 Pro 32 or 64 Bit

It is important that DarkRoom Pro software is installed on a computer that has the ability to accommodate the workload of both software and the video graphics requirements of an imaging workstation.

The DX100 Printer(s) connect directly to the DarkRoom Pro Workstation/PC via USB cable(s). A total of up to *6 printers has been tested and is supported.

General System Information

Note on Printer USB Port Installation: The Frontier-S DX100 printer connects to DarkRoom Pro computer as USB connection one computer to multiple printers. Note location, port number and printer number when installing. If a printer is disconnected or replaced connect only to the port that the printer was originally installed on. When swapping or replacing a printer, refer to the DX100_Printer_Driver_Operation_Guide_EN.pdf Fourth Edition and use of Frontier-S DX100 Maintenance Tool for correct registration of the printer.

See Topology Illustration on Page 7.

Minimum requirements for the DarkRoom PC computer (Client PC) are that it will need to support the Operating System installed with RAM, (4Gb) Hard Drive Space (200 Gb). The system must be capable of handling advanced image processing applications.

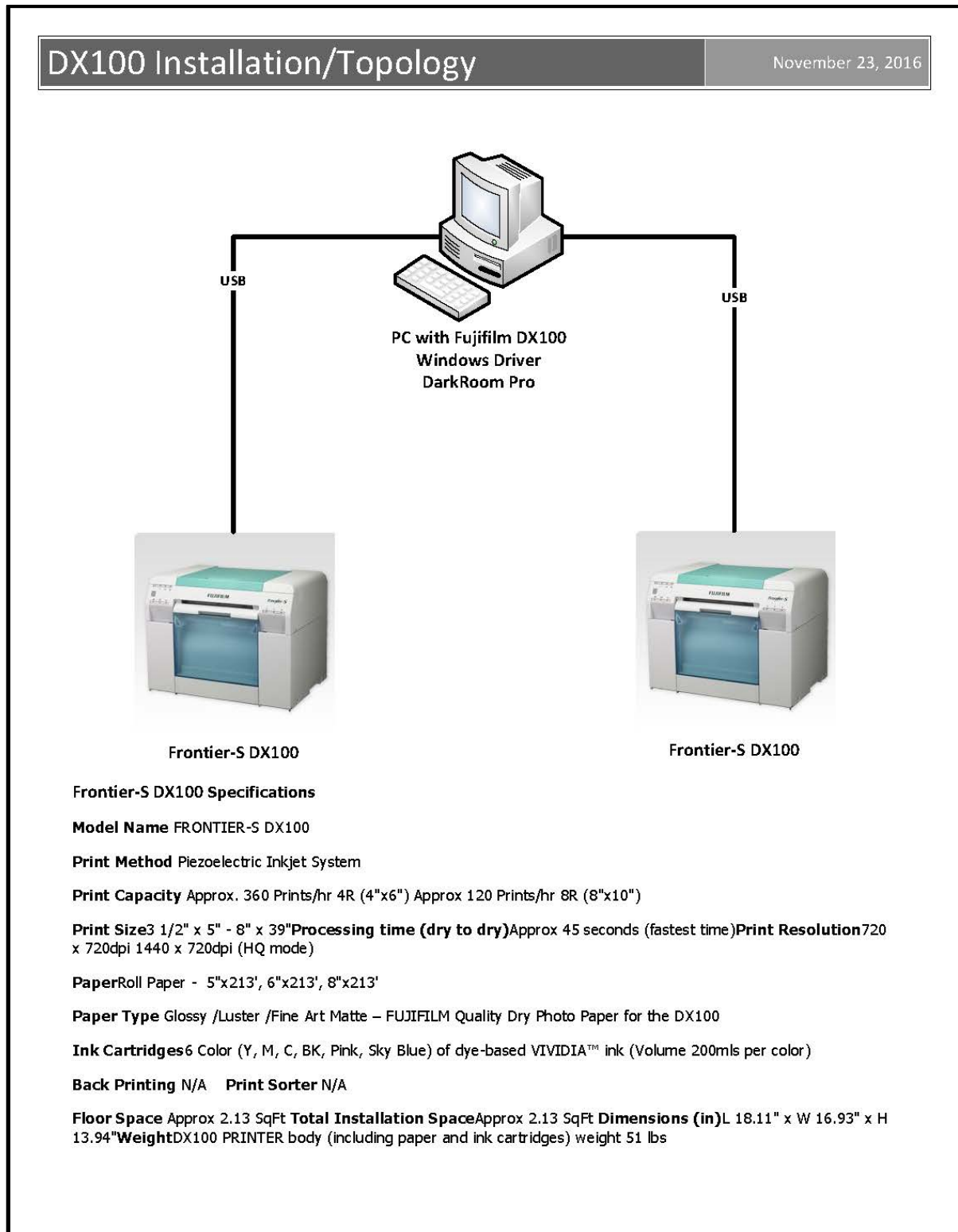
Operating Systems supported are Windows XP Pro with SP 3, OR Windows 7 Service Pack 1 , 32/64 Bit, Windows 10 Pro 32/64 Bit.

Before you proceed with the installation it is important that you review and understand the installation guide. Be familiar with the installation steps before beginning the installation.

System Topology

The illustration below shows a Host PC which meets minimum configurations outlined in the DX100 Installation Manual, **Frontier-S Printer Driver Operation Guide EN.pdf Fourth Edition**. DarkRoom Pro is installed on the Client PC. The DX100 Printer is connected to the Host PC via USB.

DX100 Connected via USB to the DarkRoom Pro Computer



Software, hardware and documents needed for this installation:

- Customer provided Computer which matches minimum specifications outlined in General Information.
- Fujifilm Frontier-S DX100 Printer(s)
- DarkRoom Pro software and License/USB Dongle, supplied by FUJIFILM NAC Marketing/Sales, or purchased directly from DarkRoom Software LLC
- DarkRoom Pro Installation Guide and Quick Start Guide, supplied with the DarkRoom software package
- DX100 Windows Driver Software v 4 or higher, supplied with the Printer
- Frontier-S Printer Driver Operation Guide EN.pdf Fourth Edition supplied with the Printer
- DarkRoom Pro installation Disk Version 9.10.1978, 9.2 or higher is preferred.

Setting up the DX100 Printer

Installation Preparation and unpacking the printer

Unpack and install the Frontier-S DX100 Printer as described in the Frontier-S DX100 Installation Manual supplied with the printer.

Printer Installation

Continue with the Printer installation of the Windows Driver following directions in DX100_Printer_Driver_Operation_Guide_EN.pdf Fourth Edition - Pages 4 through 5.

Installation and Settings: Frontier-S DX100 Printer Driver Operation Guide EN.pdf Fourth Edition pages 9 through 12

Review

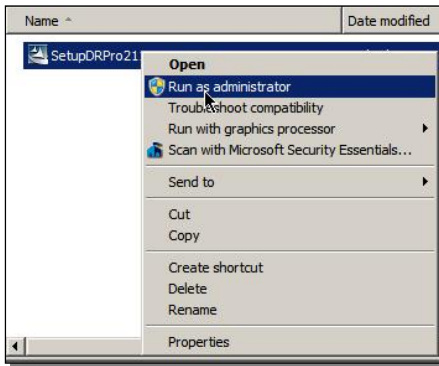
Review and follow the instructions for the use of the Frontier-S DX100 Printer Driver Operation Guide EN.pdf Fourth Edition Pages 12 through 50.

Installing DarkRoom Pro software on the System PC

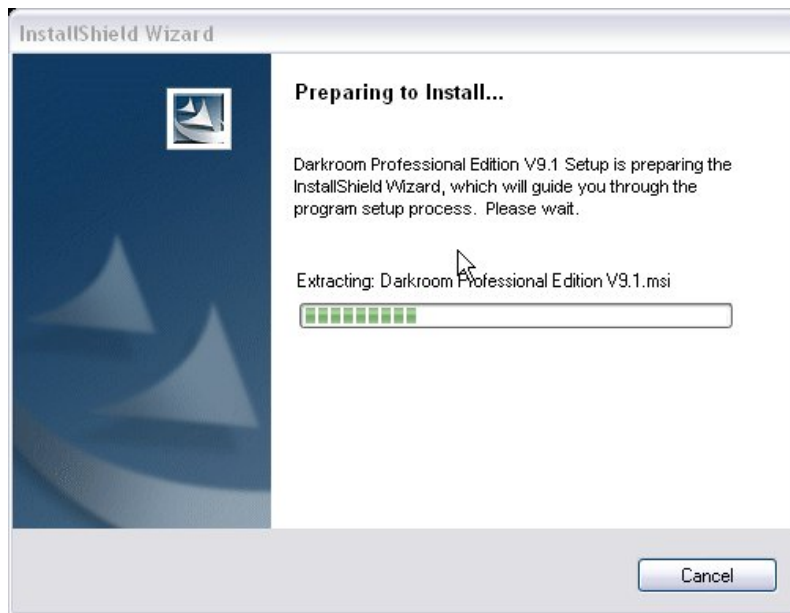
The Frontier-S DX100 S should be set up following instructions found in General Information and Frontier-S Printer Driver Operation Guide EN.pdf Fourth Edition

To Install DarkRoom Pro on your host computer:

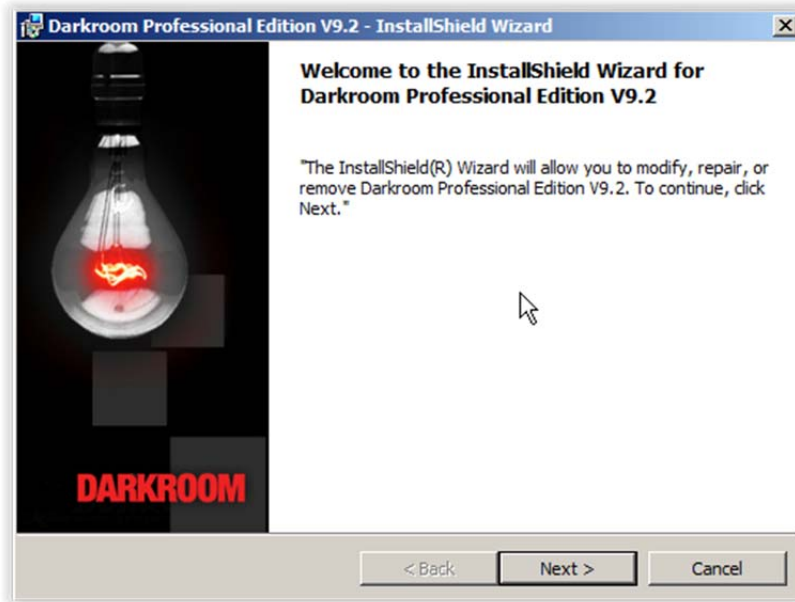
1. Insert the DarkRoom Pro installation disk into the DVD drive
2. If the Dvd does not automatically run
3. Click on Start > Run... > Browse..
4. Select SetupDRPROxxxx.exe
5. Click OK to run the installer



6. Click **OK**
7. The Install Shield Wizard will start



8. When the DarkRoom Professional installer starts, Click Next



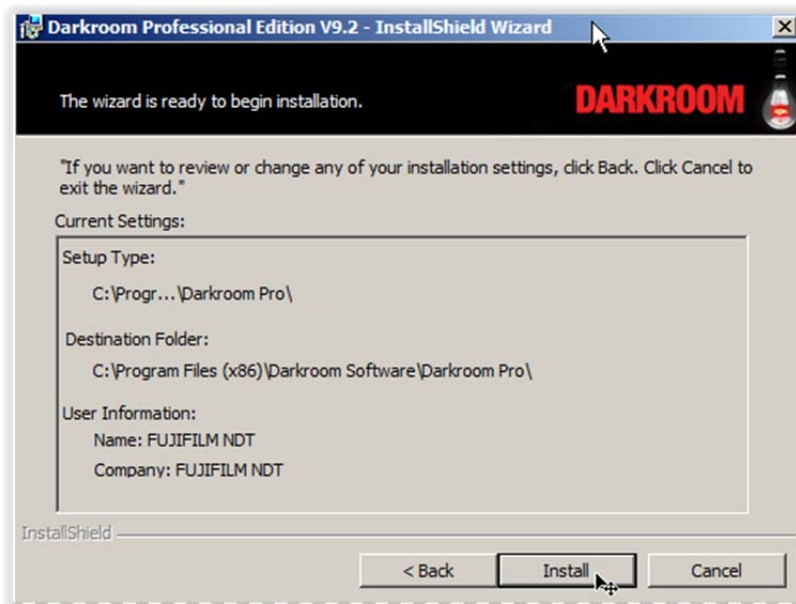
9. Select the Radio button to "Accept the terms in the license agreement" and Click Next



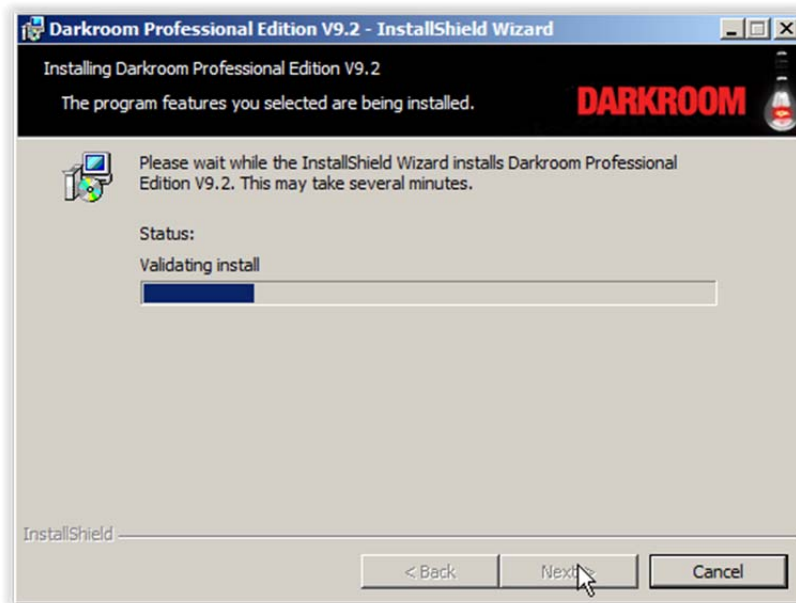
10. Click Next



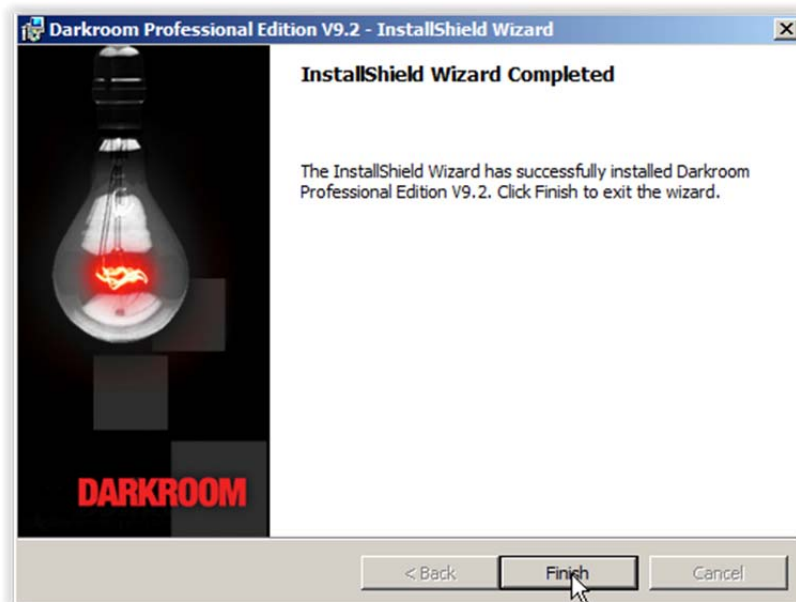
11. Click Install



12. The progress of the installation will be shown as in the illustration below.



13. Click Finish



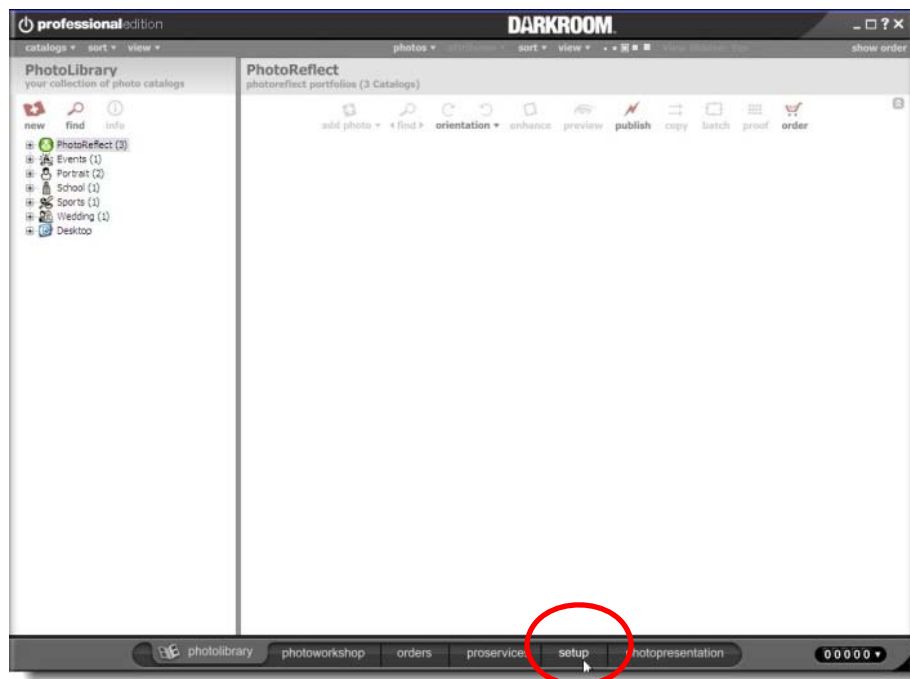
14. Remove the DVD from the drive, and reboot the system.

Setting up the DX100 printer(s) on the DarkRoom PC

1. Be sure that DX100 is connected to the computer USB, and properly registered to the Fujifilm DX100 Maintenance Menu. The printer should be on with Blue Power Light Button on solid. Insert DarkRoom USB Dongle in Client PC. Double Click on DarkRoom Icon on your desktop. If you are setting up multiple printers, set up one printer at a time including Configuration of Printer Settings.
2. Click Start



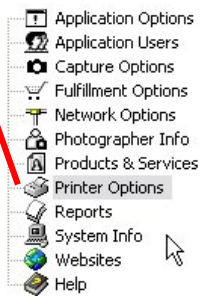
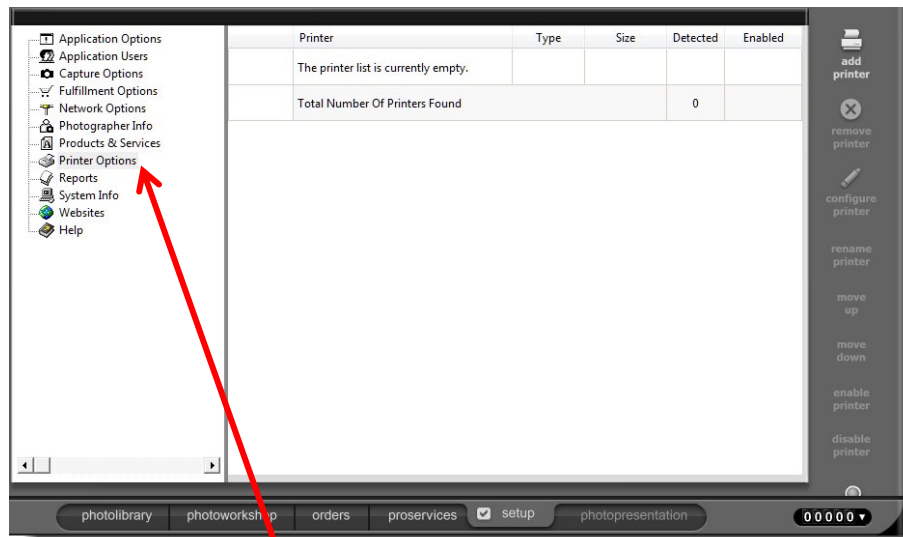
3. DarkRoom software will launch.



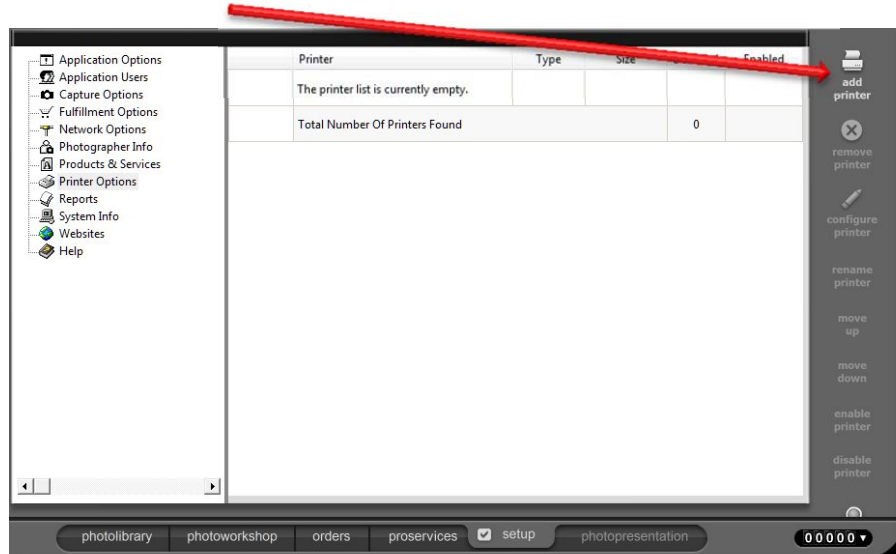
4. In the lower Tabs of the DarkRoom UI Select the Setup Tab.



5. From the Set Up Tab Click on "Printer Options"



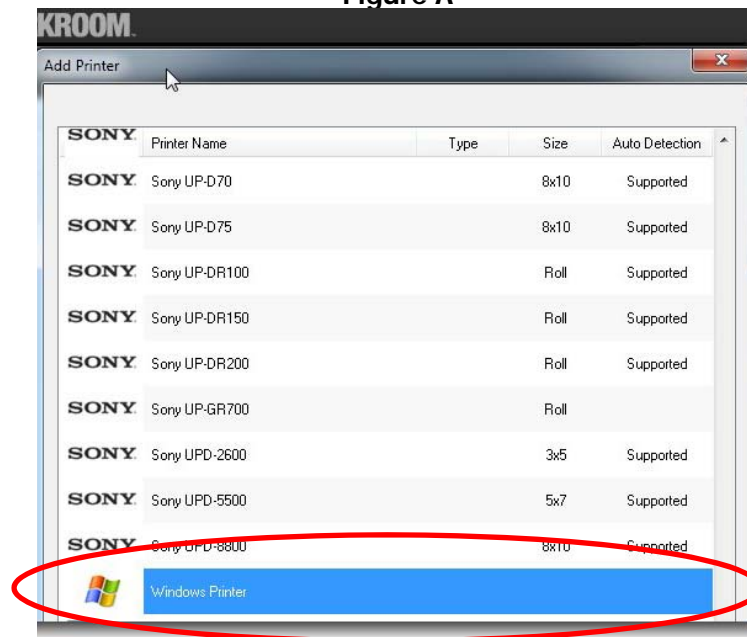
6. Click on "add printer"



7. Select the FUJIFILM DX100 and Select "Add Printer".

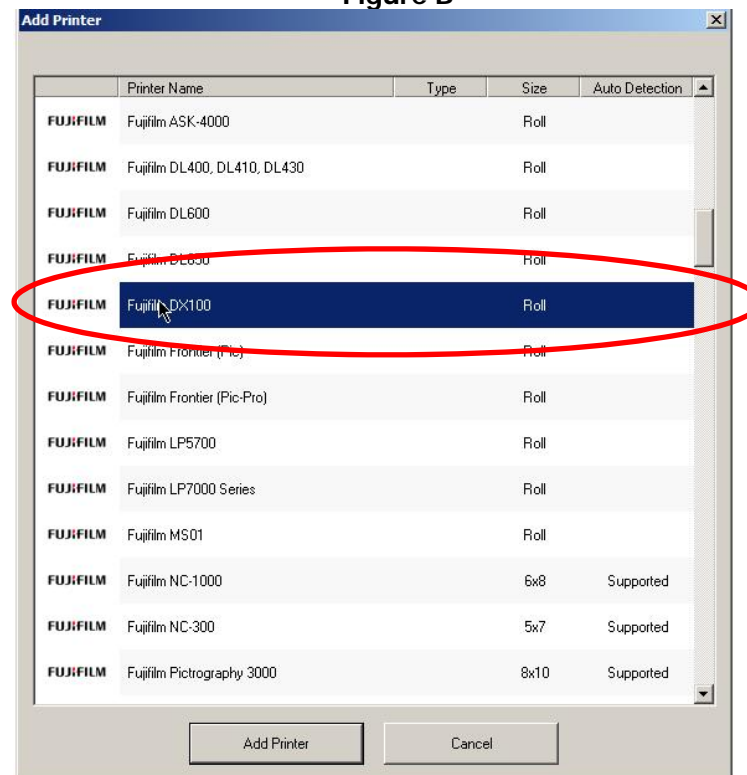
IF- your version of DarkRoom Pro is V 9.10.1978 select Windows Driver as in Figure A.

Figure A

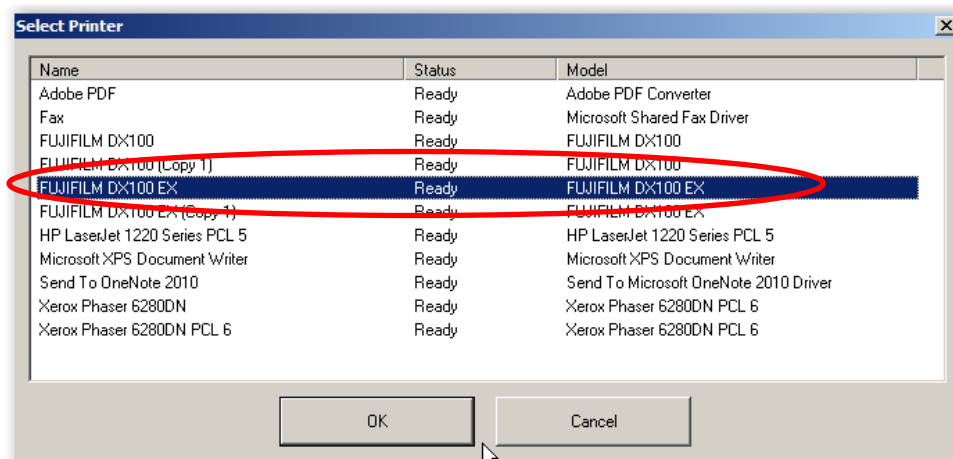


IF- your version DarkRoom Pro is V 9.20.2232 or higher Select Fujifilm DX100 as in Figure B.

Figure B

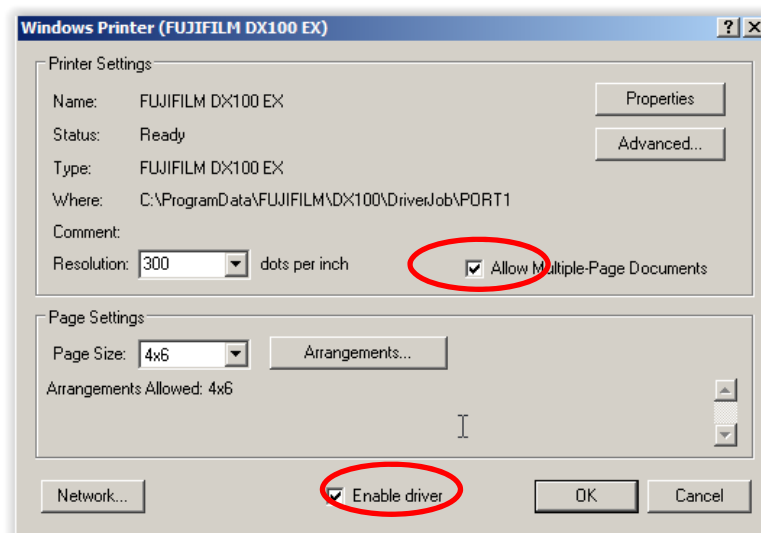


8. The Printer Setup dialog box will appear with printer(s) found connected to the computer. Select the **Fujifilm DX100 EX** printer and Click "OK".

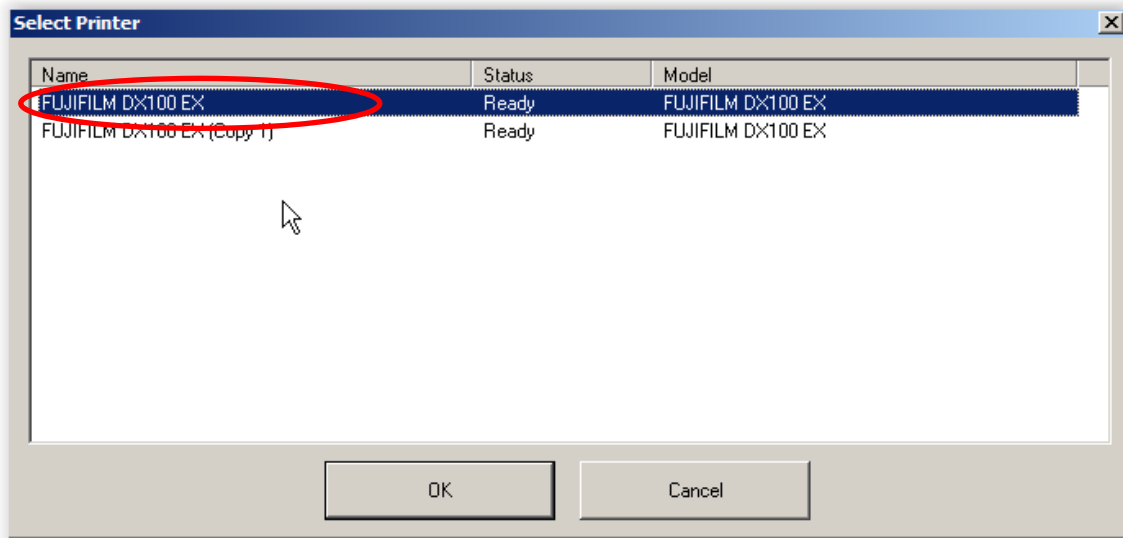


9. In the DarkRoom DX100 Set Up Dialog Box Check the boxes for "Enable Driver" and Allow printer to be used offline".

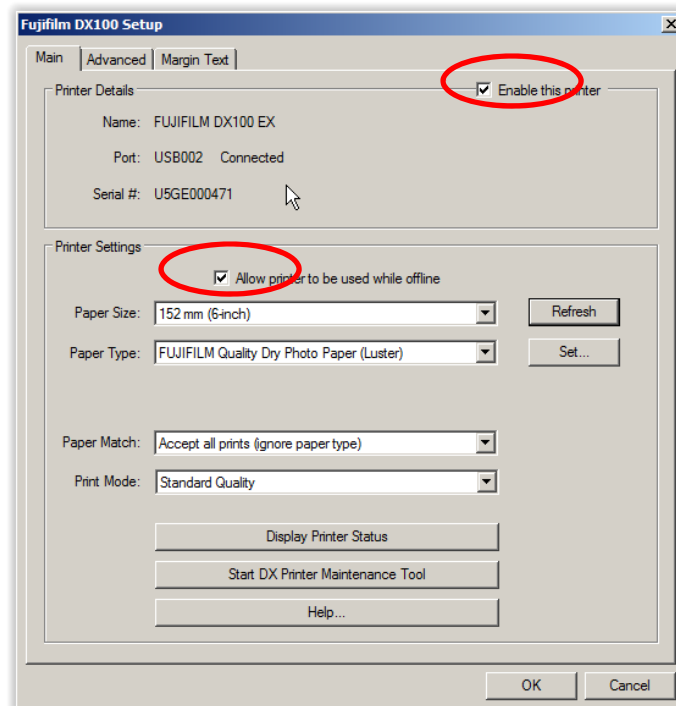
Windows Printer Set Up DarkRoom Pro V 9.10.1978
In this Set Up Select "Allow Multi Page Documents"



10. DX100 Printer Set Up DarkRoom Pro V 9.20.2233 or higher
Select **Fujifilm DX100 EX Printer** and Click OK.

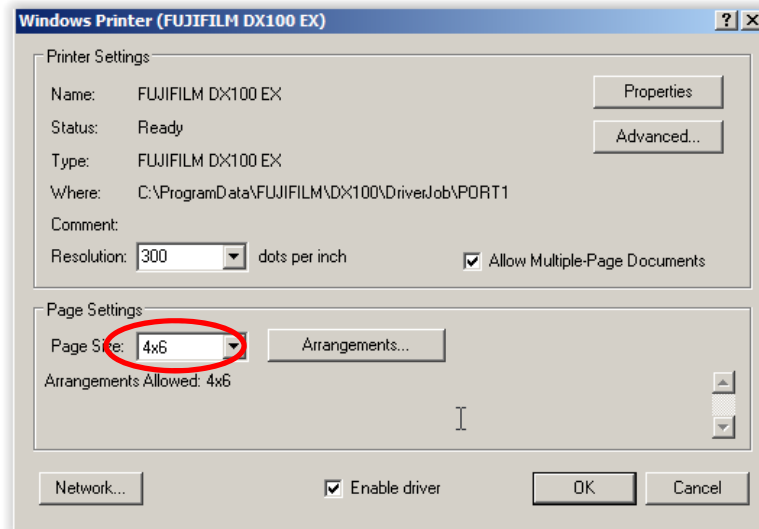


Check Boxes Enable Driver and Allow printer to be used offline.

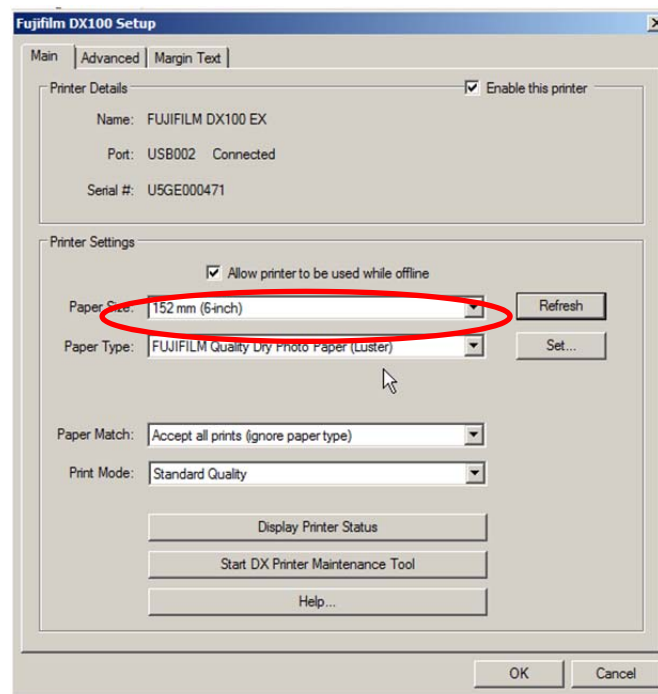


11. Make sure that the proper paper size has been selected in the Paper Size box.

Windows Printer Set Up DarkRoom Pro V 9.10.1978

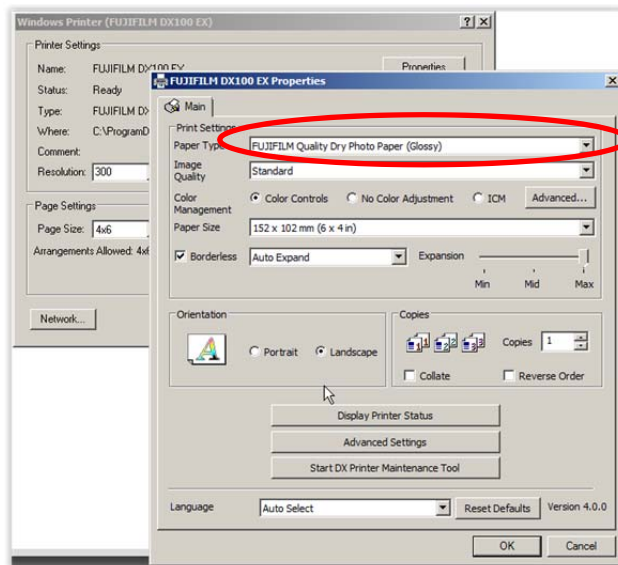


DX100 Printer Set Up DarkRoom Pro V 9.20.2232- Make sure that the proper paper size has been selected in the Paper Size box.

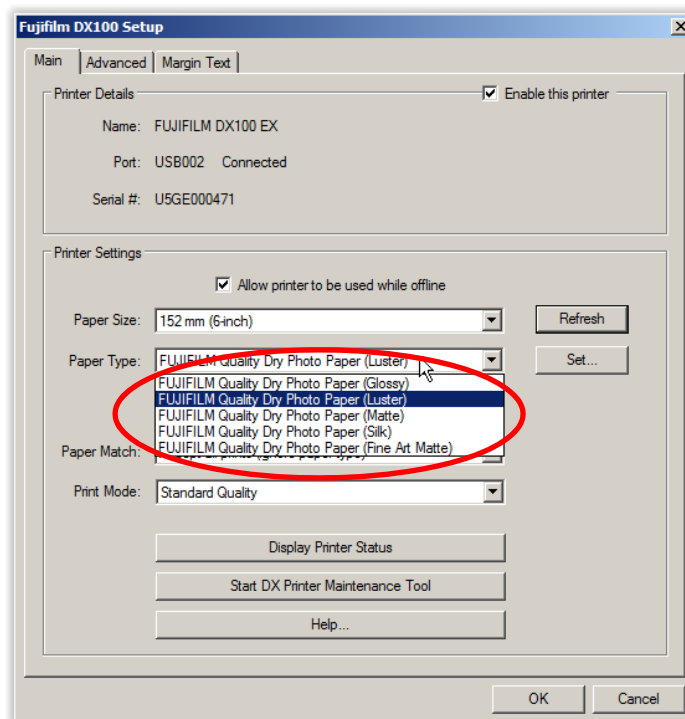


12. Next be sure to select the proper paper surface has been selected in the Paper Type box.

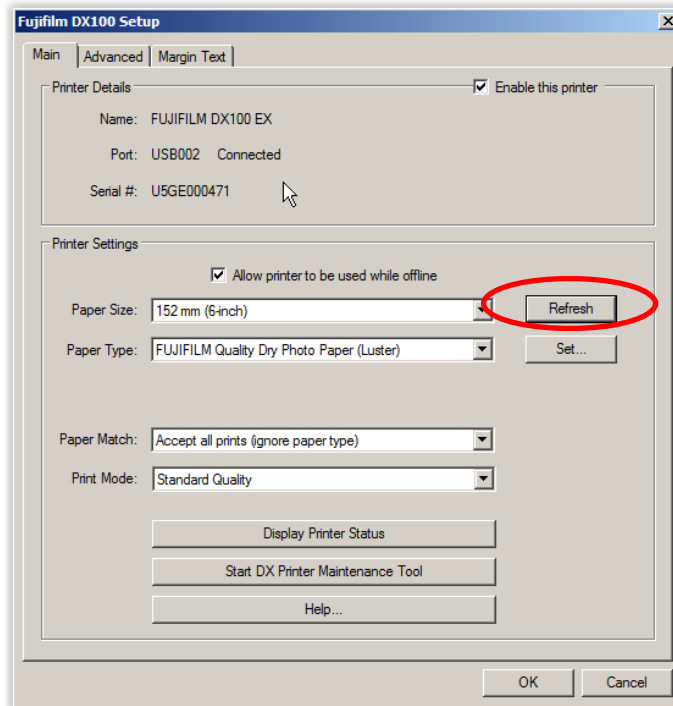
Windows Printer Set Up DarkRoom Pro V 9.10.1978



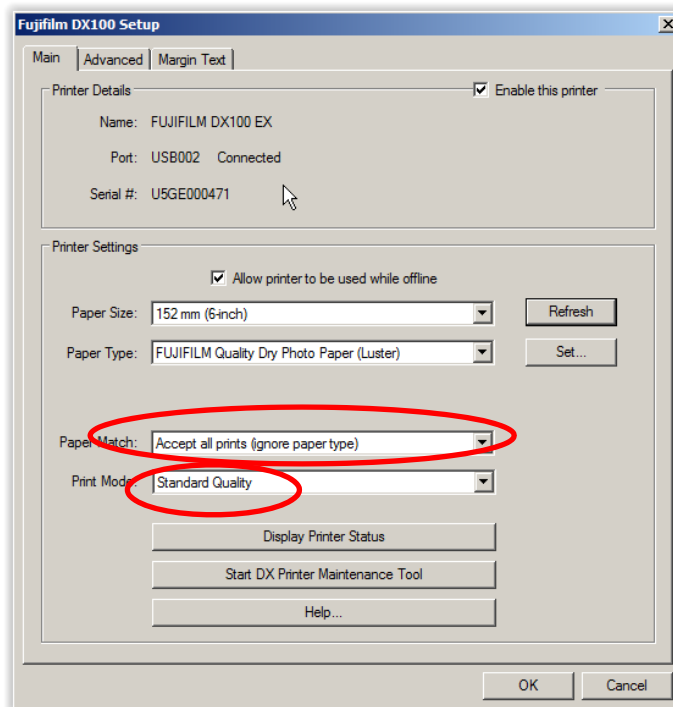
DX100 Printer Set Up DarkRoom Pro V 9.20.2232 or higher-



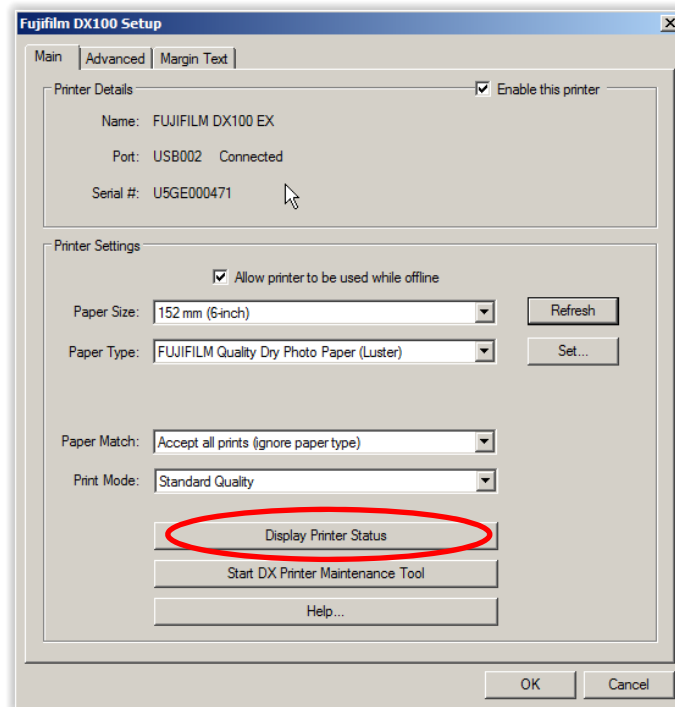
13. In **DarkRoom Pro V 9.20.2232 or higher**--Click on the Refresh Button. (Not available in Windows Print Driver Set Up.)



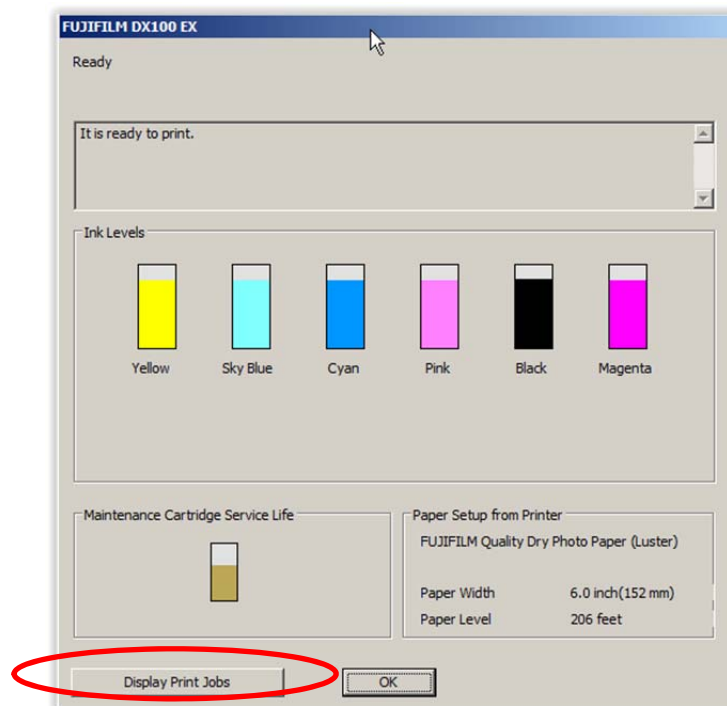
14. After clicking on the Refresh button you will note that the Remaining Paper footage and prints remaining will be displayed. You can also select workflow settings of Paper Match and Print Mode/Speed that you would like to use. (To start, it is suggested to not make changes to the default settings.) (Not available in Windows Print Driver Set Up.)



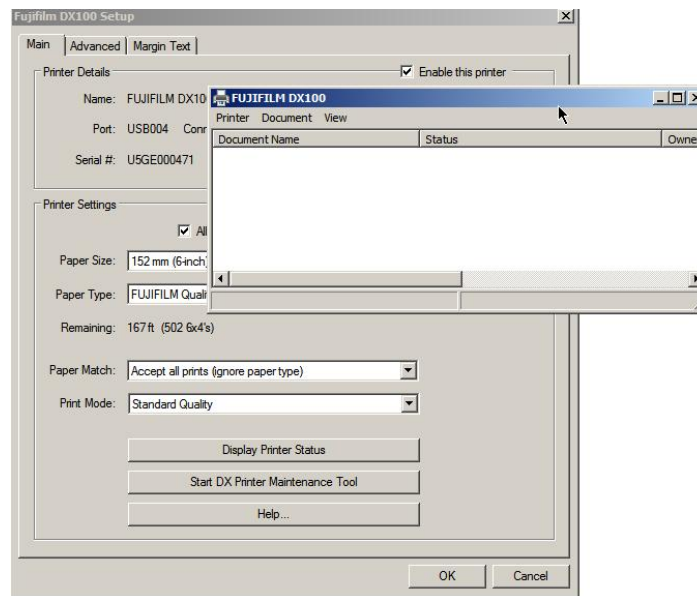
15. In either driver set up you can click on Display Printer Status and....



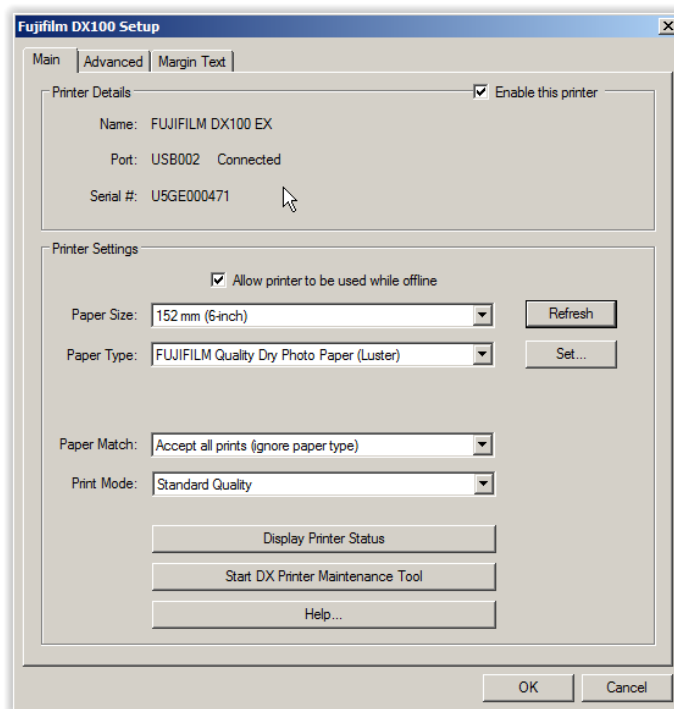
16. Bring up the DX100 Windows Driver Status Dialog. This window confirms printer status, ink levels remaining and Printer Paper Set Up. Selecting Print Queue



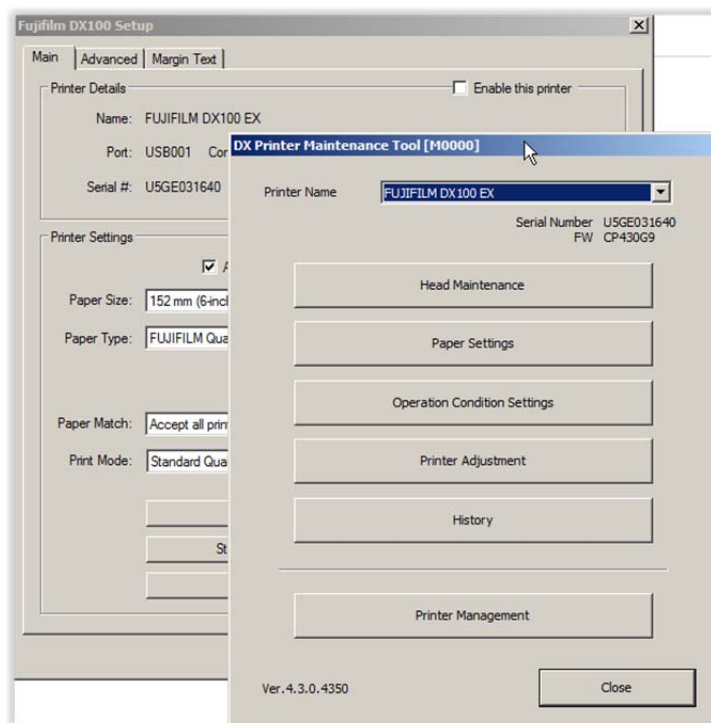
17. Print Queue: After selecting Print Queue the Windows Driver Print Queue is shown. When jobs are being printed you can monitor progress of jobs in the Windows Print Driver.



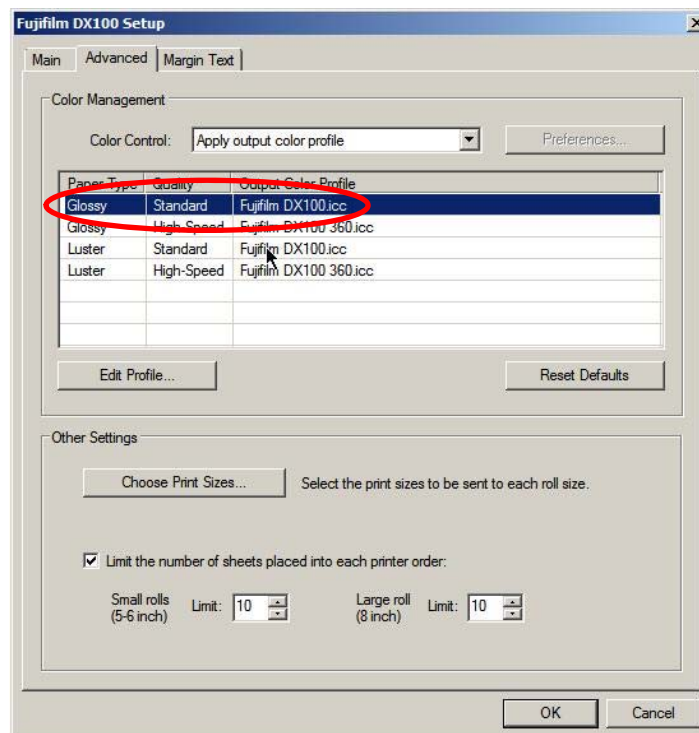
18. Selecting the Start Frontier-S DX100 Printer Maintenance Button launches Fujifilm DX100 Maintenance Menu.



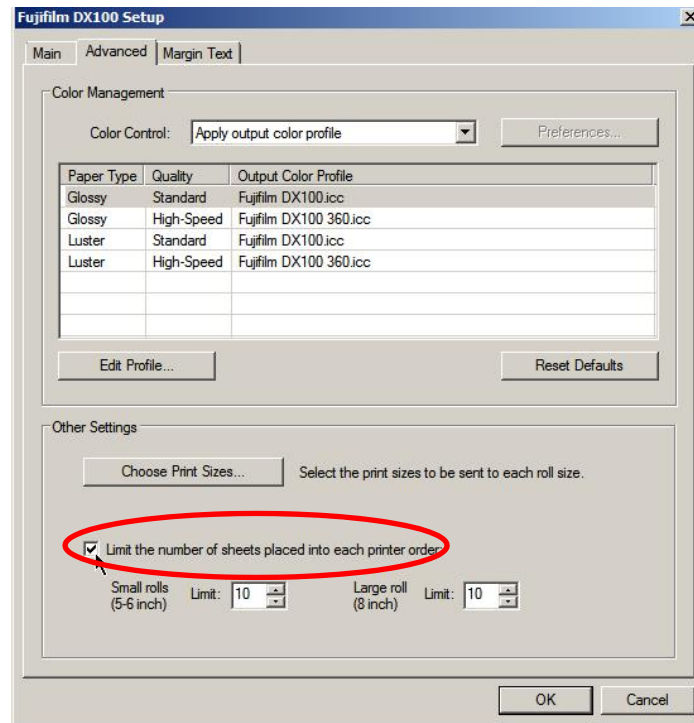
19. From the Fujifilm DX100 Maintenance Menu you may perform printer maintenance functions as necessary. Instructions for use of the Maintenance Menu can be found in the document **Frontier-S DX100 Printer Driver Operation Guide EN 1st edition.pdf**



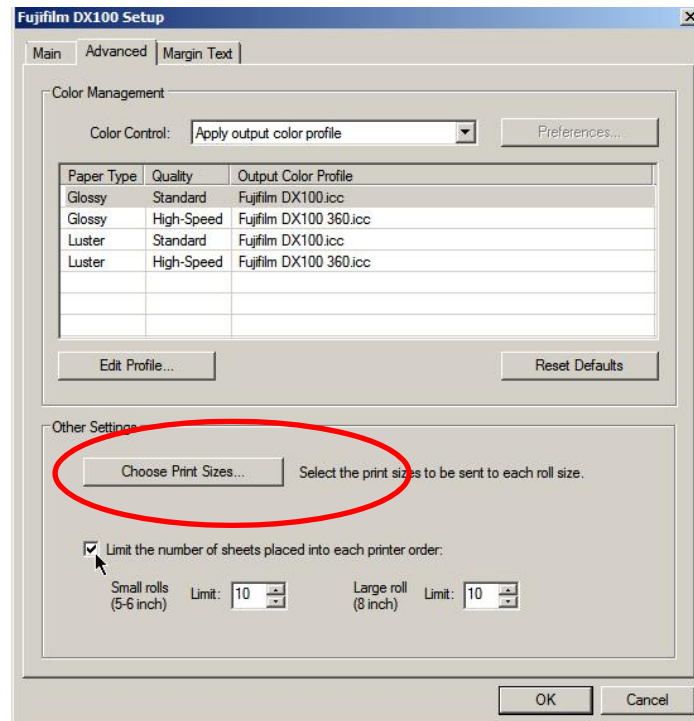
20. Color ICC Profile Use and Color Management:
ICC Profile use is very important to maintaining color quality and fidelity for InkJet output. When installing the Windows Print Driver generic ICC profiles are copied to the C:\Windows\System32\spool\drivers\color folder of your computer. You may also use custom ICC profiles that you or color profile vendor creates for you. The Advanced Tab on Printer Set Up allows users to automatically apply ICC Color output profiles prior to printing.



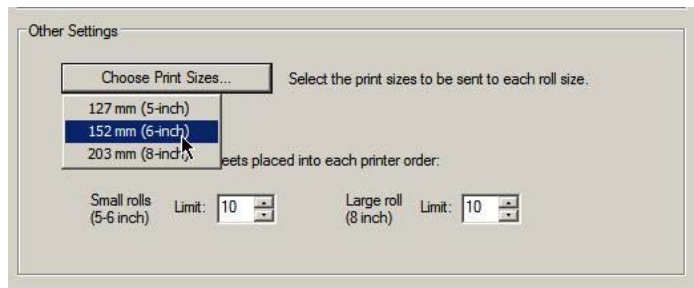
21. The lower portion of the Advanced Tab/Other Settings contains a check box in which you can limit the number of sheets sent to in to each printer order. Using this setting a user can easily load balance jobs between two printers loaded with the same roll width and surface materials. This enables faster production of large jobs to same roll widths.



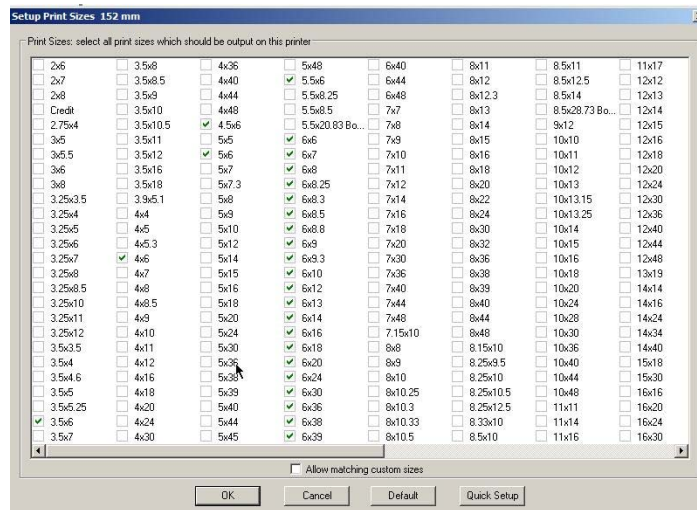
22. The lower portion of the Advanced Tab/Other Settings also has a Choose Print Size button which you can use to set up print sizes available to the printer you have just set up.



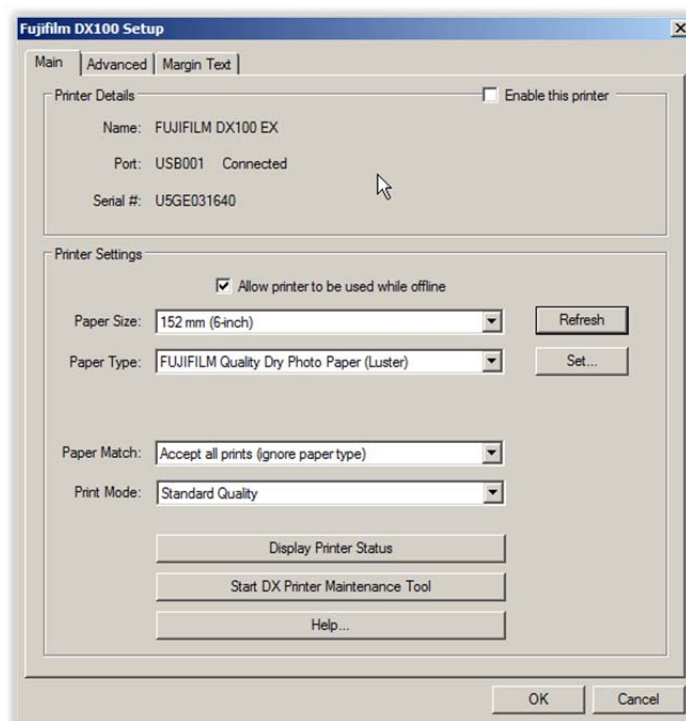
23. By selecting Chosse Print Size and choosing the specific roll width as user is brought to the print size selections for that partucular roll width.



24. The Set Up Print Size dialog box allows users to manually or automatically select prints sizes for each roll width specific to that printers set up.



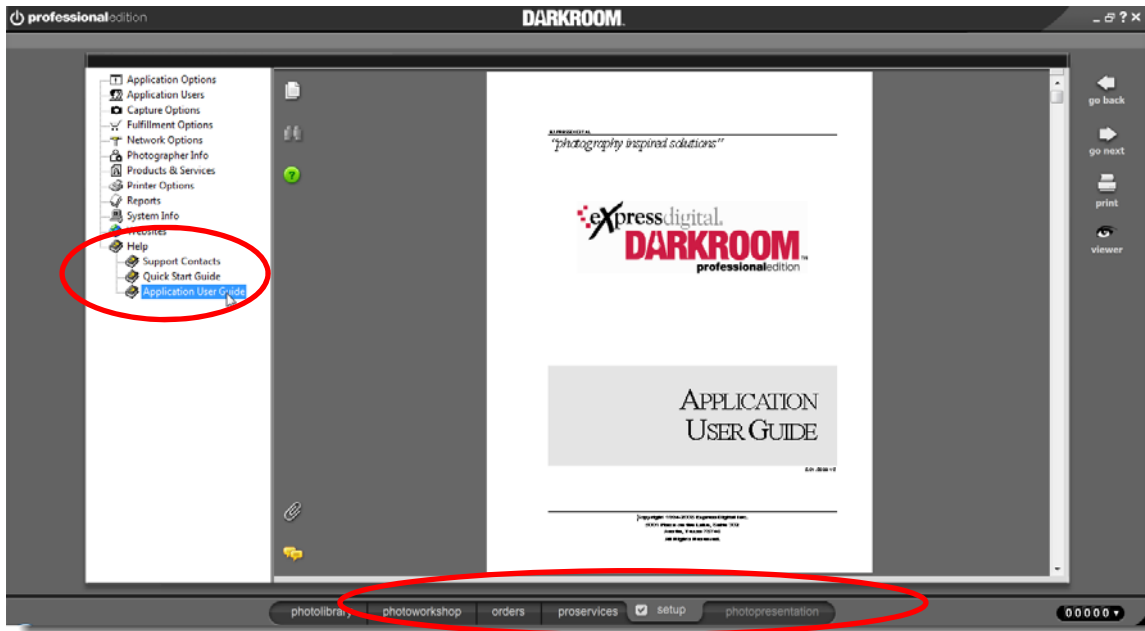
25. To finish Printer Set Up, Click OK.



26. To Set up additional printers connected to your computer with DarkRoom Pro repeat Steps 5 - 24 above.

Setup and use of DarkRoom Pro

Follow instructions provided on the DarkRoom Pro operation manual which can be found in the **DarkRoom Pro Set Up Tab** in the Left Hand Column under Help. There is also a Quick Start Guide and Support Contact Information.



For assistance with DarkRoom Pro Set Up, Training and Support please contact:

<http://www.darkroomsoftware.com/support>