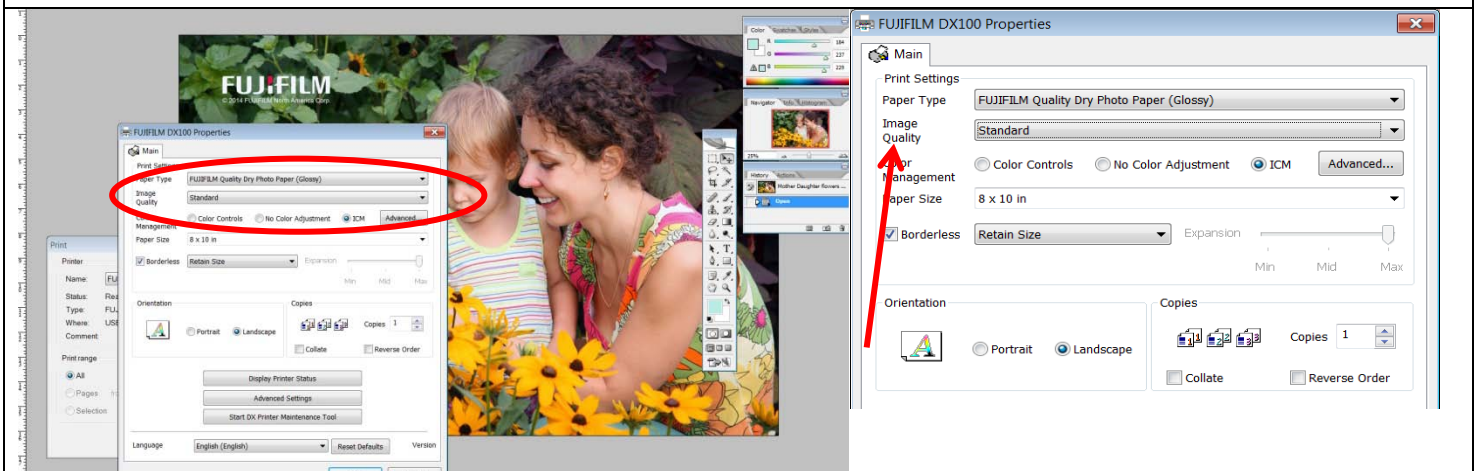
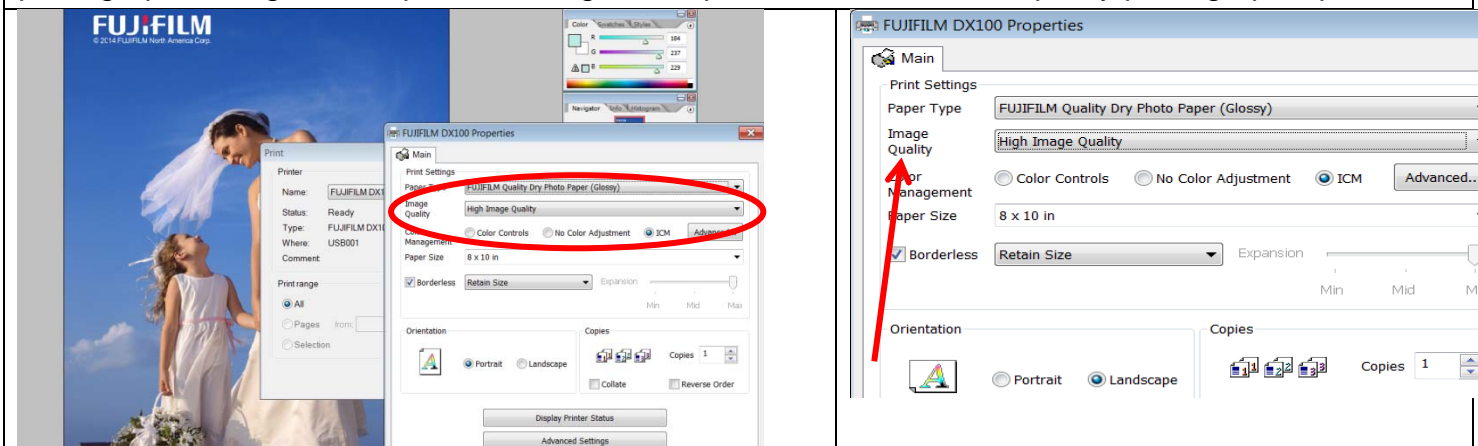


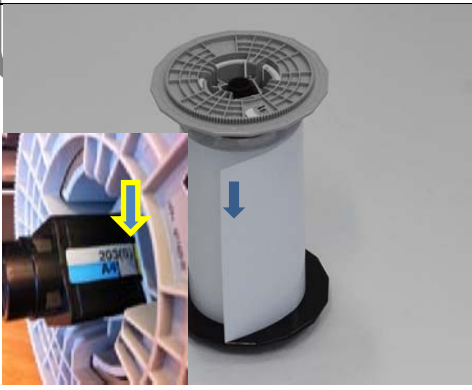
**High Speed: Image Quality Setting** (720dpi x 360dpi): Fastest printing speed for the DX100, approx. 20% faster than Standard Image Quality setting. This print setting is appropriate for quick proof printing during Image editing and printing (4"x 6") images that can be produced at reduced quality.



**Standard: Image Quality Setting** (720dpi x 720dpi): Default Printer setting and best combination of high print quality and high print output speed. The Standard Image Quality setting is appropriate for the various printing sizes from 5"x 3.5" up to 8"x 39" panoramic from various high quality digital photographic images. This printer setting will produce ideal Frontier quality photographic prints.



**High Image Quality: Image Quality Setting** (720 x 1440dpi) Highest quality and slowest printing speed 50% slower than the Standard Image Quality setting. This setting should be used for only images that require maximum print quality to produce the smoothest gradient backgrounds.



1. Slide the grey flange onto the spindle until fully pushed into the paper core. The number on the Spindle and the Paper Size match (8 inch paper shown)



2. Hold the spindle with the grey spindle on the left as shown above and remove any tape from Paper roll if still attached.



3. Load spindle unit in the roll paper feeder. Check that shaft of spindle fits into bearing as shown.



4. Insert leading edge of the paper into the feed slot until the blue paper light turns on.



5. Carefully push the roll paper feeder into the printer.



6. Carefully roll the paper back into the printer to take up any slack. Check that the blue paper light remains on.



7. Insert the bottom section of the scrap box and then push the top section into place.



8. Once the paper is loaded and the catch tray is back in place you can resume printing.