

**FUJIFILM**  
Value from Innovation

**Dimatix**

**ACCESSORY CATALOG**

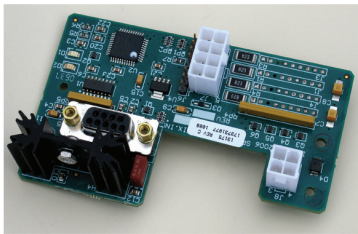
# ACCESSORY CATALOG

## Table of Contents

---

S-Class   Galaxy   Nova	
S-Class   Galaxy   Nova Accessories .....	2
Q-Class	
Q-Class Accessories .....	3
StarFire SG1024	
StarFire SG1024 Development Kit .....	4
Samba	
Samba Accessories .....	7
Samba Development Kit/ Evaluation Kit .....	7
Mercury	
Mercury Kit .....	12
Material Compatibility Kits (MCK) .....	13
Meniscus Pressure Controller (MPC) .....	15
Common Accessories	
Model Fluids .....	15
Filters .....	16
Lungs and Reservoirs .....	17
Wipes, etc. ....	19
Pumps .....	19
Heating .....	22

## S-Class | Galaxy | Nova Accessories



### Isolated Head Interface Board (IHIB)

P/N 2100006096

Consisting of:

- Assembly, PCB, IHIB
- Standoff, 4-40x1, Hex Alum (qty 4)
- Screw, 4-40x1/4, Pan PH, 316 SS (qty 4)



### S-Class Heater/Interface Bar Kit

P/N 2100050445

Consisting of:

- Anodized Aluminum Heater Bar, including embedded 24 V 25 W heater and 100 K $\Omega$  thermistor
- Dual fluid inlet ports for 3 mm (1/8 inch) ID tubing
- Screws, M2 x 4, Stainless Steel
- O-Rings, size .180ID x .038 EPR
- O-Rings, size .100ID x .038, EPR
- Screws, M3 x 16, Stainless Steel
- Compatible with: SL, SM, SE Jetting Assemblies. Mounts to one jetting assembly only. Does not mount or connect to reservoir.

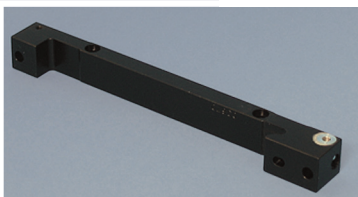


### 256-Jet Adapter Bar Kit

P/N 2100005999

Consisting of:

- Adapter Bar, 316 Stainless Steel, 256-Jet JA to Reservoir
- O-Rings, size 2-004, FFKM
- Screws, 4-40 x 5/8, Stainless Steel
- Screws, M3 x 20, Stainless Steel



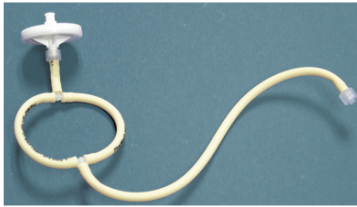
### S-Class Jetting Assembly Anodized Aluminum Adapter Bar Kit

P/N 2100005309

Consisting of:

- Adapter Bar, Anodized Aluminum, S-Class to Reservoir
- O-Rings, size 2-003, EPR
- Screws, 4-40 x 5/8, Stainless Steel
- Screws, M2X16, Stainless Steel
- Screws, M2x10, Stainless Steel
- Flat Washers, M2, Stainless Steel
- AN000005 - Assembly Instructions for S-Class Jetting Assembly with a Dimatix Reservoir and Adapter Bar
- Compatible with: SL, SM, SE Jetting Assemblies. Connects to one jetting assembly to one reservoir.

## Q-Class Accessories

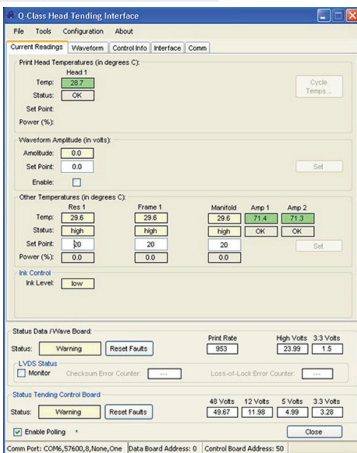


### Polaris Start-Up Filter Kit

P/N 2100019156

Consisting of an assembly made up of:

- 10 µm Pall filter with Luer lock fitting (Quantity 1)
- Luer lock fittings, male to 1/8 inch (Quantity 1)
- Tee fitting with similar barbs (Quantity 2)
- 1/8 inch ID Pharmed tubing
- 2 kits required per printhead



### Q-Class Head Tending Interface

P/N 2100018981

PC interface package for RS-485 communication with the electronics bundles of the TestPAQ.

- Ulinx Isolated RS-422/485 USB Adapter (USOPTL4)
- 5 meters [16.4 ft] 2 pair 24 awg shielded cable (USB Adapter to controller)
- 1 meter [3.3 ft] Type A Male to Type B Male USB Cable
- USB to Serial Driver CD
- USB Adapter (USOPTL4) Data sheet
- Q-Class Head Tending Interface Software CD



### Polaris Frames

- Provides precision mounting of (2) 256-jet module FRUs
- Registration surfaces for mounting into customer provided carriage plate
- 2 temperature control zones (heater, thermister, thermal fuse)
- Field replaceable unit (FRU)

100 dpi frame

P/N 2100022871

200 dpi frame

P/N 2100028389



### Polaris Frame Screws

P/N 2100023413

M3 Shoulder screws for mounting the frame to the carriage.

## StarFire SG1024 Development Kit



### StarFire SG1024 Development Kit

Viton tubing for ceramic inks:

---

Small head P/N 2100025148

---

Medium head P/N 2100024447

EPDM for Aqueous and other inks:

---

Small head P/N 2100025150

---

Medium head P/N 2100024669



### Starfire SG1024 Development Kit without Mercury

Viton tubing for ceramic inks:

---

Medium head P/N 2100025318

EPDM for Aqueous and other inks:

---

Medium head P/N 2100025319

### **StarFire Development Kit Field Replaceable Units (FRUs)**

Printhead Assembly, Small Viton	P/N 2100026904
Printhead Assembly, Small EPDM	P/N 2100026905
Mercury	P/N 2100025261
Ink Supply Cabinet, Viton	P/N 2100024449
Ink Supply Cabinet, EPDM	P/N 2100024666
Printhead Assembly, Medium Viton	P/N 2100024448
Printhead Assembly, Medium Aqueous	P/N 2100024667
Drop Watcher Adapter	P/N 2100024998
Ink Pump, IPO0, 24V	P/N 2100024327
Lung Vacuum Air Pump	P/N 2100007119
Recirculation Vacuum Air Pump, Viton & EPDM	P/N 2100020023
Fuse, 6.3A, 250V	P/N 2100017720
Fuse, 4A, 250V	P/N 2100004150
Pneumatic/Electrical Umbilical, Viton	P/N 2100024450
Pneumatic/Electrical Umbilical, EPDM	P/N 2100024668
Printhead Control Cable	P/N 2100025306
Solenoid Valves, Printhead, Viton	P/N 2100025192
Solenoid Valves, Printhead, EPDM	P/N 2100025324
Solenoid Valve O-Ring, 2-012, Viton	P/N 2100051311
Solenoid Valve O-Ring, 2-012, EPDM	P/N 2100002215
Solenoid Valve O-Ring, 2-019, Viton	P/N 2100024902
Solenoid Valve O-Ring, 2-019, EPDM	P/N 2100024901
Filter, 5 $\mu$ M	P/N 2100020127
Small Capsule filter	P/N 2100100836
Small 6 $\mu$ M Capsule filter, UV	P/N 2100022942
MPC	P/N 2100050470
Solenoid Valves, Ink Cabinet Viton	P/N 2100024741
Solenoid Valves, Ink Cabinet EPDM	P/N 2100025324

### StarFire SG1024 Cord Sets

EU Cord set	P/N 2100200061
UK Cord set	P/N 2100200062
US Cord set	P/N 2100200063
Israel Cord set	P/N 2100200064
Continental Europe cord set	P/N 2100017393
Italian Cord set	P/N 2100017769
Swiss Cord set	P/N 2100016865
Danish Cord set	P/N 2100017329
China Cord set	P/N 2100016615
Japan Cord set	P/N 2100016614
Austria Cord set	P/N 2100200065



### StarFire SG1024 Syringe Refill Kit

P/N 2100052547

Consisting of:

- Fitting, Manual Refill
- Tubing, .067 ID x .125 OD
- Tubing, 3/16 in.
- Syringe, 20cc, Luerlock Tip
- Syringe, Blunt Disp.Tip, 0.065
- Filter, 5  $\mu$ m, Syringe, Nylon

Compatible with: Dimatix Reservoirs (except Hot Melt),  
TestPAQ, and Mercury Head Mount.

---

## Samba Accessories



### Samba Liquid Cooling System

P/N 2100201581

\*Includes:

- Tubing
- Fittings
- Coolant
- Attachment Strap



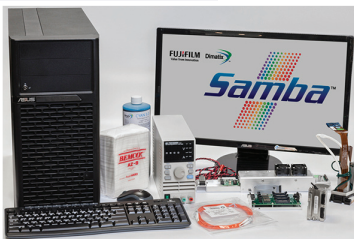
\*Possibly with these accessory options (see website for details)

## Samba Development Kit/ Evaluation Kit



### Samba Printhead Development Kit

4 Modules wide, 1 color	P/N 2100201449
4 Modules wide, 2 color	P/N 2100201649
4 Modules wide, 3 color	P/N 2100201651
4 Modules wide, 4 color	P/N 2100201452
8 Modules wide, 1 color	P/N 2100201450
8 Modules wide, 2 color	P/N 2100201650
8 Modules wide, 3 color	P/N 2100201652
8 Modules wide, 4 color	P/N 2100201645



### Samba Printhead Evaluation Kit

Eval Kit Samba 1C	P/N 2100201577
Eval Kit Samba 2C	P/N 2100201646
Eval Kit Samba 3C	P/N 2100201647
Eval Kit Samba 4C	P/N 2100201648

### Samba Ink System Package

Evaluation Kit Ink System Package	P/N 2100201302
Development kit Ink System Package	P/N 2100031797

\*Discount when multiple purchased at same time







## Samba Development Kit/Evaluation Kit

---

### Samba Development Kit Ink System Upgrade

P/N 2100032741

Upgrade from 4 to 8 heads

---



### Samba Non-Heated Manifold

P/N 2100204721

Unheated manifold receives and circulates ink to the Samba printheads. This manifold is included in P/N 2100032741.

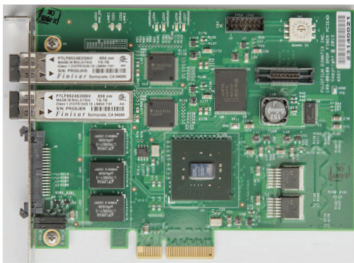
---



### Samba Membrana Contactor

P/N 2100204598

- In-line contactor to be replaced with cleaning or ink charges.
- 

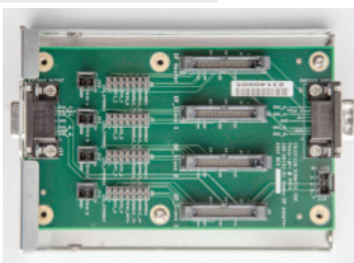


### Samba Data Pump

P/N 2100201491

PCI-Express 4X design with two duplex fiber connections that connect to the quad board.

---



### Samba Data Pump Adapter Board

P/N 2100201565

- An adapter board which allows for multiple Data Pumps to be driven by a single encoder and/or trigger signal.

Includes:  
Ribbon cables

---



### Samba Power Supply

P/N 2100201521

- This Agilent N5767A power supply provides 0-60V at up to 25A (1500W max).
- Can drive up to 4 Quad Boards.
- Compatible with: Samba Single or Quad driver boards.

## Samba Development Kit/Evaluation Kit

---



### Samba Encoder Harness

P/N 2100201729

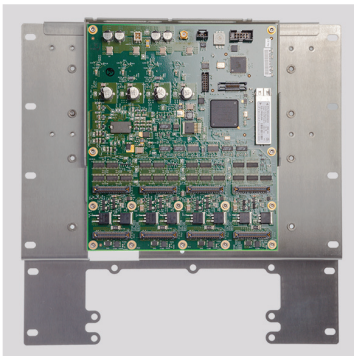
Cable for connecting between FDMX Data Pump Adapter Board and Encoder.



### Samba Encoder Assembly

P/N 2100201579

(Includes Samba Encoder Harness - 2100201729)  
The encoder connects to the customer supplied media transport.



### Samba Electro/Fluidic Assembly

P/N/ 2100201559

Includes:

Quad Power Cable	P/N 2100201734
Optical Fiber Cable	P/N 2100201731
Samba Quad Driver PCB with Cooling Assembly	P/N 2100201615
Metal Backplane	P/N 2100201477



### Samba Optical Fiber Cable

P/N 2100201731

Provides the data path connection between a Quad Driver Board and a Data Pump within the computer work station.

Note: This cable is included in the 2100201558 Samba Electro/fluidic Assembly



### **Samba Quad Power Cable**

P/N 2100201734

Provides 48V to each Quad or Single Samba Driver board.

Note: This cable is included in the 2100201559 Samba Electro/fluidic Assembly

---



### **Samba Dovetail Clamp**

P/N 2100201314

The dovetail clamp holds the Samba printhead and the mounting bracket which holds the dovetail mount and mounts to your print system.

---



### **Samba Printhead Yaw Adjustment Tool**

P/N 2100200898

Interfaces with FDMX clamps to allow for head yaw adjustments.

---

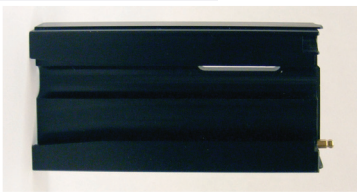


### **Samba Printhead Stitch Adjustment Tool**

P/N 2100204603

Interfaces with FDMX clamps to allow for head to head distance adjustments.

---



### **Samba Printhead Insertion Tool**

P/N 2100201549

This highly recommended tool interfaces with FDMX dovetail clamps to allow for easy insertion and removal of Samba printheads. Includes removable allen wrench.

---



### **Samba Bar, Four Position**

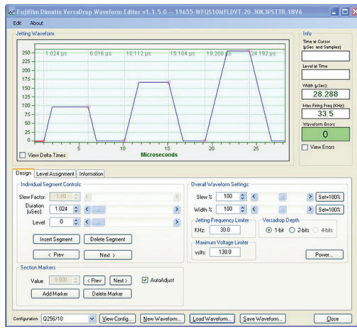
P/N 2100201388

Mounting bar for Samba printheads, including clamps and is optically aligned.

## Versadrop Waveform Editor

P/N 2100019606

Tool for creating and editing waveforms.



## Samba Evaluation/Development Kit Cord Sets

EU Cord set	P/N 2100200061
UK Cord set	P/N 2100200062
US Cord set	P/N 2100200063
Israel Cord set	P/N 2100200064
Continental Europe cord set	P/N 2100017393
Italian Cord set	P/N 2100017769
Swiss Cord set	P/N 2100016865
Danish Cord set	P/N 2100017329
China Cord set	P/N 2100016615
Japan Cord set	P/N 2100016614
Austria Cord set	P/N 2100200065

## Mercury Kit

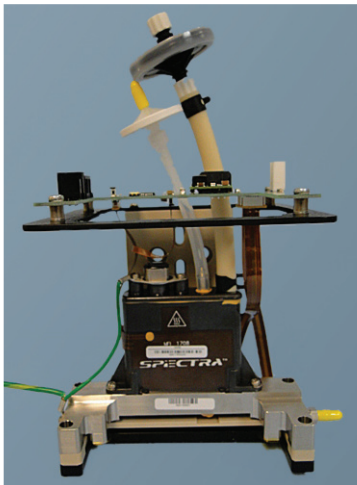


### Mercury Kit (box only)

P/N 2100025261

Applications:

- Drop Watcher
- Web Drive
- Scanning



### Mercury Head Mount

P/N 2100023329

The Mercury Head Mount provides the interfaces to mount a Q-Class Printhead to the Mercury Development Kit. Includes:

- Frame/printhead mount (to house 1 reservoir, 1 PH, and 1 HIB)
- HIB – Head Interface Board
- 1 reservoir with VLOIS
- Heater /Thermistor connections
- Ink line tubing with filter
- Meniscus line tubing with filter
- Ground wire
- 1 Heater HIB to Mercury Dev. Kit cable (p/n 23493) 60 cm (23.6 inches)
- 1 HIB power cable (p/n 23496) 60 cm (23.6 inches)
- 1 Flex Extension Cable (p/n 20294) Adapts PH cable to HIB board
- PH Mounting Kit (p/n 23676)
- 2 - M3 screws
- 2 - bell (curved) washers
- 2 - flat washers
- 2 - Viton O-rings
- Torque driver with T10 bit preset to 0.5 Nm.

### Mercury Cord Sets

EU Cord set	P/N 2100200061
UK Cord set	P/N 2100200062
US Cord set	P/N 2100200063
Israel Cord set	P/N 2100200064
Continental Europe cord set	P/N 2100017393
Italian Cord set	P/N 2100017769
Swiss Cord set	P/N 2100016865
Danish Cord set	P/N 2100017329
China Cord set	P/N 2100016615
Japan Cord set	P/N 2100016614
Austria Cord set	P/N 2100200065

# Materials Compatibility Kits (MCK)

## **Galaxy and Nova MCK**

P/N 2100010768

Consisting of 3 pieces of:

- Upilex rocktrap
- Epon epoxy coated slides
- Parylene-coated slides
- Stainless steel orifice plate
- Kovar material
- Ceramic PZT material
- Carbon AXF5Q-CF pieces
- Flex Link material
- Flex Print
- Upilex prebond samples
- AXF collar-manifold assemblies
- O-rings
- IN000005 - Instructions (Quantity 1)

---

## **S-Class MCK**

P/N 2100008674

Consisting of 3 pieces of:

- AXF carbon
- Parylene-coated slides
- Epon epoxy coated slides
- Upilex Rocktrap material
- Kovar material
- Ceramic PZT material
- Gold nozzle plates
- Stainless steel descender material
- Flex link material
- Flex Print
- Upilex prebond samples
- Nozzle plate assemblies
- O-rings
- IN000006 - Instructions (Quantity 1)
- S-Class AA Jetting Assemblies Materials Samples

## Materials Compatibility Kits (MCK)

---

### **PQ, QE, QS AAA, and StarFire SG1024 MCK**

P/N 2100021164

Consisting of 3 pieces of:

- Carbon array body
- Prebond Assembly
- Parylene coated slide
- Epoxy coated slide
- Barb fitting
- 17-7 Stainless Steel descender plate
- Nozzle plate - Nickel, Gold
- Nozzle plate piece - Silicon
- Nozzle plate piece - coated electroform Nickel
- Viton tubing
- Nylon Luer fitting
- IN000046 - Instructions (Quantity 1)

---

### **Samba MCK**

P/N 2100201341

Consisting of 3 pieces of:

- Coupon - Epoxy on MVD SiO<sub>2</sub>
- Coupon - Epoxy on thermal oxide Si
- Coupon - Epoxy on ceramic
- Coupon - Sealant on ceramic
- Ink Filter Screen
- O-ring
- Ink Tubing - Pharmed
- Black Luer Fitting
- Clear Luer Fitting
- Flex Circuit
- Vent Circuit: Viton (Green) tubing
- Coupon NWC On Silicon
- Ink Tubing - Norprene Black
- Instructions - IN000084

# Meniscus Pressure Controller (MPC)



## Meniscus Pressure Controller

P/N 2100050470

Compact 4-channel standalone unit used to maintain meniscus vacuum for Nova and Galaxy 256-channel print-heads, Q-Class, S-Class and SG1024 jetting assemblies.

### Options:

Fluid in Line Monitor (FiLM), 2 Sensor

### MPC FRUs:

Filter	P/N 2100009226
Meniscus pump	P/N 2100009223
Purge pump	P/N 2100009224

## Common Accessories

### Model Fluids



#### Model Fluid 7060 Series

Color	Quantity	Packaging	
Blue	4	1 Liter cubetainer	P/N 2100016707
Red	4	1 Liter cubetainer	P/N 2100016713
Yellow	4	1 Liter cubetainer	P/N 2100016711
Black	4	1 Liter cubetainer	P/N 2100016709



#### Model Fluid XL-30 Series

Color	Quantity	Packaging	
Blue	4	1 Liter cubetainer	P/N 2100016701
Red	4	1 Liter cubetainer	P/N 2100016662
Yellow	4	1 Liter cubetainer	P/N 2100016703
Black	4	1 Liter cubetainer	P/N 2100016705
R, B, Y, K	1 each	1 Liter cubetainer each	P/N 2100016720

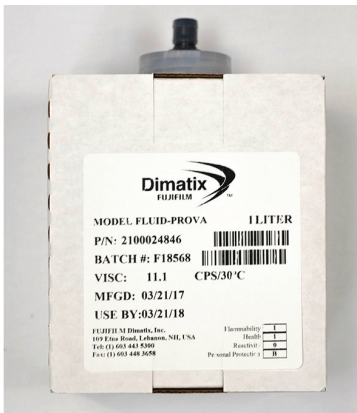


## Model Fluids



### Model Fluid XL-30 Series

Color	Quantity	Packaging	
Red	1	0.5 Liter Bottle	P/N 2100012462



### Prova Model Fluid

Color	Quantity	Packaging	
Purple	4	1 Liter cubetainer	P/N 2100024936



### Topaz Water-Based Model Fluid

Color	Quantity	Packaging	
Cyan 5.0	1	1 Liter Bottle	P/N 2100200328

## Filters



### Pneumatic Tubing Disc Filter Air Line (0.2 micron)

P/N 2100006679

Consisting of:

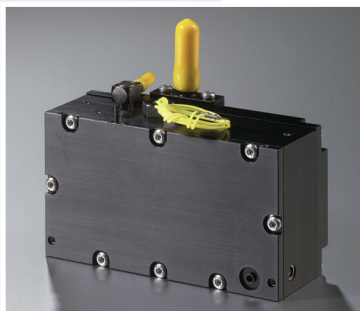
- Filter, 0.2µm, Inline, Teflon Disk (Quantity 4 per order)

### Filter, Pall Acro 37, 10 µm, LCF w/barb (qty. 50) (Skywalker & PQ)

P/N 2100023467

## Lungs and Reservoirs

---



### **Anodized Aluminum Reservoir/Lung Remote Reservoir-Lung Assembly**

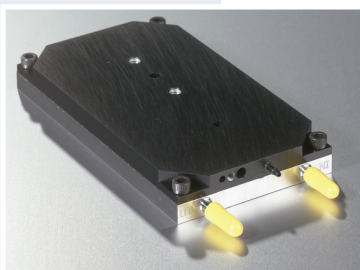
P/N 2100050442

- Fluid reservoir module for use inline or attached to one or more Spectra jetting assemblies. The Aluminum version, 20 ml, is equipped with EPDM O-rings.

#### **Options:**

Heater cartridge and thermistor temperature sensor.  
Not supplied with interface to jetting assembly.

---



### **Remote In Line 316 Stainless Steel Lung Module**

P/N 2100005841

- Compact degassing unit, for use with aggressive fluids. The unit is stackable for increased capacity. The only materials in contact with the fluids are PFE, 316 stainless steel and perfluoroethylene.

#### **Options:**

Heater cartridge and thermistor temperature sensor.  
Not supplied with interface to jetting assembly.

---



### **Stainless Steel Reservoir/Lung Remote Reservoir-Lung Assembly**

P/N 2100005560

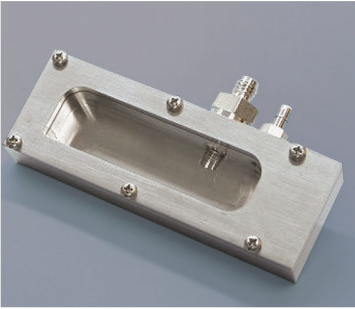
- Fluid reservoir module for use inline or attached to one or more Dimatix jetting assemblies. It is designed for very aggressive fluids. The Stainlesssteel version, 20 ml, is equipped with perfluoroethylene O-rings.

#### **Options:**

Heater cartridge and thermistor temperature sensor.

## Lungs and Reservoirs

---



### Ink Development Reservoir

P/N 2100004365

Consisting of:

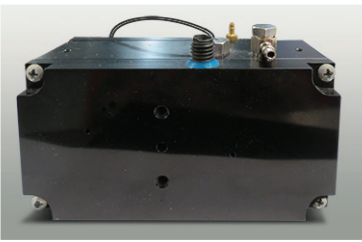
- Ink Development Reservoir
- Manual Refill Kit

#### Compatible with:

All Jetting Assemblies/Adapter Bars.

Not supplied with interface to jetting assembly.

---

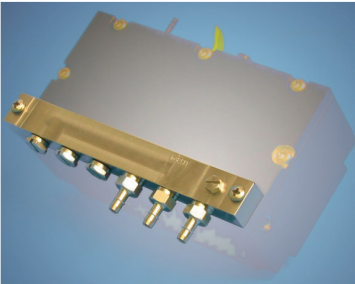


### Hot Melt Reservoir

P/N 2100004894

Black anodized aluminum reservoir for use with Hot Melt; includes high temp LOIS and 2100053210 heater/thermistor harness. Not supplied with interface to jetting assembly.

---



### Reservoir Outlet Manifold

The outlet manifold distributes fluid from a reservoir to up to 6 jetting assemblies. Mounts to one reservoir; does not mount directly to jetting assembly. Requires interface at jetting assembly to make connection.

Consisting of:

- Manifold Bar, 316 Stainless Steel
- Stainless Steel Barbed Fitting for 1/8 inch ID tubing (Quantity 1 for each jetting assembly)
- Stainless Steel M5 Plug (Quantity 1 for each unused outlet) and 1-M3 Plug
- Screws, 4-40X 1/2 inch, Stainless Steel

#### Style

---

1 Up, for a single jetting assembly	P/N 2100005407
2 Up, for 2 jetting assemblies	P/N 2100005404
3 Up, for 3 jetting assemblies	P/N 2100005403
1 to 6 Up, for developing individual configurations from 1 to 6 jetting assemblies	P/N 2100006024

---

#### Compatible with:

Nova, Galaxy, S-Class Jetting Assemblies, and Polaris Printheads

## Wipes, Etc.

---



### **Web Transport Paper, Roll**

P/N 2100005460

- 3 in x 1000 ft, 3 inch core

---

### **Coated Paper Coupons**

P/N 2100005690

- 3.86 x 6.9 in., 500/Pkg



### **Lint-Free Clean Wipes**

- 4 x 4 in., 600/Pkg

P/N 2100007480

- 9 x 9 inch, 800/pkg

P/N 2100001287



### **Empty Cubetainer**

P/N 2100009540

- 6 – 1 liter ink bladder bag, cap, and corrugated box

## Pumps

---



### **Peristaltic Fluid Pump**

P/N 2100003802

Consisting of:

- Pump, 12VDC, Masterflex
- Cable, Ink Pump Power
- Cable, External, Pump Control

## Pumps

---



### **Ink Line Assembly with Filter and Adapter (Connects from Pump Head Tube to Incline)**

P/N 2100006141

Consisting of:

- Filter, 5  $\mu$ m, MAPP Disk, Polypropylene Housing
- Tubing, 1/16ID, Pharmed
- Fittings, Male Luerlock x 3/32HB, Polypropylene



### **Connection Tube (Connects from Cubetainer to Pump Head Tube)**

P/N 2100004326

Consisting of:

- Fitting, 1/4HB-PS Coupling
- Tubing, 3/16ID, Pharmed
- Fitting, 1/4, Barb, Poly, Male
- Clamp, Flow Control



### **Manual Refill Kit**

P/N 2100052547

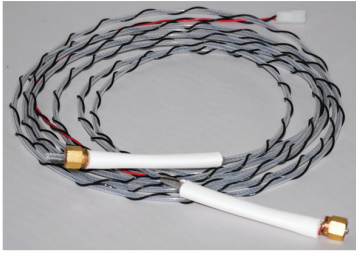
Consisting of:

- Fitting, Manual Refill
- Tubing, .067 ID x .125 OD
- Tubing, 3/16 in.
- Syringe, 20cc, Luerlock Tip
- Syringe, Blunt Disp. Tip, 0.065
- Filter, 5  $\mu$ m, Syringe, Nylon

### **Compatible with:**

Dimatix Reservoirs (except Hot Melt), SapKIT, PolKIT, TestPAQ, and Mercury Head Mount.

## Pumps



### Heated Hot Melt ink delivery line, UM-04M-NT/DT-69

P/N 2100018903

#### Umbilical Key:

#### UM-XXX-XX/XX-XXX-XXX

**UV** – UV Ink Compatible  
**NRW** – No Return Wire

Heater Resistance at 25°C (00= no heater)

End fittings:

**DT/NT** – Deep Throat to Normal Throat  
**NT/NT** – Normal Throat to Normal Throat  
**DT/BJ** – Deep Throat to Banjo barb

**XXX** – Length in inches  
**XXM** – Length in meters

**UM** - Umbilical



### TLOIS, High Temp, Hot Melt 10 pack:

P/N 2100013372

P/N 2100019940

Thermal Low On Ink Sensor for use with hot melt ink at temperatures above 70° C. 5K. 9 inch lead length. Male terminal.



### LOIS, High Temp, Hot Melt

P/N 2100013369



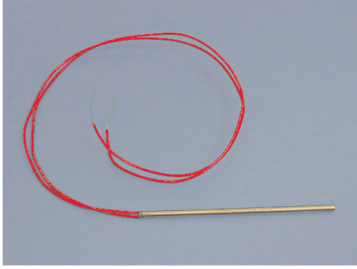
### TLOIS, Low Temp, TLOIS with parylene:

P/N 2100050407

P/N 2100102632

Thermal Low On Ink Sensor - Fluid level sensor used in many Dimatix reservoirs. For use with Liquid inks.

# Heating



## Heaters

Cartridge heaters provide a source of heat to either a jetting assembly or reservoir. The heaters are sealed cartridge heaters with unterminated 24 AWG Teflon insulated leads, and are 3 inches long.

Volts	Watts	Diameter	Compatible with:	
110	50	1/8 inch	Nova & Galaxy Jetting Assemblies	<a href="#">P/N 210004797</a>
110	50	1/4 inch	Galaxy Printheads, Remote Reservoir-Lung Assemblies	<a href="#">P/N 210004992</a>
110	25	1/8 inch	SL, Nova, and Galaxy Jetting Assemblies	<a href="#">P/N 210005334</a>
24	25	1/8 inch	SL, Nova, and Galaxy Jetting Assemblies	<a href="#">P/N 210005335</a>
24	50	1/4 inch	Nova and Galaxy Jetting Assemblies, Galaxy printheads	<a href="#">P/N 210005336</a>
24	50	1/8 inch	Nova and Galaxy Jetting Assemblies	<a href="#">P/N 210006371</a>



## Thermo-Electric Wiring Harnesses

Thermo-Electric wiring harness assemblies provide heat and temperature sensing to jetting assemblies or reservoirs. Includes heater(s) and a 100K thermistor terminated in a Molex MicroFit 3.0 connector. Assemblies are 3 inches long.

Volts	Watts	Diameter	Compatible with:	
24	50	1/4 inch	Nova & Galaxy printheads, Remote Reservoir-Lung Assemblies	<a href="#">P/N 210005377</a>
110	50	1/4 inch	Nova, and Galaxy printheads, Remote Reservoir-lung Assemblies	<a href="#">P/N 210005378</a>
24	50	1/8 inch	Nova, and Galaxy Jetting Assemblies	<a href="#">P/N 210006357</a>
110	25	1/8 inch	SL, Nova, and Galaxy Jetting Assemblies	<a href="#">P/N 210006359</a>
110	50	1/8 inch	SL, Nova, and Galaxy Jetting Assemblies	<a href="#">P/N 210007159</a>
2 - 110	2 - 50	1/4 & 1/8 inch	Nova Printheads	<a href="#">P/N 210007811</a>
2 - 110	2 - 50	2-1/4 inch	All Galaxy Printheads except 512	<a href="#">P/N 210006836</a>

## Heating

---

### **Thermistor Assembly**

P/N 2100052936



A thermistor is a thermally sensitive device used for temperature sensing and control within a reservoir or jetting assembly.

Consisting of:

- 100 K $\Omega$  (@25°C) Thermistor
- .070 inch diameter x .25 inch thermistor, with 12 inch 28 AWG, Teflon insulated wire with unterminated leads

### **Compatible with:**

Galaxy, Nova, and S-Class products and all Reservoirs

---



**Corporate Office:**

FUJIFILM Dimatix, Inc.  
2230 Martin Avenue  
Santa Clara, CA 95050  
USA

Tel: (408) 565-9150  
Fax: (408) 565-9151  
Email: [info@dimatix.com](mailto:info@dimatix.com)

**New Hampshire Facility:**

FUJIFILM Dimatix, Inc.  
109 Etna Road  
Lebanon, NH 03766  
USA

Tel: (603) 443-5300  
Fax: (603) 448-9870  
Email: [info@dimatix.com](mailto:info@dimatix.com)

[www.dimatix.com](http://www.dimatix.com)



Dimatix, Samba, Starfire, Galaxy, Nova, VersaDrop, and Polaris are trademarks and registered trademarks of FUJIFILM Dimatix, Inc. in various jurisdictions. FUJIFILM is a registered trademark of FUJIFILM Corporation. All other trademarks are the property of their respective owners. Copyright ©2017 FUJIFILM Dimatix, Inc. All rights reserved.