



# **FUJIFILM SX Series Controller**

**Application Manual**

**V1.2.0.2**

# Introduction

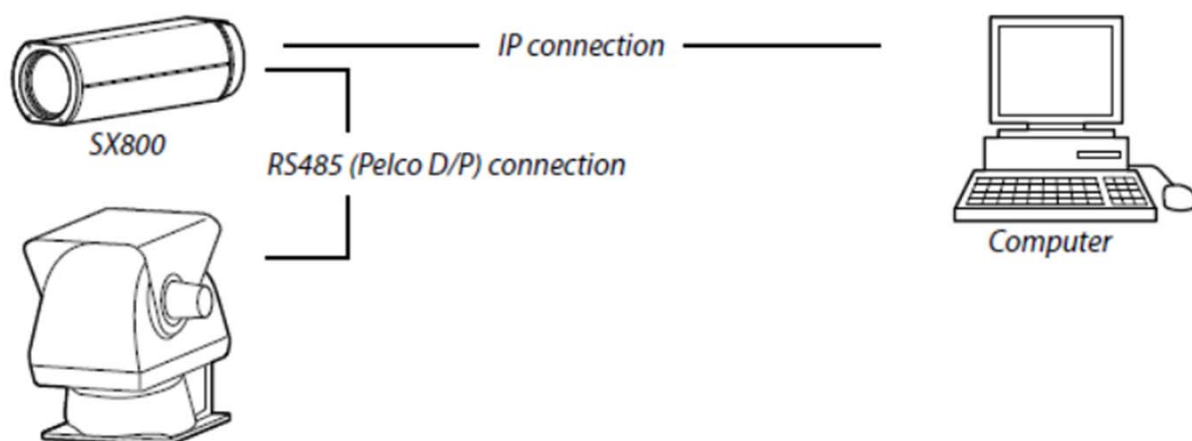
This software is used to control the camera's functions when the Long Range Surveillance Camera SX Series is connected via IP.

Since there is no video display function, please use monitor or VMS software separately.

The following functions can be operated.

Function	Display name	Keyboard Operation	UI operation
Zoom (Tele/Wide)	Zoom Tele / Zoom Wide	○	○
Focus (Near/Far)	Focus Near / Focus Far	○	○
One push AF	OnePush	○	○
AF setting	AutoFocus	○	○
Backlight correction	Backlight	○	○
Heat haze reduction	Heathaze	○	○
Fog reduction	Defog	○	○
Noise reduction	NoiseReduction	○	○
Wide dynamic range	WDR	○	○
Image stabilization	ImageStabilizer	○	○
Optical filter	OpticalFilter	○	○
Pan/Tilt	-	○	-
Pan/Tilt speed change	PanTiltSpeed	-	○

Note: Pan/Tilt and Pan/Tilt speed can be changed only when connected to Pan/Tilt unit with the configuration shown below.



---

# System Requirements

---

Supported operating systems	Windows 10 (version 1909 or later)
.Net Framework version	4.6.2 or later
Connectable camera (Model, FW version, HTTP authentication method)	SX800 FW version: 2.00 or later SX801 FW version: 2.10 or later HTTP authentication method: BASIC

---

# Starting and Closing the Application

---

Note: For the camera to be connected, set the username and password beforehand.

For details on how to set the username/password, refer to SX800 Owner's Manual: IP ONVIF Connections.

1. Turn on the camera and computer.
2. Double-click SXController.exe to launch the application.  
The login settings window (Login setting window) is displayed.
3. Select the camera you want to connect to from the list box and press Login.

For the first time only, click Edit button. Set the camera connection data.

CameraName: Set the desired name.

UserName: Enter the username of the camera to be connected.

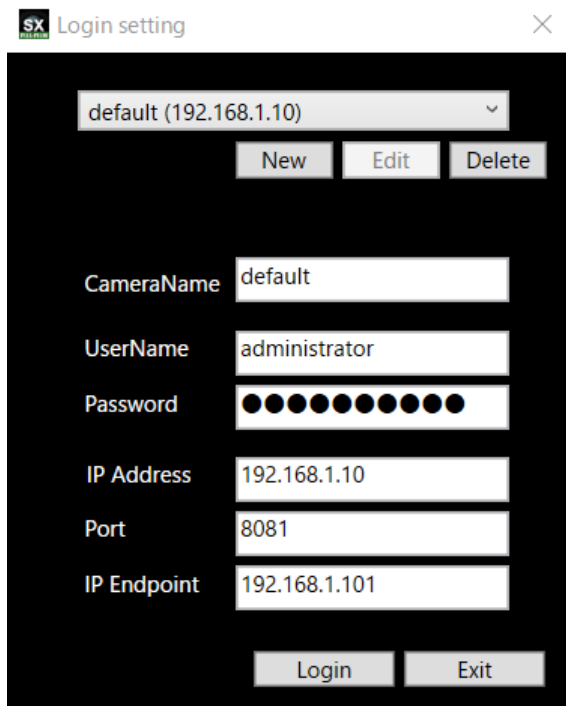
Password: Enter the password of the camera to be connected.

IP Address: Enter the IP address of the camera to be connected.

Port: Enter "8081".

IP Endpoint: Enter the IP address of the client (your PC).

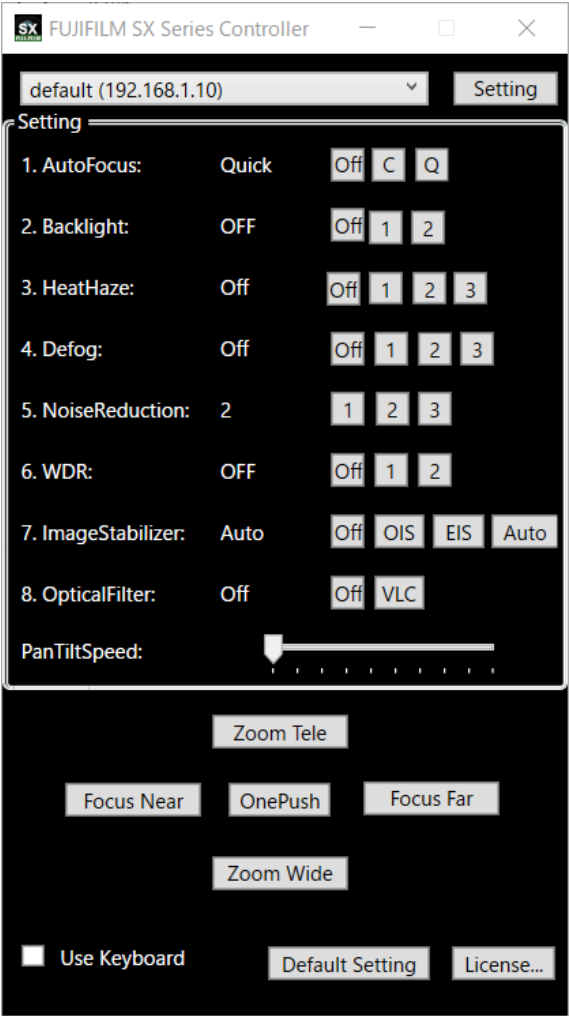
When you have finished typing, press Login.



The screenshot shows the 'Login setting' window. At the top, there is a dropdown menu with 'default (192.168.1.10)' selected. Below the dropdown are three buttons: 'New', 'Edit', and 'Delete'. The main section of the window contains several labeled input fields: 'CameraName' with the value 'default', 'UserName' with 'administrator', 'Password' which is masked with 12 dots, 'IP Address' with '192.168.1.10', 'Port' with '8081', and 'IP Endpoint' with '192.168.1.101'. At the bottom of the window are two buttons: 'Login' and 'Exit'.

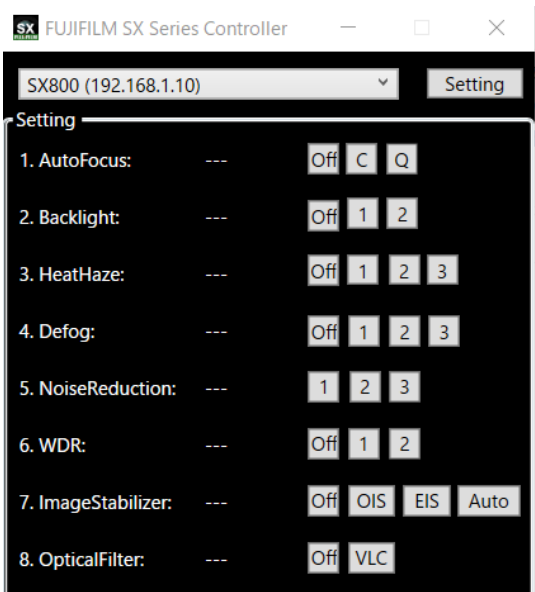
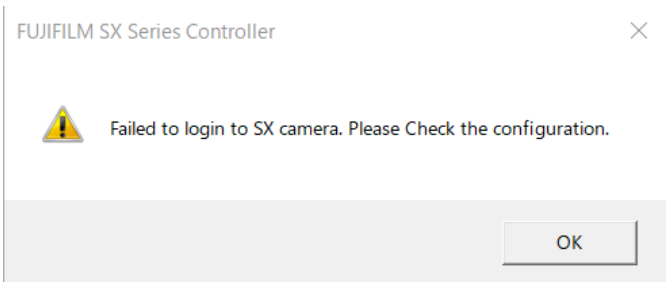
Exit the application by clicking Exit button or the X button in the upper-right corner of the window.

When the camera is successfully connected, the main window (FUJIFILM SX Series Controller window) is displayed. In addition, the status of each setting is displayed.



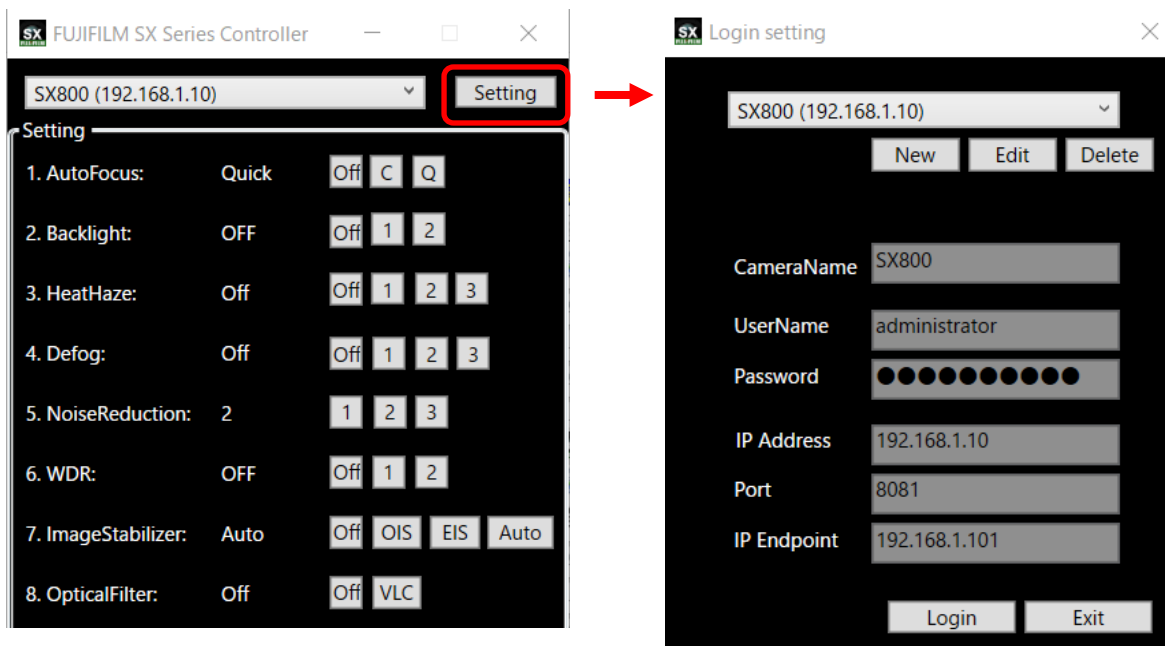
Note: If the connection fails, the following screen is displayed. Confirm the connection with the camera and the connection settings, and then log in again.

- If the IP address is wrong or communication with the camera is not possible, the following dialog appears.
- If the username or password is incorrect, the status of each setting on the main screen is displayed as "---".



# Adding, editing, and deleting cameras

Click Setting in the main window. The login settings window (Login setting window) is displayed.



**Add:** Click the New button.

Set the connection information of the newly connected camera.

CameraName: Set the desired name.

UserName: Enter the username of the camera to be connected.

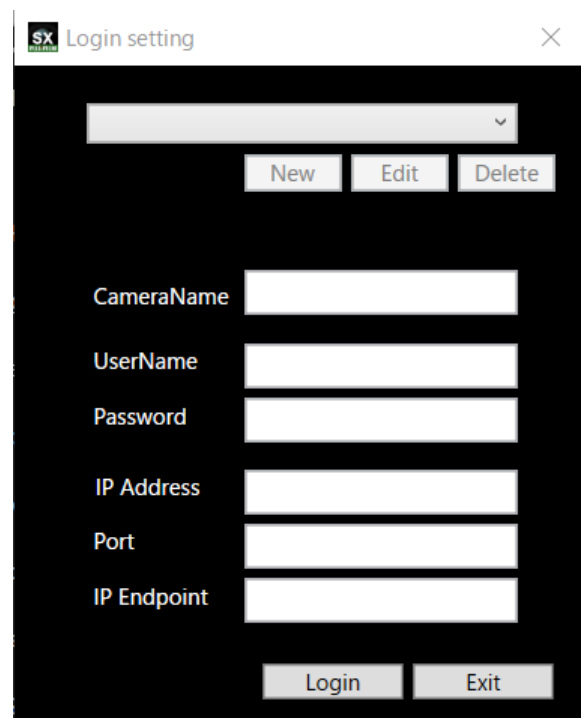
Password: Enter the password of the camera to be connected.

IP Address: Enter the IP address of the camera to be connected.

Port: Enter "8081".

IP Endpoint: Enter the IP address of the client (your PC).

When you have finished typing, press Login.



**Edit:** Select the camera to be edited from the list box and press Edit.

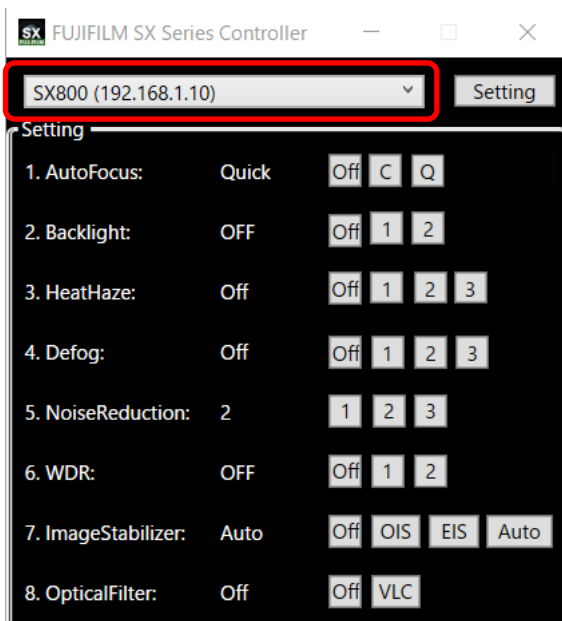
When editing is complete, press Login.

**Delete:** Select the camera to be deleted from the list box and click Delete.

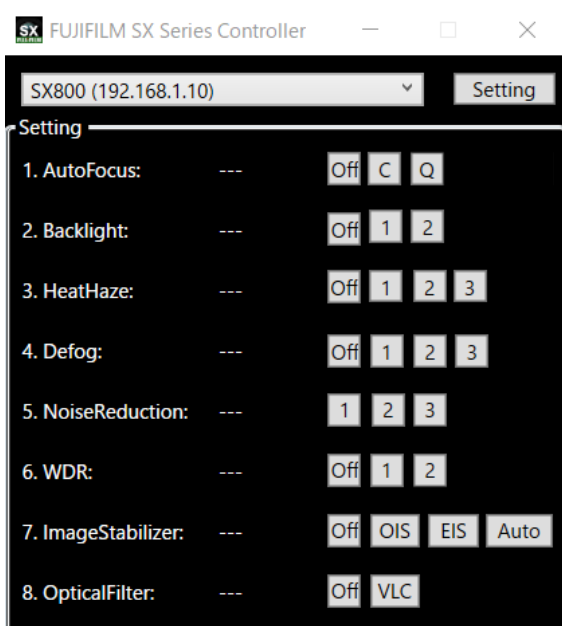
A confirmation dialog is displayed. Click the OK button to delete it.

# Switch Camera

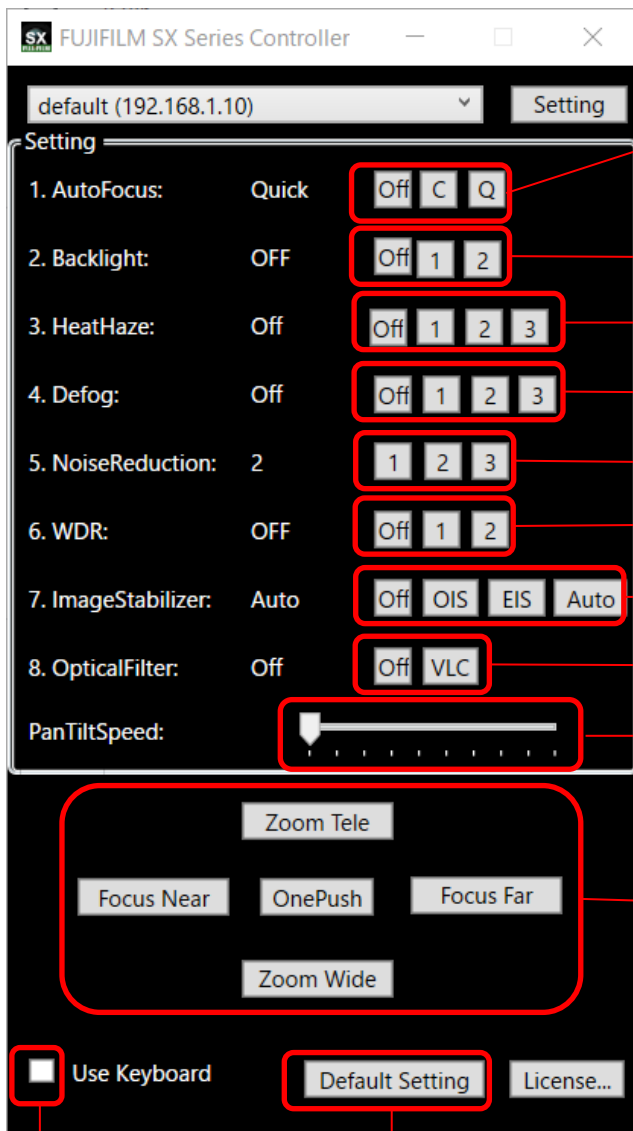
From the main screen, select the camera to connect to from the list box.



Note: If the connection fails, "---" is displayed for the status of the settings.  
Check the connection with the camera and the connection settings.



# Camera operation (UI operation)



AF setting

Note: Press C button to set Continuous AF,  
Press Q button to set Quick AF setting.

Backlight correction

Heat haze reduction

Fog reduction

Noise reduction

Wide dynamic range

Image stabilization

Optical filter

Pan/Tilt Speed

Note: The left side of the slide bar is slow and the  
right side is fast.

Zoom / Focus / One push AF

Default Setting

Note: Restores settings other than Pan/Tilt Speed to defaults.

Keyboard Operation Enable/Disable Switch

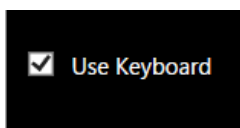
Note: Keyboard operation is enabled when checked.

Note: When Wide dynamic range is enabled, Backlight correction and Fog reduction are fixed to "OFF".  
When Heat haze reduction is enabled, Noise reduction is fixed to "1".

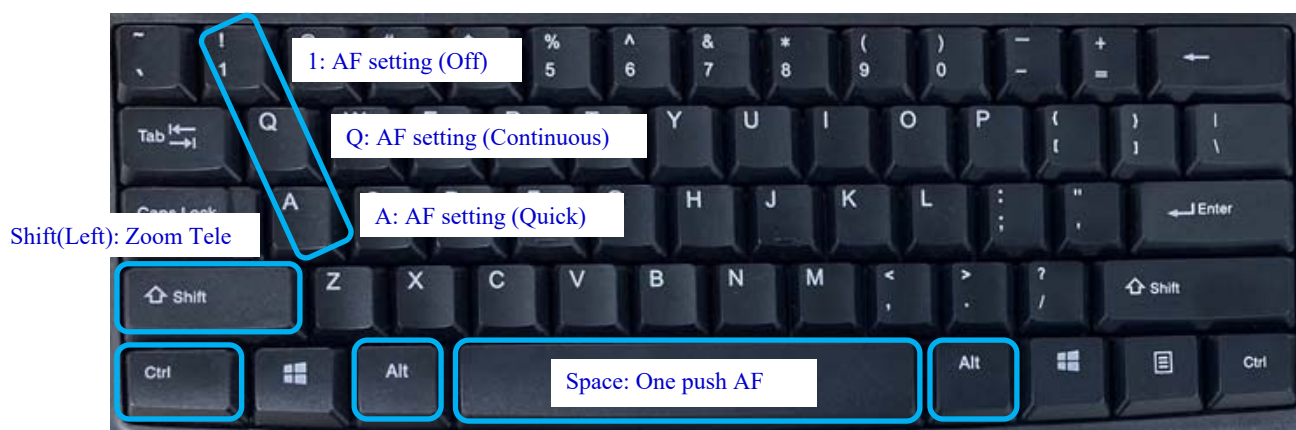


# Camera Operation (Keyboard Operation)

Note: Make sure that the FUJIFILM SX Series Controller application is active or that none of the applications are active.  
If another application is active, the key operation may not work.  
Also, turn on the "Use Keyboard" checkbox.



- Zoom (Tele / Wide)
- One push AF
- Focus (Near / Far)
- AF setting (Off / Continuous / Quick)

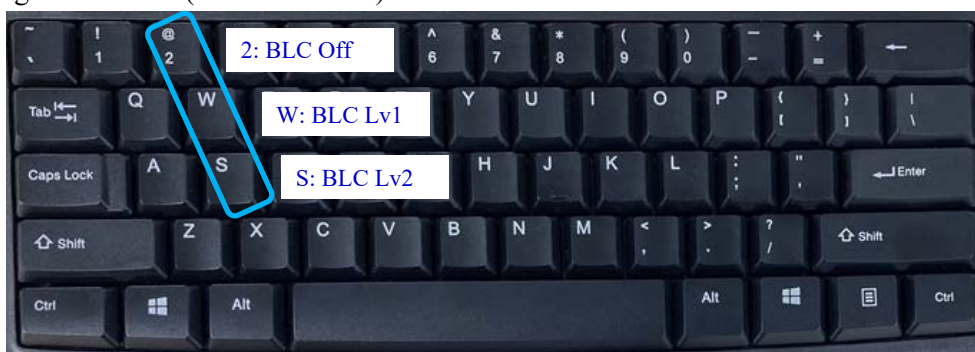


Ctrl(Left): Zoom Wide

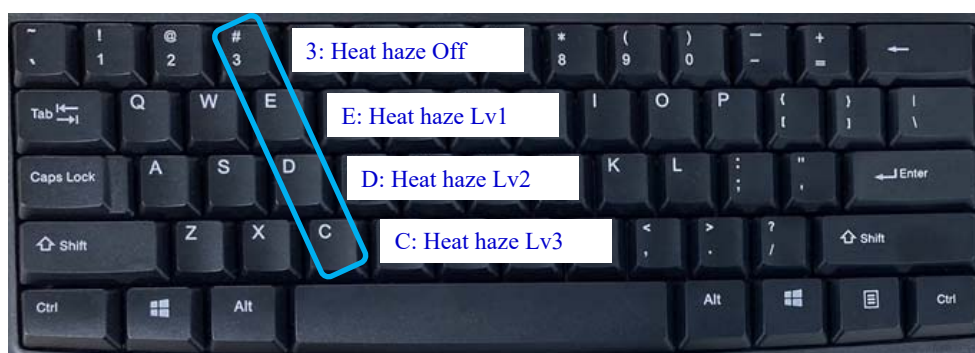
Alt(Left): Focus Near

Alt(Right): Focus Far

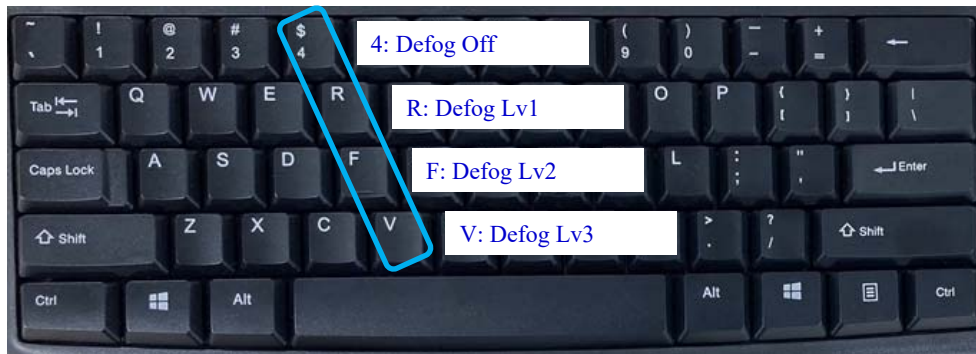
- Backlight correction (Off / Lv1 / Lv2)



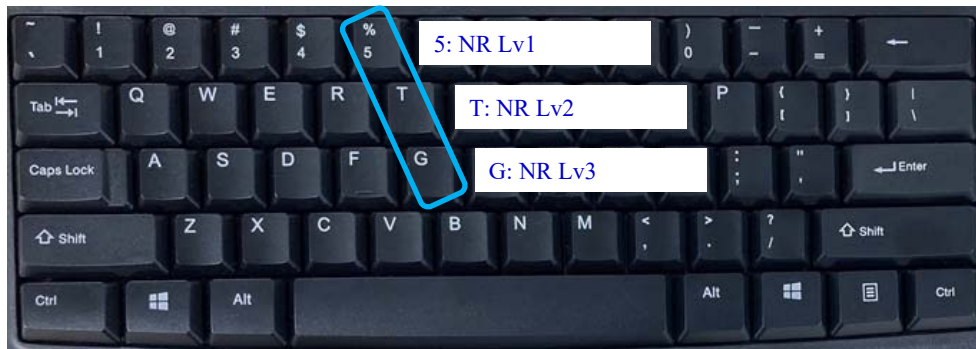
- Heat haze reduction (Off / Lv1 / Lv2 / Lv3)



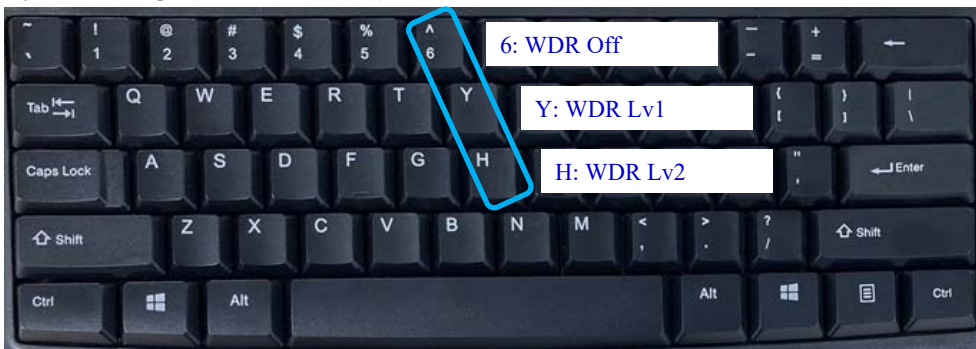
- Fog reduction (Off / Lv1 / Lv2 / Lv3)



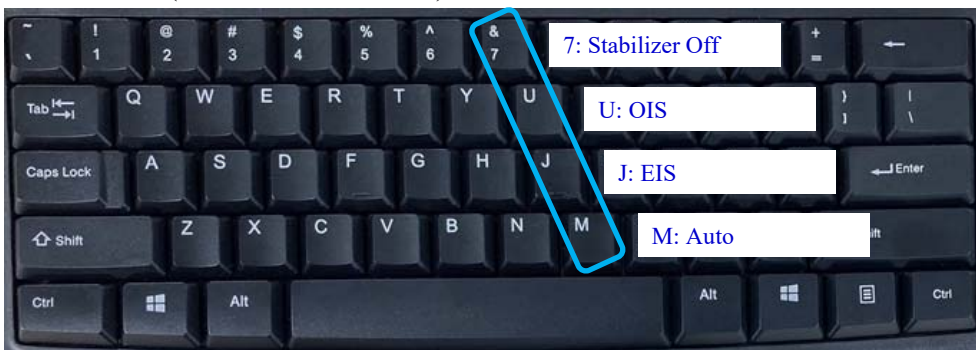
- Noise reduction (Lv1 / Lv2 / Lv3)



- Wide dynamic range (Off / Lv1 / Lv2)



- Image stabilization (Off / OIS / EIS / Auto)



- Optical filter (Off / Visible Light Cut)



- Pan / Tilt

Note: When using the numeric keypad for Pan/Tilt operation, please set NumLock to OFF.



**FUJIFILM**

**FUJIFILM Corporation** 7-3,Akasaka 9-chome,Minato-ku,Tokyo 107-0052,Japan  
<http://www.fujifilm.com/>