

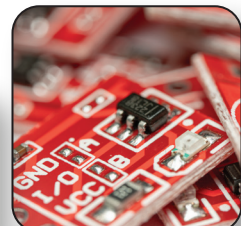
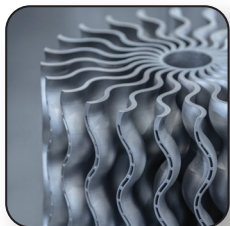


**StarFire**<sup>®</sup>  
Printhead Family



***Unlock the full potential of your next digital inkjet platform.***

The FUJIFILM STARFIRE<sup>®</sup> printhead family delivers comprehensive and versatile solutions for your inkjet development needs in a broad range of industrial applications. The FUJIFILM STARFIRE product portfolio is a path to a productive, reliable, and high quality digital printing system.



# STARFIRE Printhead Features

Built on Fujifilm's long history of piezo development and success in many printing industries, the STARFIRE printhead family delivers high-quality output and durability to meet a range of demanding applications.

## *Exceptional productivity and durability to power your next project*

- 💧 Durable construction for long printhead life
- 💧 REDIJET® ink recirculation for optimal uptime
- 💧 Fully repairable design

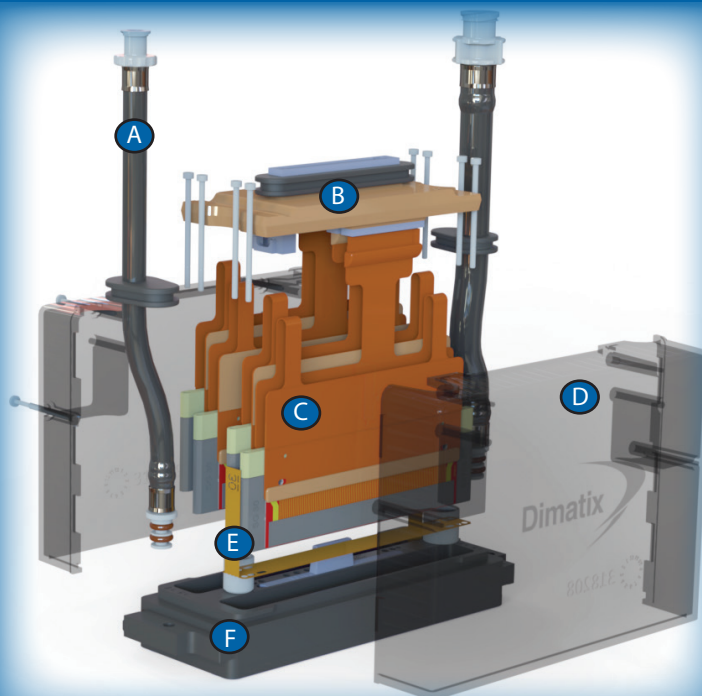
## *Delivering high-quality output for a range of demanding applications*

- 💧 400/600 dpi native resolutions
- 💧 Drop sizes ranging from 8 - 200 pL
- 💧 2-bit greyscale capable
- 💧 High-speed printing with optimal fluid laydown

## *Global technical support*

- 💧 Worldwide coverage
- 💧 Documentation, on-site support and training
- 💧 Tiered services for optimal inkjet integration
- 💧 Emerging application development support

## Fully Repairable Design



- (A) Inlet/outlet tubing
- (B) HIB board
- (C) Jetting array
- (D) Printhead cover
- (E) Filter
- (F) Collar/nozzle plate

*Incorporates FUJIFILM Dimatix patented core technologies*



Scan to learn more!

# STARFIRE Market Highlights

FUJIFILM Dimatix enables high-quality inkjet and functional material deposition in a wide range of markets and applications. Our printheads meet our customers' need for reliable, productive and consistent industrial manufacturing solutions.

## Textiles



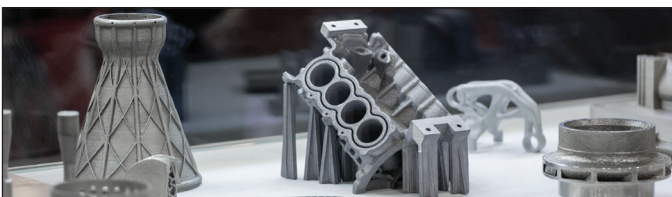
Inkjet printing placements in the textile industry will grow 14% CAGR '19 - '25 (IT Strategies 2021). New creatives and designers are helping to drive demand, attracted by the high quality and creative flexibility of inkjet technologies. FUJIFILM Dimatix serves this market with a portfolio of long-lasting STARFIRE SG1024 & SG600 printheads, which provide global users exceptional quality and robust reliability.

## Packaging



Packaging is moving from mass production to mass customization, enabled by the flexibility and agility of digital printing technology. Demand for product variety, shorter runs and compressed production times are enhancing capabilities across the industry – from corrugated packaging to folding cartons. Flexible, agile, robust FUJIFILM Dimatix's STARFIRE technology stands out when high uptime and output quality rank high with producers.

## Additive Manufacturing



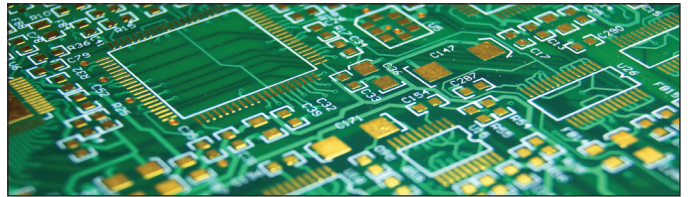
The disruption of manufacturing by 3D printing (a.k.a. additive manufacturing) continues as producers create evermore complex assemblies in a single piece. FUJIFILM Dimatix's robust inkjet technology is used in top polyjet and jet binding applications. Our STARFIRE printheads with VersaDrop jetting technology, deliver drop-size ranges, dot accuracies, and part fidelity demanded by even the newest metals and furan castings.

## Ceramic



Inkjet printing technology has transformed the manufacture of ceramic tile, making possible rapid realistic reproductions of stone, wood or brick surfaces. It can also add realistic texture to the touch. FUJIFILM Dimatix's reliable, productive, industrial-class STARFIRE printheads meet the rigorous industry requirements by producers and OEMs for productivity, reliability, and quality.

## PCB





To meet demand for electronic devices, printed circuit-board manufacturers need speed, automation and flexibility to sustain rapid prototyping, robust performance in custom-batch environments, reliable uptimes and faster times to market. FUJIFILM Dimatix's STARFIRE digital inkjet printheads featuring VersaDrop jetting technology provide all that, and achieve the high accuracy and the quality needed for legend printing and mask patterning.

## Sign & Display



Graphically stunning indoor and outdoor signage and promotion now seem traditional, but leading providers are also looking for improvements in total cost of ownership and durability for their machines. Our STARFIRE printheads using REDIJET and VersaDrop jetting technologies with a wide drop-size range enable quick times to market with robust industrial solutions that keep producers in reliable, sustained production.

# STARFIRE Product Portfolio

Product Family	Printheads	Application	Ink/Fluid Compatibility	Native Resolution				
 <b>SG-1024</b>	SG1024/XSC	Tile decoration	Oil/Solvent	400 dpi				
	SG1024/SC							
	SG1024/MC	Tile decoration, Glazes, Metallic						
	SG1024/LC	Glazes, Englobe, Glue, Ceramic Enamels, Structured Surfaces, Glossy, Luster, Sinking, Anit-Slip, Transparent						
	SG1024/MCHF	Glazes, Metallic						
	SG1024/LCHF	Glazes, Englobe, Glue, Ceramic Enamels, Structured Surfaces, Glossy, Luster, Sinking, Anit-Slip, Transparent						
	SG1024/XSA	Wideformat Graphics, Direct to Fabric, Wraps, PVC, Steel, Alum, KTBoard, Decorative Glass, 1-Way Vision, Sheet			UV curable, Organic/Eco Solvent, Reactive, Acid, Dye Sublimation, Disperse Dye, AQ Pigment, Frit	200 dpi		
	SG1024/SA							
	SG1024/SA2C							
	SG1024/MA	Wideformat Graphics, Direct to Fabric, Wraps, PVC, Steel, Alum, KTBoard, 1-Way Vision, Sheet, Additive Manufacturing					400 dpi	
	SG1024/MA2C	Wideformat Graphics, Direct to Fabric, Wraps, PVC, Steel, Alum, KTBoard, 1-Way Vision, Sheet					200 dpi	
	SG1024/LA	Wideformat Graphics, Direct to Fabric, Steel, Alum, KTBoard, 1-Way Vision, Sheet, Carpet Decoration, Additive Manufacturing					Aqueous, UV curable, Organic/Eco Solvent, Dye Sublimation	400 dpi
	SG1024/LA2Ci	Wideformat Graphics, Direct to Fabric, PVC, Steel, Alum, KTBoard, 1-Way Vision, Sheet, Carpet Decoration						200 dpi
	 <b>SG-600</b>	SG600/XSC					Tile decoration	Oil/Solvent
SG600/SC								
SG600/MC2C		300 dpi						
SG600/XSA		Wideformat Graphics, Direct to Fabric, Wraps, PVC, Steel, Alum, KTBoard, 1-Way Vision, Sheet	Aqueous, UV curable, Organic/Eco Solvent, Dye Sublimation, Aq Frit	600 dpi				
SG600/SA								
SG600/SA2C							300 dpi	



**FUJIFILM**



**Corporate Office:**  
 FUJIFILM Dimatix, Inc.  
 2250 Martin Avenue  
 Santa Clara, CA 95050  
 USA  
 Tel: 1 (408) 565-9150  
 Email: info@dimatix.com

**New Hampshire Facility:**  
 FUJIFILM Dimatix, Inc.  
 109 Etna Road  
 Lebanon, NH 03766  
 USA  
 Tel: 1 (603) 443-5300  
 Email: info@dimatix.com

**Inkjet Business Division:**  
 FUJIFILM Corporation  
 Fujifilm Nishiazabu Bldg.,  
 2-26-30 Nishiazabu  
 Minato-ku, Tokyo 106-0031 Japan  
 Tel: +81 3 6419 0530  
 Email: ff-inkjet@fujifilm.com

**China Office:**  
 FUJIFILM Dimatix China Service Center  
 Building 30, 1000 Jinhai Road  
 Pudong New Area, Shanghai  
 China 201206  
 Email: china@dimatix.com

**Europe Office:**  
 Email: euro@dimatix.com

**Korea Office:**  
 Email: mdkorea@dimatix.com

**Singapore Office:**  
 Email: mdsingapore@dimatix.com

**Taiwan Office:**  
 Email: mdtaiwan@dimatix.com