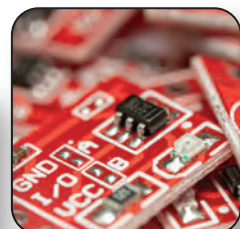
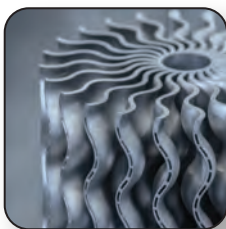




Unlock the full potential of your next digital inkjet platform.

The FUJIFILM STARFIRE® printhead family delivers comprehensive and versatile solutions for your inkjet development needs in a broad range of industrial applications. The FUJIFILM STARFIRE product portfolio is a path to a productive, reliable, and high quality digital printing system.



STARFIRE Printhead Features

Built on Fujifilm's long history of piezo development and success in many printing industries, the STARFIRE printhead family delivers high-quality output and durability to meet a range of demanding applications.

Exceptional productivity and durability to power your next project

- 💧 Durable construction for long printhead life
- 💧 REDIJET® ink recirculation for optimal uptime
- 💧 Fully repairable design

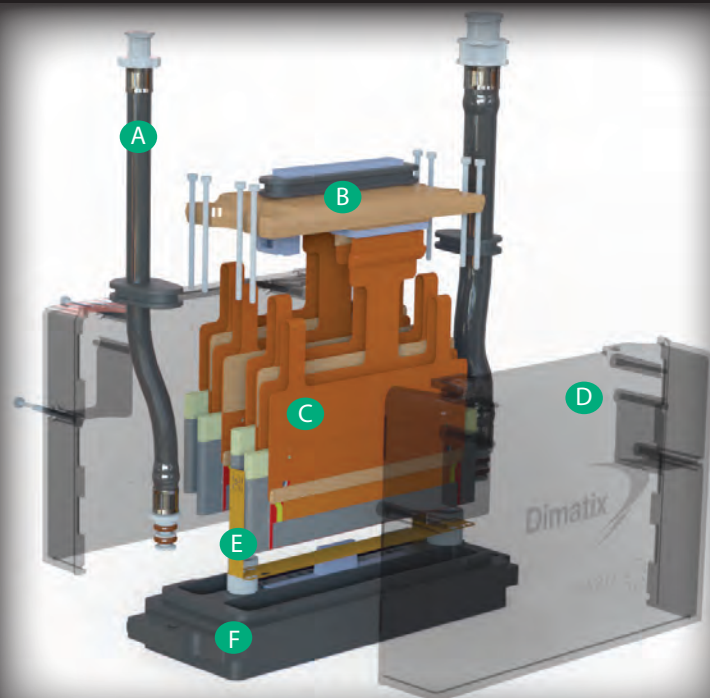
Delivering high-quality output for a range of demanding applications

- 💧 400/600 dpi native resolutions
- 💧 Drop sizes ranging from 8 - 200 pL
- 💧 2-bit greyscale capable
- 💧 High-speed printing with optimal fluid laydown

Global technical support

- 💧 Worldwide coverage
- 💧 Documentation, on-site support and training
- 💧 Tiered services for optimal inkjet integration
- 💧 Emerging application development support

Fully Repairable Design



- | | |
|-----------------------|-----------------------|
| A Inlet/outlet tubing | D Printhead cover |
| B HIB board | E Filter |
| C Jetting array | F Collar/nozzle plate |

Incorporates FUJIFILM Dimatix patented core technologies

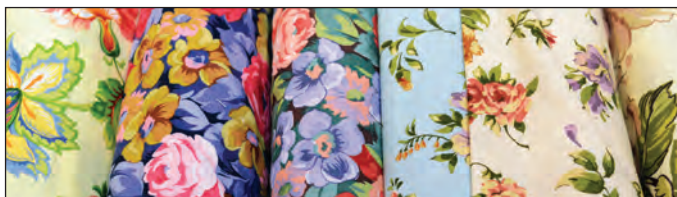


Scan to learn more!

STARFIRE Market Highlights

FUJIFILM Dimatix enables high-quality inkjet and functional material deposition in a wide range of markets and applications. Our printheads meet our customers' need for reliable, productive and consistent industrial manufacturing solutions.

Textiles



Inkjet printing placements in the textile industry will grow 14% CAGR '19 - '25 (IT Strategies 2021). New creatives and designers are helping to drive demand, attracted by the high quality and creative flexibility of inkjet technologies. FUJIFILM Dimatix serves this market with a portfolio of long-lasting STARFIRE SG1024 & SG600 printheads, which provide global users exceptional quality and robust reliability.

Packaging



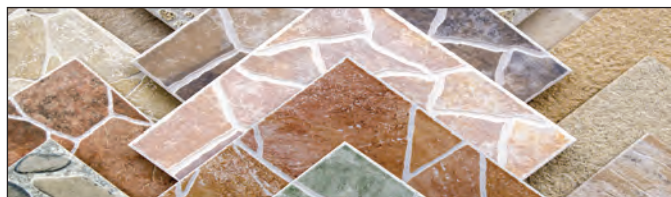
Packaging is moving from mass production to mass customization, enabled by the flexibility and agility of digital printing technology. Demand for product variety, shorter runs and compressed production times are enhancing capabilities across the industry – from corrugated packaging to folding cartons. Flexible, agile, robust FUJIFILM Dimatix's STARFIRE technology stands out when high uptime and output quality rank high with producers.

Additive Manufacturing



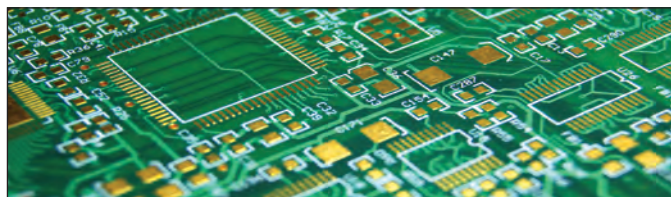
The disruption of manufacturing by 3D printing (a.k.a. additive manufacturing) continues as producers create evermore complex assemblies in a single piece. FUJIFILM Dimatix's robust inkjet technology is used in top polyjet and jet binding applications. Our STARFIRE printheads with VersaDrop jetting technology, deliver drop-size ranges, dot accuracies, and part fidelity demanded by even the newest metals and furan castings.

Ceramic



Inkjet printing technology has transformed the manufacture of ceramic tile, making possible rapid realistic reproductions of stone, wood or brick surfaces. It can also add realistic texture to the touch. FUJIFILM Dimatix's reliable, productive, industrial-class STARFIRE printheads meet the rigorous industry requirements by producers and OEMs for productivity, reliability, and quality. Now compatible with both solvent/oil based and water based ceramic fluids.

PCB





To meet demand for electronic devices, printed circuit-board manufacturers need speed, automation and flexibility to sustain rapid prototyping, robust performance in custom-batch environments, reliable uptimes and faster times to market. FUJIFILM Dimatix's STARFIRE digital inkjet printheads featuring VersaDrop jetting technology provide all that, and achieve the high accuracy and the quality needed for legend printing and mask patterning.

Sign & Display



Graphically stunning indoor and outdoor signage and promotion now seem traditional, but leading providers are also looking for improvements in total cost of ownership and durability for their machines. Our STARFIRE printheads using REDIJET and VersaDrop jetting technologies with a wide drop-size range enable quick times to market with robust industrial solutions that keep producers in reliable, sustained production.

STARFIRE Product Portfolio

| Product Family | Printheads | Application | Ink/ Fluid Compatibility | Native Resolution |
|--|--------------|---|---|-------------------|
|  SG1024 | SG1024/XSC | Tile decoration | Oil/ Solvent | 400 dpi |
| | SG1024/SC | | | |
| | SG1024/MC | Tile decoration, Glazes, Metallic | | |
| | SG1024/LC | Glazes, Englobe, Glue, Ceramic Enamels, Strucured Surfaces, Glossy, Luster, Sinking, Anit-Slip, Transparent | | |
| | SG1024/MCHF | Tile decoration, Glazes, Metallic | | |
| | SG1024/LCHF | Glazes, Englobe, Glue, Ceramic Enamels, Strucured Surfaces, Glossy, Luster, Sinking, Anit-Slip, Transparent | | |
| | SG1024/AQMH | Tile decoration, Glazes, Metallic | ★ NEW ★ Aqueous Ceramic | |
| | SG1024/AQLH | Glazes, Englobe, Glue, Ceramic Enamels, Strucured Surfaces, Glossy, Luster, Sinking, Anit-Slip, Transparent | | |
| | SG1024/XSA | Wideformat Graphics, Direct to Fabric, Wraps, PVC, Steel, Alum, KTBoard, Decorative Glass, 1-Way Vision, Sheet | UV curable, Organic/ Eco Solvent, Reactive, Acid, Dye Sublimation, Disperse Dye, AQ Pigment, Frit | 200 dpi |
| | SG1024/SA | | | |
| | SG1024/SA2C | | | |
| | SG1024/MA | Wideformat Graphics, Direct to Fabric, Wraps, PVC, Steel, Alum, KTBoard, 1-Way Vision, Sheet, Additive Manufacturing | | 400 dpi |
| | SG1024/MA2C | Wideformat Graphics, Direct to Fabric, Wraps, PVC, Steel, Alum, KTBoard, 1-Way Vision, Sheet | 200 dpi | |
| | SG1024/LA | Wideformat Graphics, Direct to Fabric, Steel, Alum, KTBoard, 1-Way Vision, Sheet, Carpet Decoration, Additive Manufacturing | Aqueous, UV curable, Organic/ Eco Solvent, Dye Sublimation | 400 dpi |
| | SG1024/LA2Ci | Wideformat Graphics, Direct to Fabric, PVC, Steel, Alum, KTBoard, 1-Way Vision, Sheet, Carpet Decoration | | 200 dpi |
|  SG600 | SG600/XSC | Tile decoration | Oil/ Solvent | 600 dpi |
| | SG600/SC | | | |
| | SG600/MC2C | | | 300 dpi |
| | SG600/XSA | Wideformat Graphics, Direct to Fabric, Wraps, PVC, Steel, Alum, KTBoard, 1-Way Vision, Sheet | Aqueous, UV curable, Organic/ Eco Solvent, Dye Sublimation, Aq Frit | 600 dpi |
| | SG600/SA | | | |
| | SG600/SA2C | | | 300 dpi |



Corporate Office:
FUJIFILM Dimatix, Inc.
2250 Martin Avenue
Santa Clara, CA 95050
USA
Tel: 1 (408) 565-9150
Email: info@dimatix.com

New Hampshire Facility:
FUJIFILM Dimatix, Inc.
109 Etna Road
Lebanon, NH 03766
USA
Tel: 1 (603) 443-5300
Email: info@dimatix.com

Inkjet Business Division:
FUJIFILM Corporation
Fujifilm Nishiazabu Bldg.,
2-26-30 Nishiazabu
Minato-ku, Tokyo 106-0031 Japan
Tel: +81 3 6419 0530
Email: ff-inkjet@fujifilm.com

China Office:
FUJIFILM Dimatix China Service Center
Building 30, 1000 Jinhai Road
Pudong New Area, Shanghai
China 201206
Email: china@dimatix.com

Europe Office:
Email: euro@dimatix.com

Korea Office:
Email: mdkorea@dimatix.com

Singapore Office:
Email: mdsingapore@dimatix.com

Taiwan Office:
Email: mdtaiwan@dimatix.com