

FUJIFILM NATIVE FULL HD Video Controller with USB

The FUJIFILM FULL HD Video Processor is equipped with the latest sensor technology providing the high-quality FULL HD images you would expect from FUJIFILM, an imaging company. Automatic gain control and pixel compensation, combined with a unique combination of video processing algorithms such as Selective Color Enhancement (SCE), Smoke Reduction, Grid Removal and Clear View are designed to deliver representations of vessels and tissue structures.

In addition to image quality, the FUJIFILM FULL HD Video Processor has multi-camera connectivity, optimized camera pre-sets for specific specialties, such as laparoscopy, arthroscopy, gynecology to name a few and the proprietary FUJIFILM MIS-Bus interface and a simple USB connection.



Shown with LED Light Source

PRODUCT FEATURES

Outstanding performance

- Edge enhancement, automatic gain control (AGC) and dynamic contrast function for the best in class performance
- Latest Image sensor technology offers: excellent FULL HD image quality, no pixel errors due to automatic pixel defect compensation
- Selective Color Enhancement (SCE) - for a much improved representation of the vessels and the tissue structure.
- Smoke reduction - for a better view during dissection technologies (e.g. HF)
- Grid removal - reduces the honeycomb structure of image bundle endoscopes
- Clear view - clears the view if liquid is blurry

Operational Efficiency

- Multi-Camera connectivity
- Optimized settings for specialty (laparoscopy, arthroscopy, gynecology, urology, ENT, fiberscopes, neuroendoscopy)
- Camera head FULL HD zoom
- Camera head FULL HD fix focal length
- Camera head FULL HD 90° angled
- FUJIFILM MIS-Bus interface for direct light source control via camera head
- FULL HD image capturing via USB

Video Controller with USB

SPECIFICATIONS

DESCRIPTION	PRODUCT NUMBER
FULL HD with USB image capture and algorithms	95-3930

TECHNICAL DATA	
Operation control panel	On-Off, menu, white balance, photo
Video outputs	High definition: 2 x DVI (1080p), 2 x HD-SDI (1080i)
Remote outputs	2 x 3.5 mm phone jack connectors (to connect recording/printer devices)
Remote inputs	2 x 3.5 mm phone jack connectors (to connect a foot control switch)
Connectivity	FUJIFILM MIS-Bus interface
Dimensions / Weight	295 x 100 x 355 mm (W x H x D) / 4.39 kg

SYSTEM	
Standard compliance	IEC 60601-1 2nd and 3rd
Directive compliance	CE-mark
Power connection	100 - 240 V AC, 50/60 Hz
Power consumption	0.8 - 0.4 A

ACCESSORIES/DESCRIPTION	PRODUCT NUMBER
USB Drive 16 GB	DTIG4/16GBCL
USB Medical Keyboard FlexiVision, US layout	PS00511
Foot Control Switch 1 pole, momentary mono jack plug with IPX	76226-ACAA-BZZZ-002
Sterilization Tray for Camera Heads	95-4860

FUJIFILM NATIVE FULL HD Video Controller with Image Color Enhancement

The FUJIFILM FULL HD Video Processor is equipped with the latest sensor technology providing the high-quality FULL HD images you would expect from FUJIFILM, and imaging company. Automatic gain control and pixel compensation, combined with a unique combination of video processing algorithms with Picture out of Picture mode (POP), such as Color Shift 1+2, Selective Color Enhancement (SCE), Smoke Reduction, Grid removal and Clear View are designed to deliver representations of vessels and tissue structures. This controller also affords full HD image capturing via USB.

In addition to image quality, the FUJIFILM HD Video Processor has multi-camera connectivity, optimized camera pre-sets for specific specialties, such as laparoscopy, arthroscopy, gynecology to name a few and the proprietary FUJIFILM MIS-Bus interface and simple USB connection.



PRODUCT FEATURES

Multi-connectivity

- Camera heads: Full HD zoom, Full HD fi x focal length, Full HD 90° angled
- Camera head Full HD 3CMOS zoom
- Camera handpiece pen-shape, Full HD with integrated LED illumination, for use with exchangeable endoscope probes

Video algorithms – with Picture out of Picture mode (POP)

- Color Shift 1 + 2 – spectral colors can be shifted and exchanged in order to enhance vessels and tissue structures
- Selective Color Enhancement (SCE) – for a much improved representation of the vessels and the tissue structure
- Smoke reduction – for a better view during dissection technologies (e.g. HF)
- Grid removal – reduces the honeycomb structure of image bundle endoscopes

Time saving and useful camera presets

- Optimized settings for laparoscopy, arthroscopy, gynecology, urology, ENT, fiberscopes, neuroendoscopy

FUJIFILM MIS-Bus interface for direct light source control via camera head

- Automatic light control in combination with FUJIFILM High Power 300 LED light source

FUJIFILM NATIVE FULL HD SPECIFICATIONS

DESCRIPTION	PRODUCT CODE
-------------	--------------

Controller Full HD USB Image Capture	95-3960
--------------------------------------	---------

TECHNICAL DATA

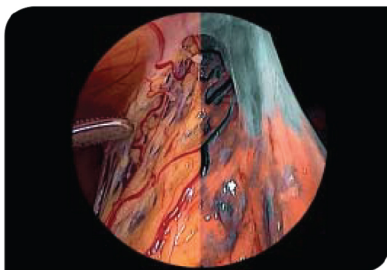
Operation control panel	On-Off, menu, white balance, photo
Video outputs	High definition: 2 x DVI (1080p), 2 x 3G-SDI (1080i)8
Interfaces Remote outputs	2 x 3.5 mm phone jack connectors (to connect recording / printer devices)
Interfaces Remote inputs	2 x 3.5 mm phone jack connectors (to connect a foot control switch)
Interfaces USB Keyboard / USB Drive	2 x USB (to connect a foot control switch)
Connectivity	FUJIFILM MIS-Bus interface
Dimensions / Weight	295 x 100 x 355 mm (W x H x D) / approx. 5.7 kg

SYSTEM

Standard compliance	IEC 60601-1
Electromagnetic compatibility	IEC/EN 60601-1-2
Directive compliance	CE-mark
Supply voltage	100 - 240V~, 50 / 60Hz
Current consumption	0.8 - 0.4 A
Protection class as per IEC 60601-1	Protection class I
Degree of protection	IP 21
Classification as per Directive 93 / 42 / EEC	Class I medical device
Classification as per IEC / CISPR 11	Group 1 Class B

PLEASE SEE ADDITIONAL DATA SHEETS

FUJIFILM NATIVE FULL HD Camera Head (Zoom, Fixed focal length and 90°angled) | FUJIFILM NATIVE FULL HD 3CMOS Camera Head |
FUJIFILM HIGH POWER 300 LED Light Source



Video algorithms (e.g. Color Shift1)