

FUJIFILM

INSTRUCTION MANUAL

**CREATIVE DUPLEX PRINTER
CX3240**

PRINTER DRIVER SOFTWARE (WINDOWS)

First Edition

Ref. No. CP2-B21820J1-1

CONTENTS

1. System Requirements	2
2. Download or Insert CD for Launcher	2
3. Print Driver Installation	3
4. Paper/Media Settings	5

1. System Requirements

1.1 This Printer Driver Software supports **Windows 7** (32-bit or 64-bit); **Windows 8** (32-bit or 64-bit); or **Windows 10** (32-bit or 64-bit) operating systems.

1.2 Technical Notation: Always attempt to batch orders to 50 pages or less, due to memory constraints within the printer. If **Hard Drive Full** error occurs, reduce batch size, or adjust file(s) size down.

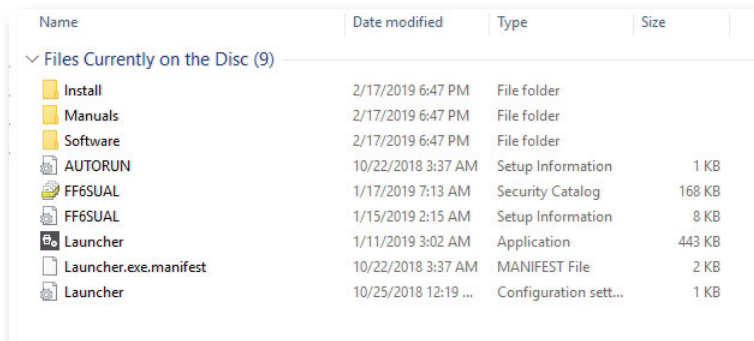
1.3 Printer Connection: Connect the power cable, Ethernet or USB cable and **complete** the printer initial setup **prior** to installing the driver.

2. Download or Insert CD for Launcher

2.1 Insert CD and browse to it, or the unzipped folder of the downloaded files.

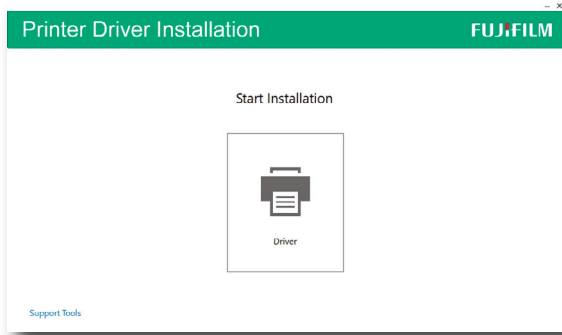
2.2 Double click **Launcher**.

NOTE: If you get a Window permission prompt select **Allow**.

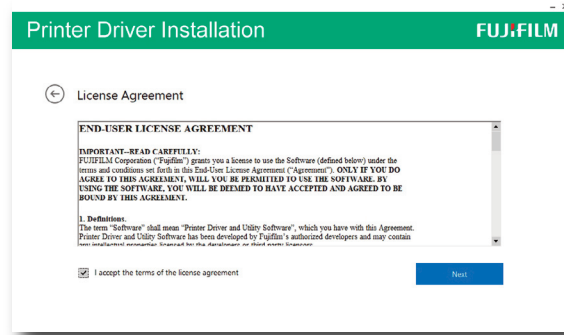


3. Printer Driver Installation

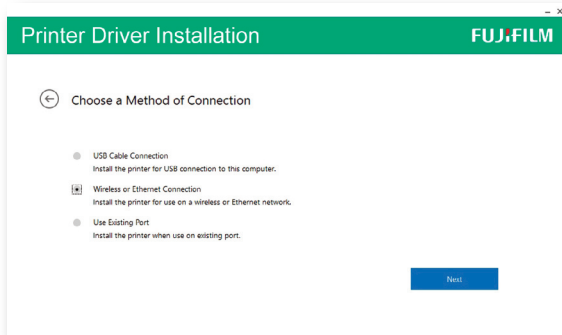
3.1. Select Start Installation.



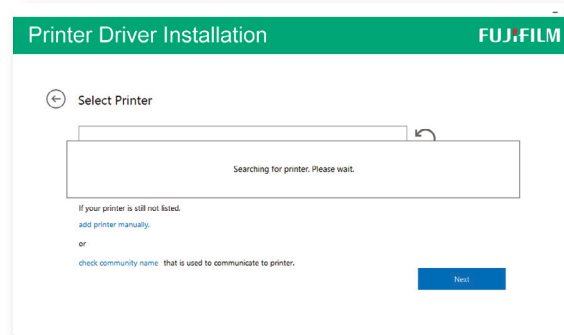
3.2. End User License Agreement. Check the box "I accept the terms of the license agreement" and select Next button.



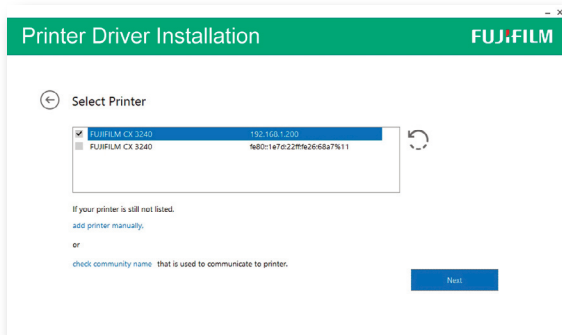
3.3. Select Wireless or Ethernet Connector radio button. Select Next.



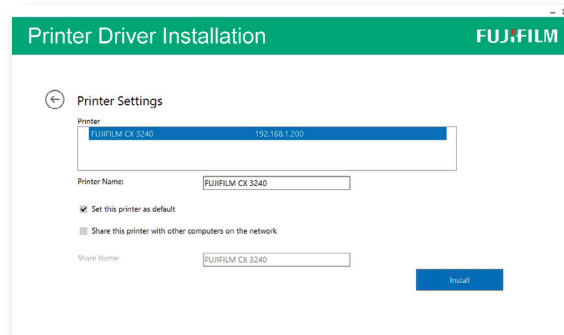
3.4. Wait as the print driver automatically finds the printer. Once found, you will see the printer listed on this screen.



3.5. Check the box with the printer that matches the default IP Address or IP Address that you have set your printer to, for example 192.168.1.200.

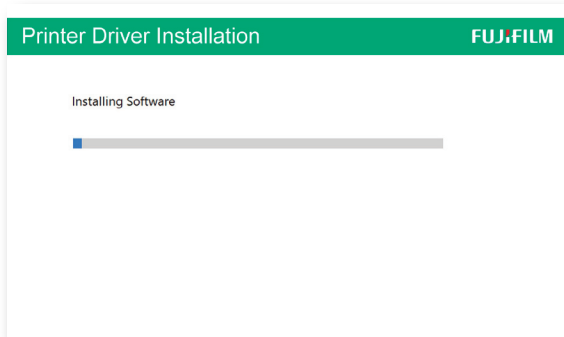


3.6. If desired check the box: Set the printer as default.

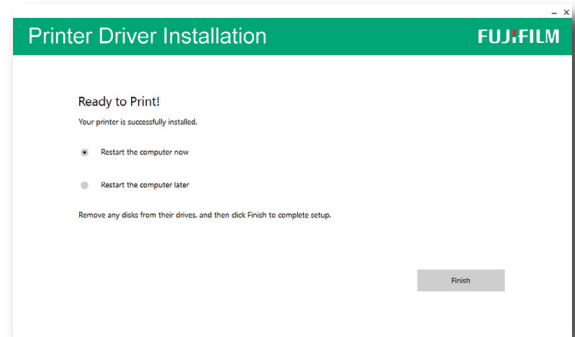


3. Printer Driver Installation

3.7. Wait for the installation of the driver to finish.



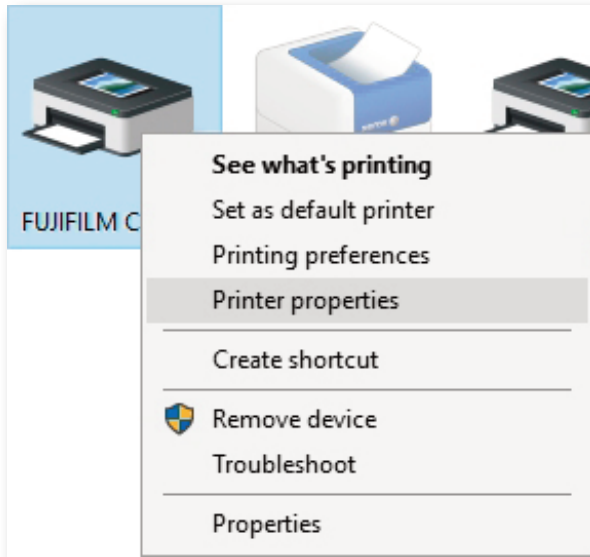
3.8. Restart computer.



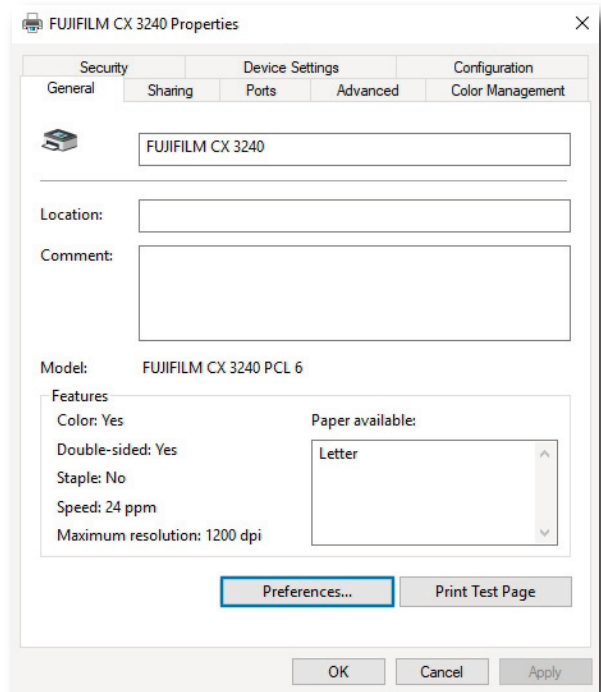
4. Paper/Media Settings

4.1. Proceed to **Control Panel/All Control Panel Items/Devices and Printers and CX3240** for set up of the CX3240 Windows Driver.

Highlight **FUJIFILM CX3240** and Right Click: Select **Printer Properties**.

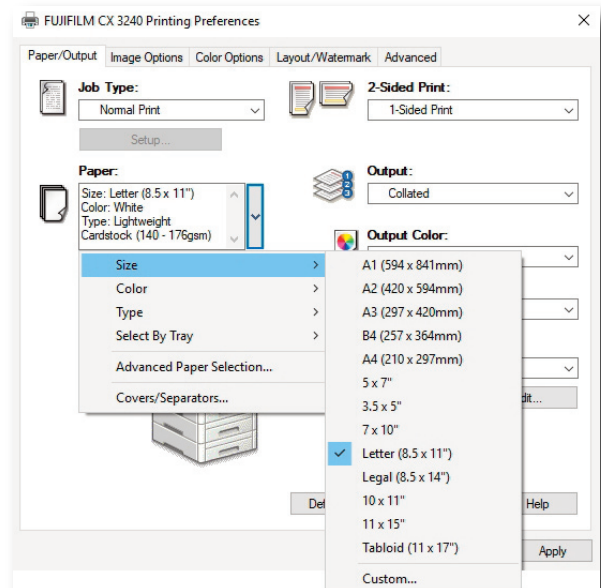


4.2. From the Printer Properties **General** tab select **Preferences**.



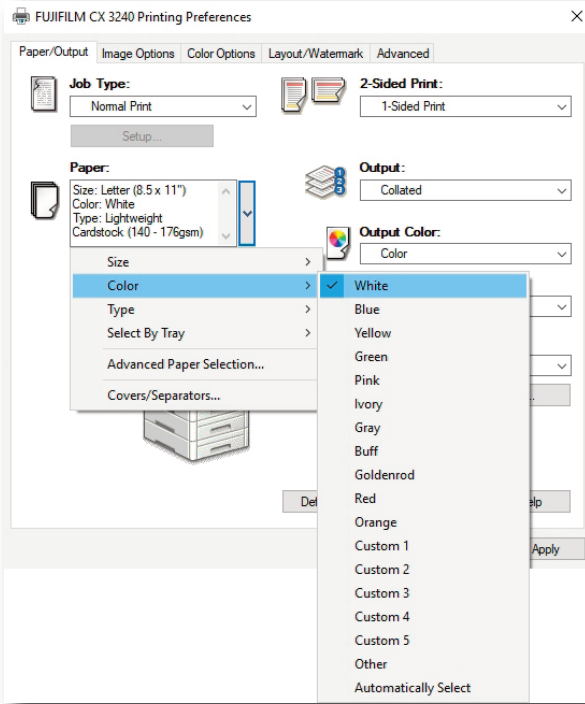
To set for a new paper size the following process must be repeated for each size.
Steps 4.3-4.31

4.3. In **Paper** drop down, change to new print size **8.5x11**.

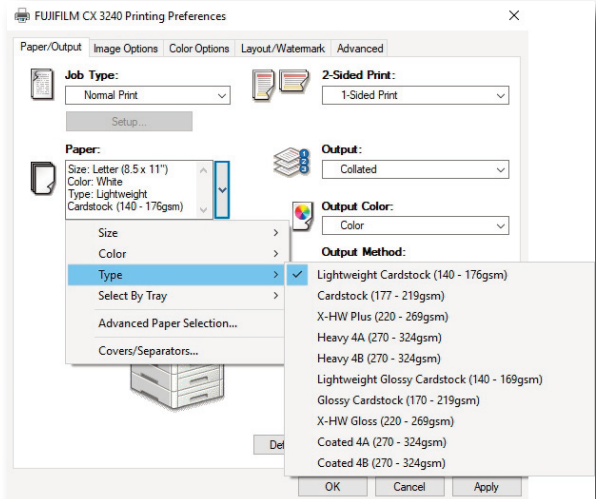


4. Paper/Media Settings

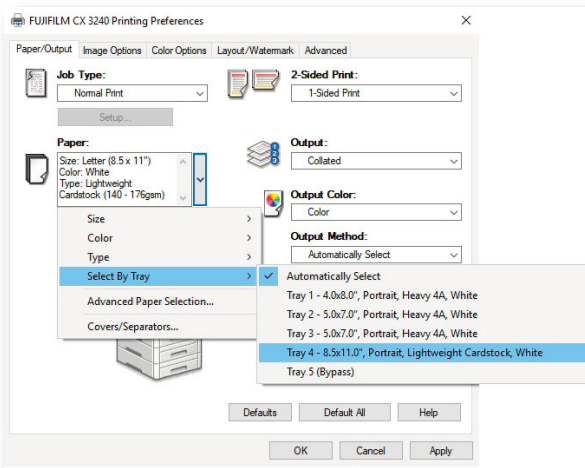
4.4. In **Paper** drop down, change **Color** to **White**.



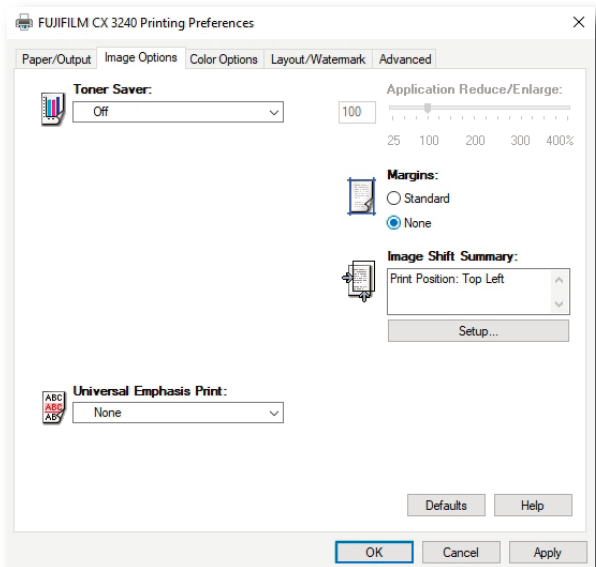
4.5. In **Paper** drop down, change **Type** to **Lightweight Cardstock** to match 8.5x11.



4.6. In **Paper** drop down, change **Select by Tray** to **Tray 4**, corresponding to 8.5x11.

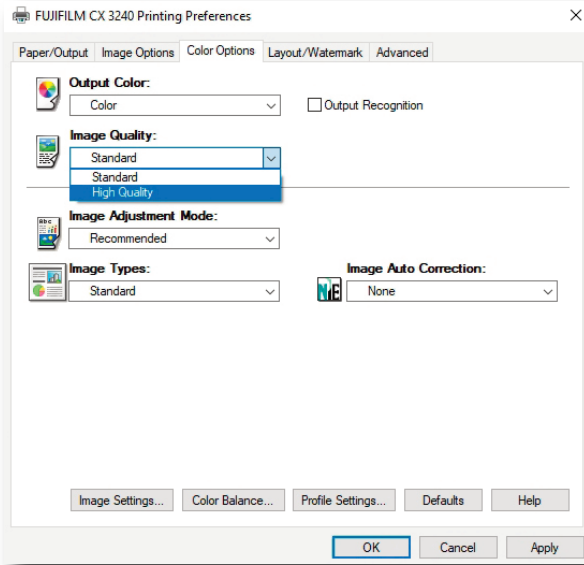


4.7. Select **Image Options** tab, under **Margins** be sure to set the radio button to **None**.

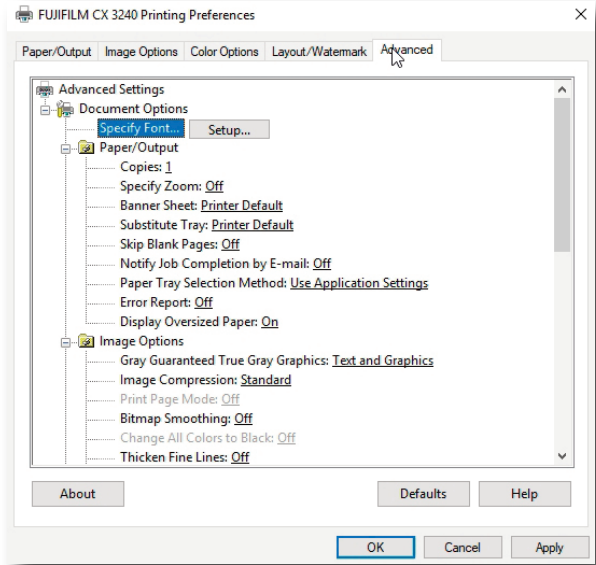


4. Paper/Media Settings

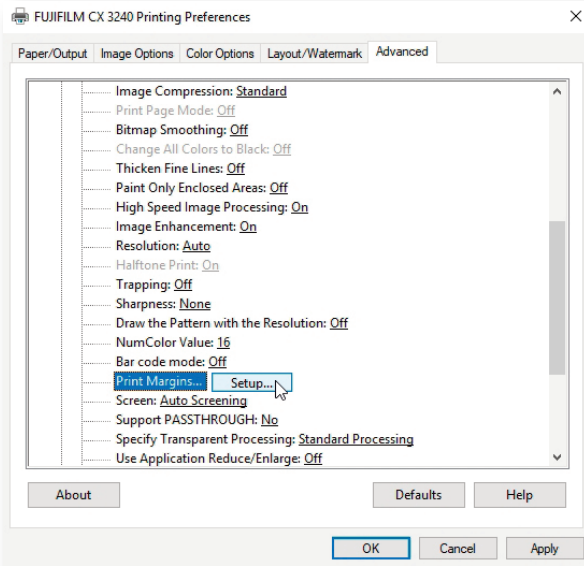
4.8. Select **Color Options** tab, set **Image Quality** to your preference to either **Standard** or **High Quality**.



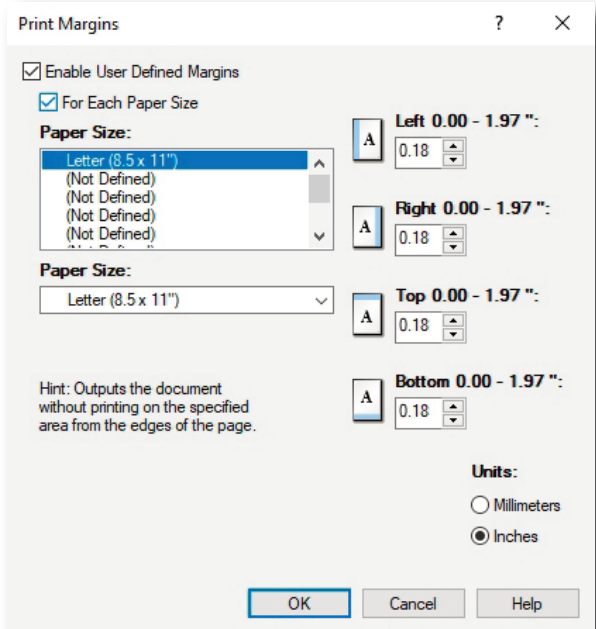
4.9. Select **Advanced** tab.



4.10. Scroll down to **Print Margins**, highlight and click **Setup**.

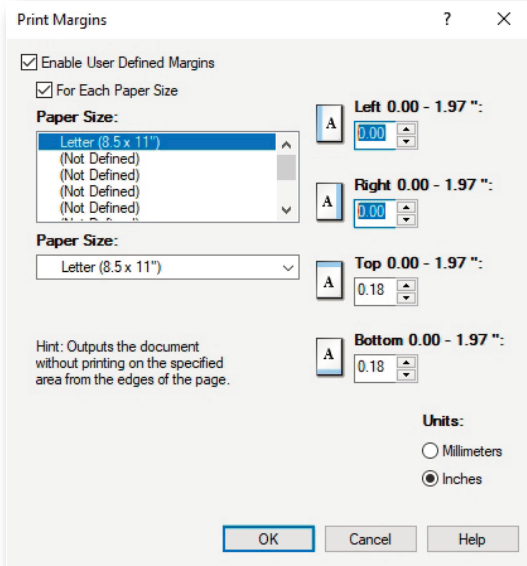


4.11. In the **Print Margins** dialog box, check **Enable User Defined Pages** and **For Each Paper Size**.

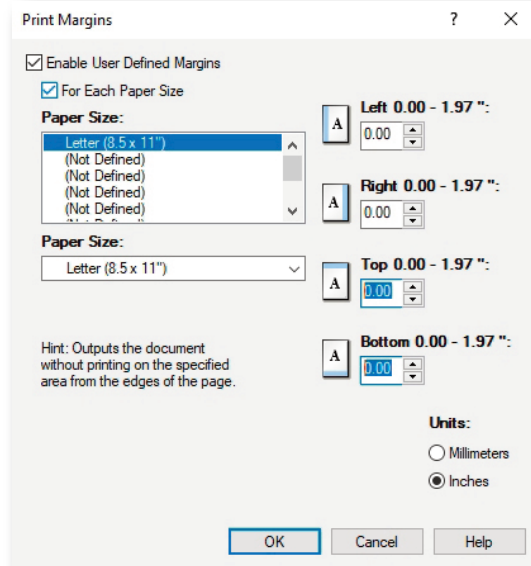


4. Paper/Media Settings

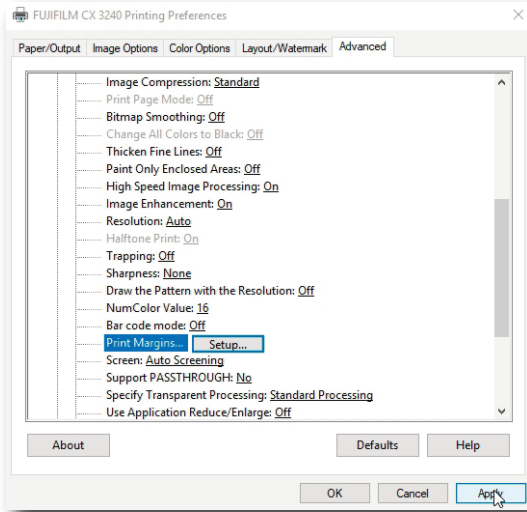
4.12. Select **Left Margin**, set to **0.00"**
 Select **Right Margin**, set to **0.00"**



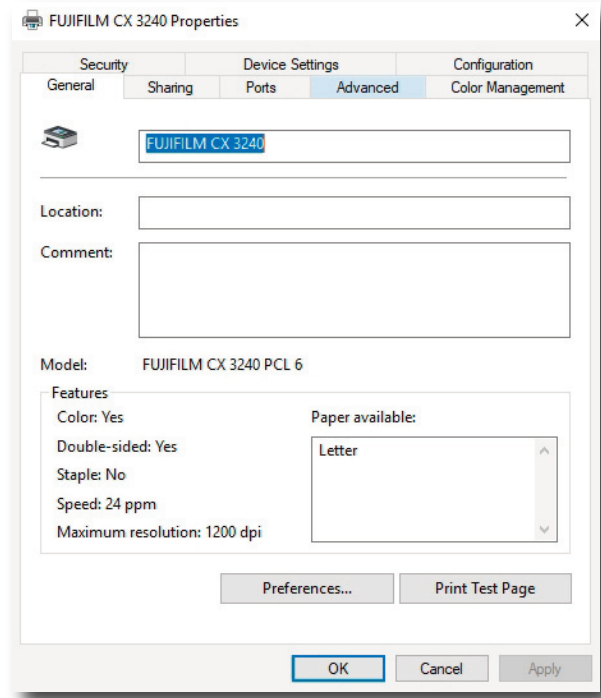
4.13. Select **Top Margin**, set to **0.00"**
 Select **Bottom Margin**, set to **0.00"**



4.14. Select **OK**. Then **Apply** on CX3240
 Printing Preferences.

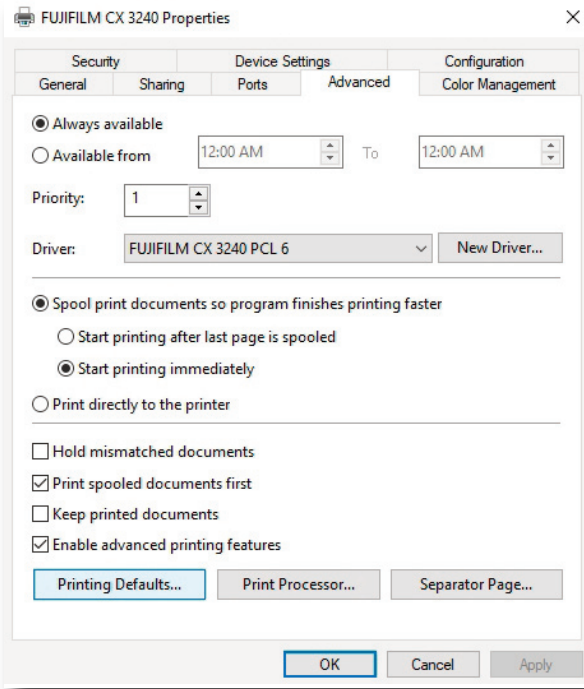


4.15. Select **OK** on CX3240 Properties dialog box
Advanced tab.

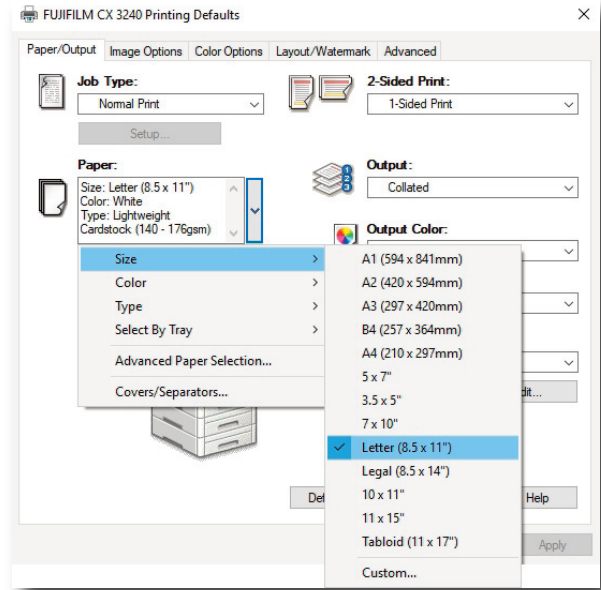


4. Paper/Media Settings

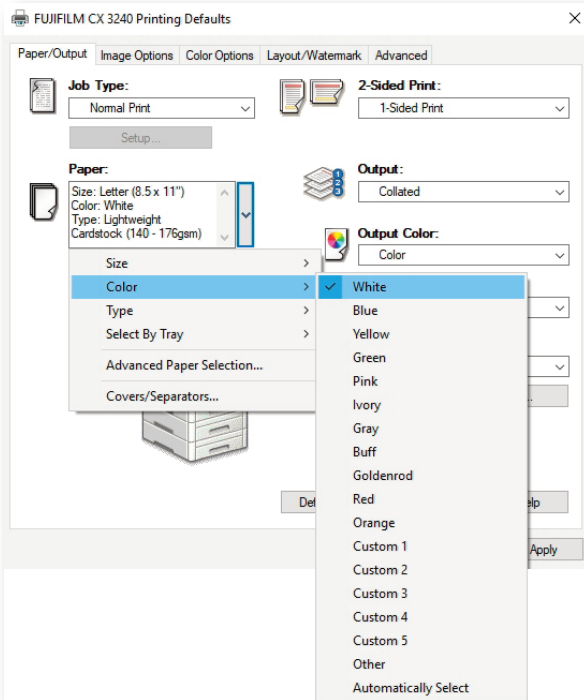
4.16. Select Printing Defaults.



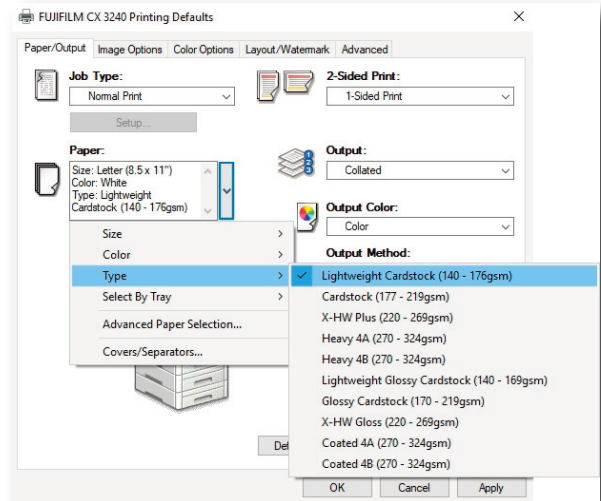
4.17. In **Paper** drop down, repeat process of selecting **Size 8.5x11**.



4.18. In **Paper** drop down, repeat process of selecting **Color to White**.

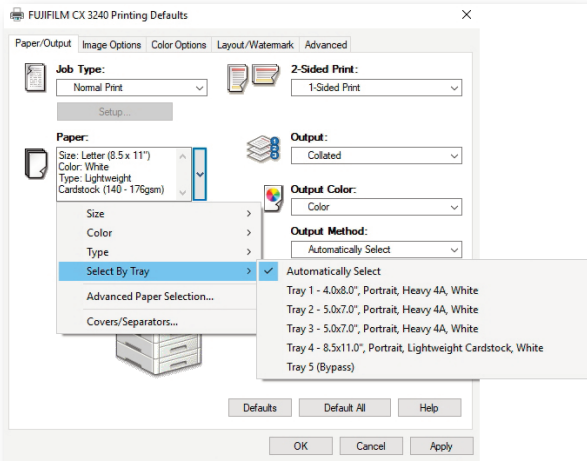


4.19. In **Paper** drop down, repeat process of selecting **Type to Lightweight Cardstock**.

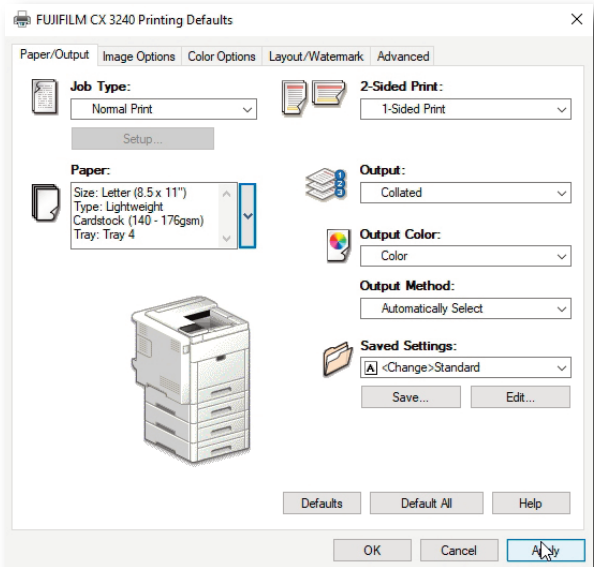


4. Paper/Media Settings

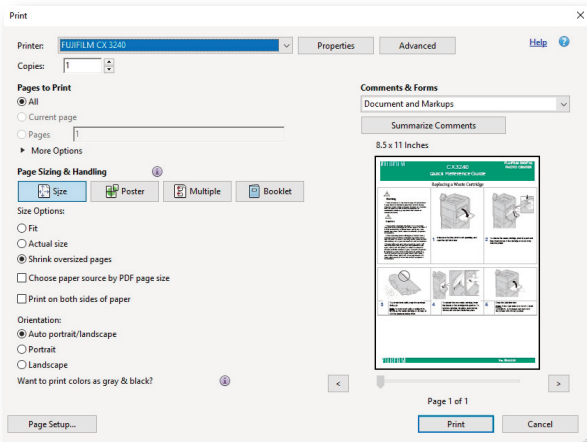
4.20. In **Paper** drop down, repeat process of selecting **Select by Tray** to 4.



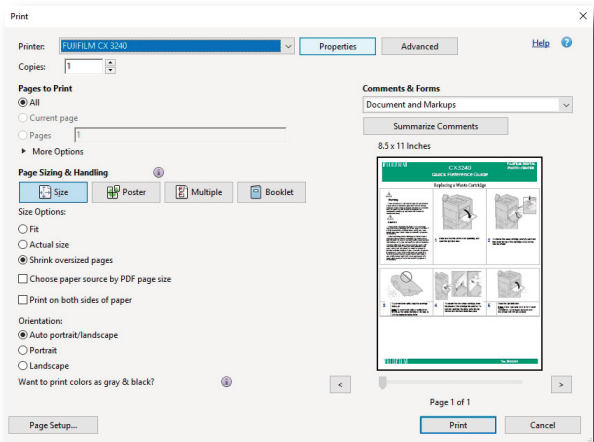
4.21. Once all settings have been made, confirm then click **Apply** prior to printing.



4.22. Select Printer **FUJIFILM CX3240**.

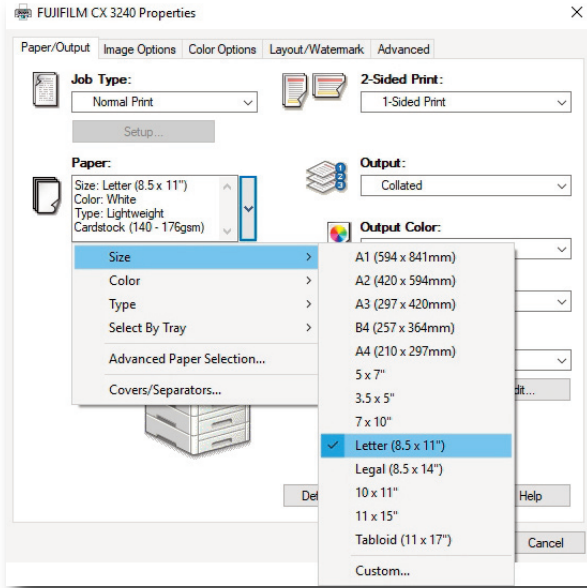


4.23. Select **Properties**.

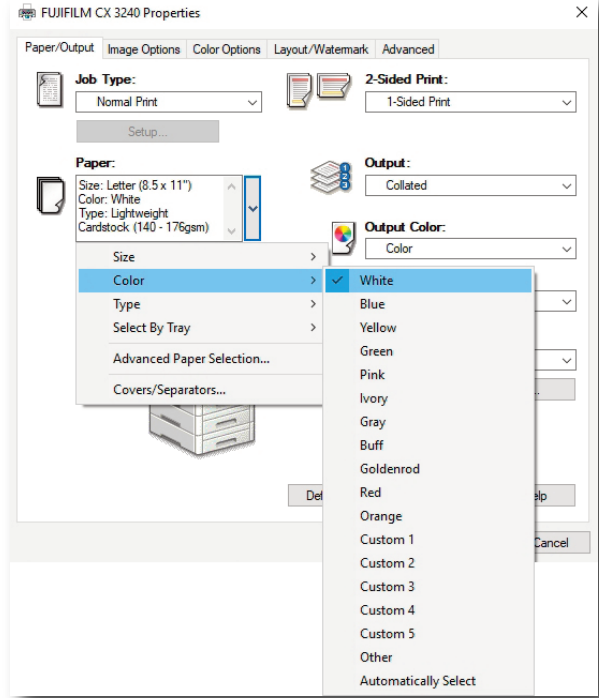


4. Paper/Media Settings

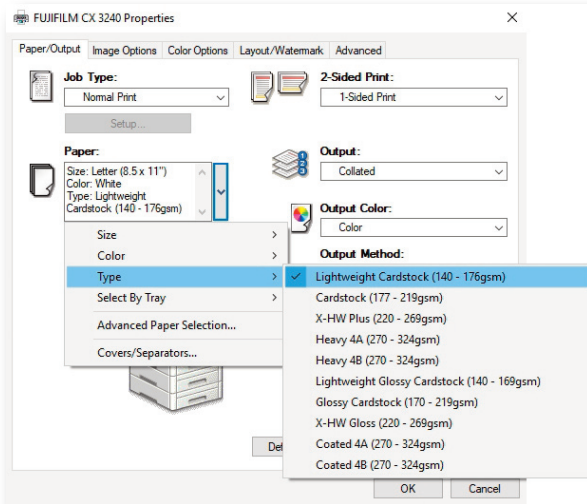
4.24. In **Paper** drop down, repeat process of selecting **Size 8.5x11**.



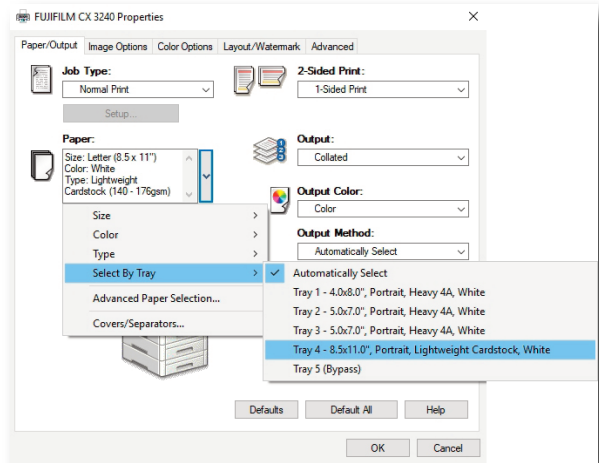
4.25. In **Paper** drop down, repeat process of selecting **Color** to **White**.



4.26. In **Paper** drop down, repeat process of selecting **Type** to **Lightweight Cardstock**.

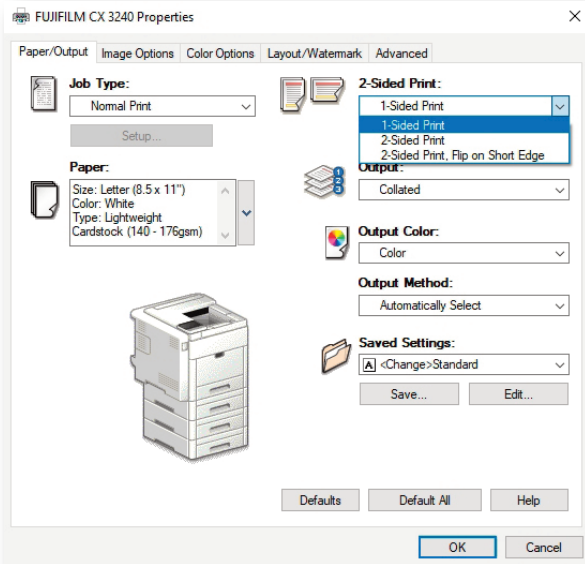


4.27. In **Paper** drop down, repeat process of selecting **Select by Tray** to **4**.

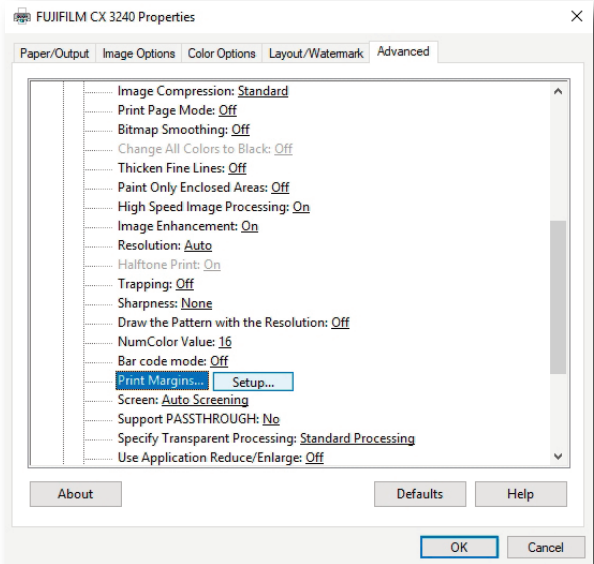


4. Paper/Media Settings

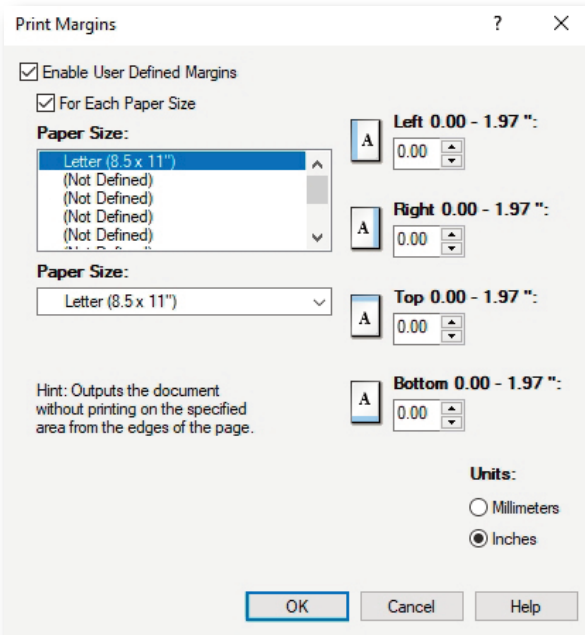
4.28. Select option of **Single Sided** or **2 Sided Print**.



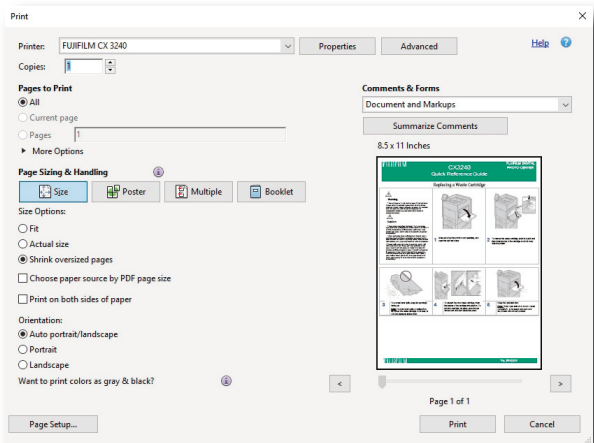
4.29. Select **Advanced** tab. Scroll down to **Print Margins**, highlight and click **Setup**.



4.30. Double check that **Margins** for **8.5x11** are set to **0.00**. After double checking Margins, click **OK**, **OK**, and then **Print**.



4.31. You may now set the **desired quantity** and select **Print**.



To set for a new paper size the following process must be repeated for each size.
Steps 4.3-4.31



FUJIFILM North America Corporation
200 Summit Lake Drive, Valhalla, NY 10595-1356, U.S.A