

- 
- The image features a black Fujifilm ER-530T Video Rhino-Laryngo Endoscope. The device has a control handle with a joystick and buttons, and a long, flexible insertion tube with a curved tip. The background is a dark teal gradient with abstract circular patterns and dotted lines. A small inset circle in the lower-left shows a close-up of the endoscope's tip.
- HIGH RESOLUTION
  - LARGER AND BRIGHTER IMAGES
  - ENHANCED ACCURACY

# ER-530T

Video Rhino-Laryngo Endoscope



GASTROENTEROLOGY

# ER-530T

Realizing enhanced observation, diagnosis and treatment



## HIGH RESOLUTION

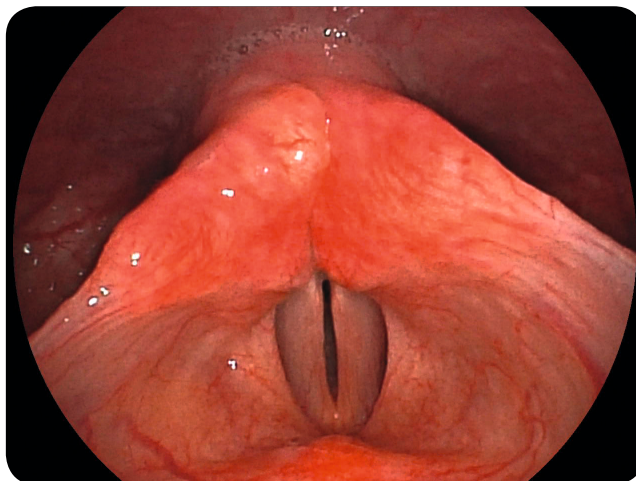
High resolution Super CCD technology is used in this new Rhino-Laryngo endoscope. This increase in image quality can help to enhance observation.

## LARGER AND BRIGHTER IMAGES

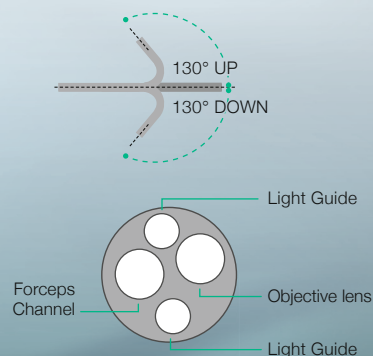
The image on the monitor can be displayed 1.4 times larger than conventional models and 140° field of view can be obtained. The new optical system allows brighter images to be produced.

## ENHANCED ACCURACY

Used in combination with VP-4450HD and FICE (Flexible spectral Imaging Color Enhancement),\* it provides better contrast for vascular and surface patterns in close focus, emphasizing the structure of tissue aspects and vessels. These features help to increase the accuracy of observation, diagnosis and treatment.



|                           |                      |
|---------------------------|----------------------|
| Viewing direction         | 0° (Forward viewing) |
| Field of view             | 140°                 |
| Observation range         | 2 – 50               |
| Bending capability        | Up 130° / Down 130°  |
| Distal end diameter       | 5.4 mm               |
| Flexible portion diameter | 4.9 mm               |
| Forceps channel diameter  | 2.0 mm               |
| Working length            | 400 mm               |
| Total length              | 670 mm               |



\* Fujifilm proprietary image processing technology

**FUJIFILM**

**FUJIFILM Europe GmbH**

Heesenstr. 31, 40549 Düsseldorf, Germany  
Tel.: +49 211-50 89 0, Fax: +49 211-50 89 8700  
www.fujifilm.eu, endoscopy@fujifilm.eu

Specifications are subject to change without notice. The name FUJIFILM and the FUJIFILM logo are trademarks of FUJIFILM Corporation. All other trademarks shown are trademarks of their respective owners. All rights reserved.  
05/16