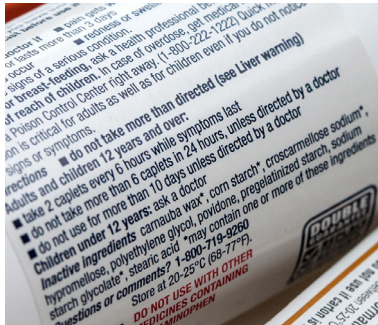
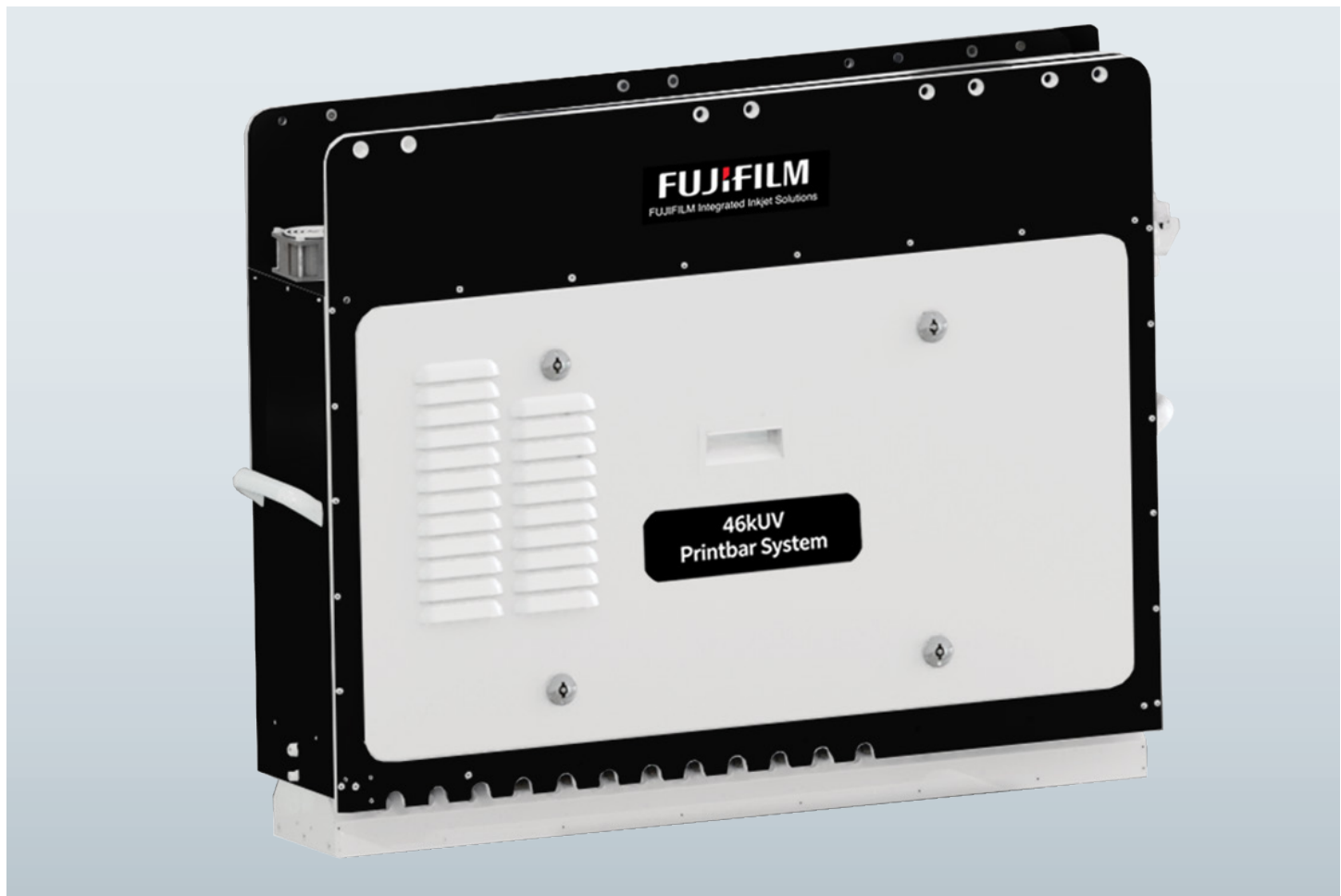




# FUJIFILM 46kUV Inkjet Printbar

An Industrial Inkjet UV Print System



Labels

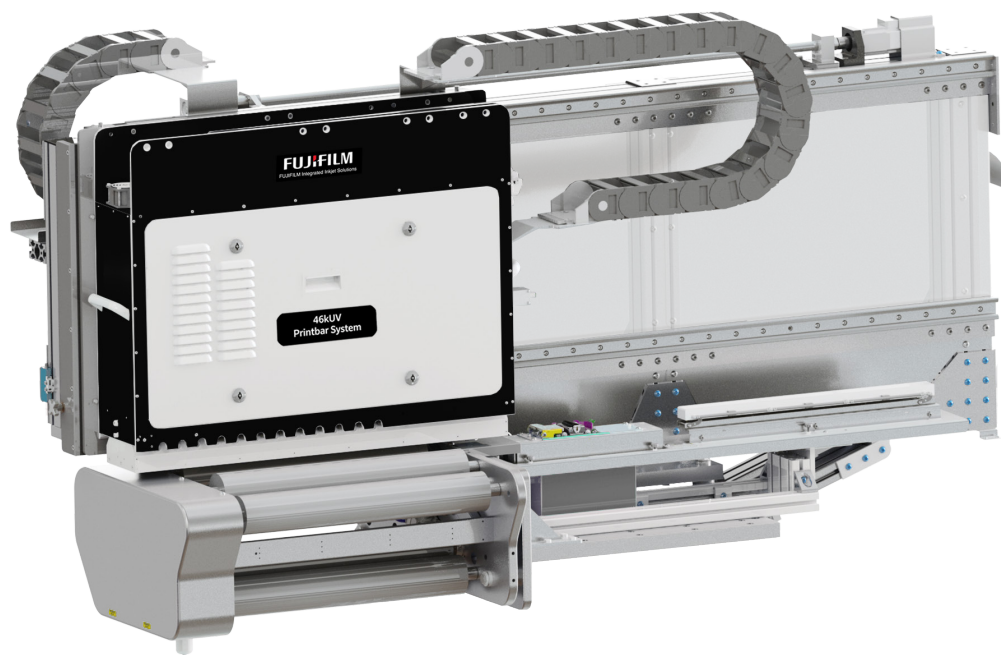


Transactional printing



Packaging

# About the FUJIFILM 46kUV Printbar System



With a flexible range of print widths and configurations, the FUJIFILM 46kUV Print System can seamlessly integrate into existing print production processes.

The system features the FUJIFILM SAMBA® printhead, which leverages the accuracy and precision of Silicon MEMS (Si-MEMS) processing to deliver breathtaking image quality.

Streamlined  
Touch Screen  
User Interface



Automatic nozzle  
maintenance

## Technology Spotlight: 3IC Variable Data Print File Creation

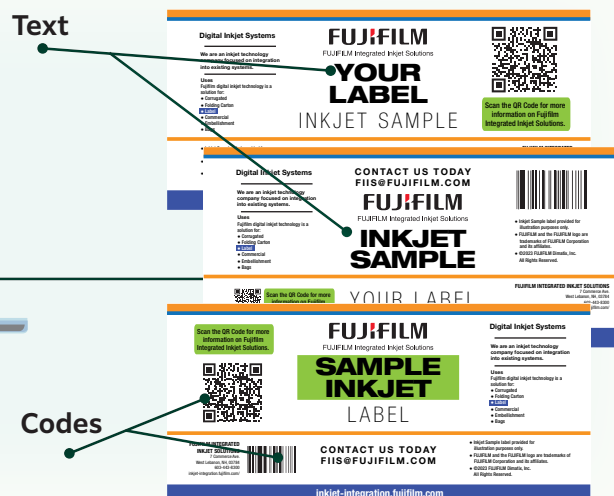
3IC is a lightweight, variable-data print composition application that comes as an option. It is designed for simplicity and ease-of-use when small jobs need to be set up quickly. 3IC runs on the print controller for convenient access.

### Database

|               |  |
|---------------|--|
| XPLYZ7N3      |  |
| YOUR LABEL    |  |
| XMFG3J2R      |  |
| 4X75PKQM      |  |
| INKJET SAMPLE |  |
| BFHVUECQ      |  |
| 75UKJHFL      |  |
| EY9H46CF      |  |
| 4W6RLPY5      |  |
| SAMPLE INKJET |  |
| PQSK1WIT      |  |
| OFEYDSAU      |  |
| K78DHQCW      |  |
| LFEAKMYX      |  |



### Variable Data Elements

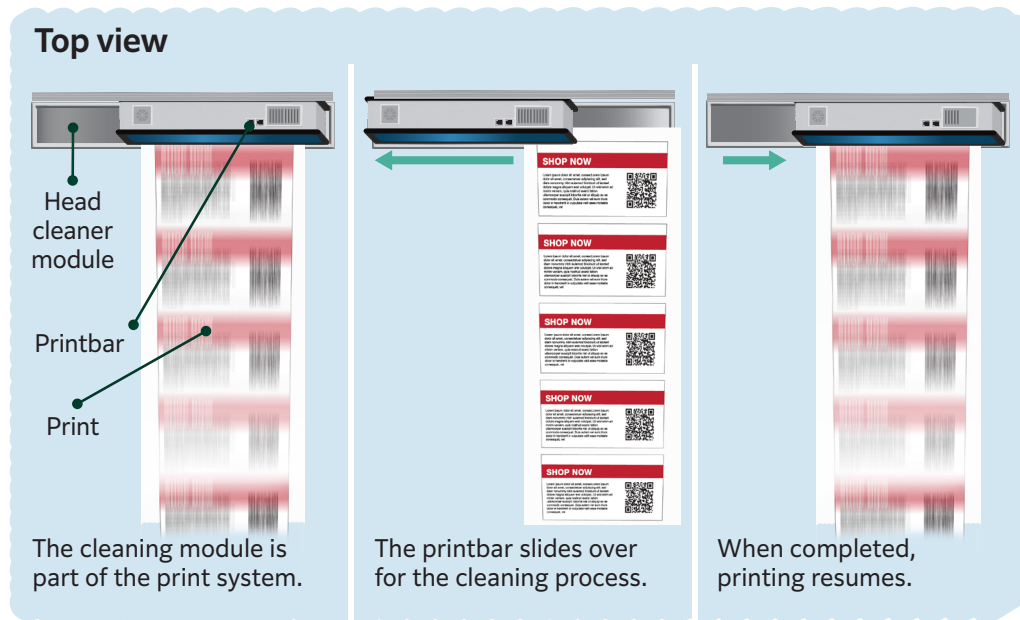


# Technology

Fujifilm has leveraged its imaging and information technologies to create an integrated print system that is adaptable to virtually any printing need.

## Cleaning and capping module

The cleaning and capping module keeps the printheads clean and functioning.



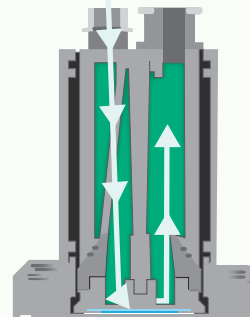
The cleaning/capping module is specially designed with precision engineered components to help maintain optimal image quality throughout the life of the 46kUV product.

The module is typically run once per shift, and at the touch of a button, cleans the printhead nozzle plate to ensure consistent print quality and reduce misdirected or clogged nozzles.



## Worldwide reach

FUJIFILM Integrated Inkjet Solutions provides global support for its customers. Fujifilm customers benefit from fully integrated, reliable print systems built to industrial standards. This includes production-ready, multi-color print systems fully integrated into the production process.



### REDIJET®

Fujifilm's patented REDIJET ink recirculation system keeps ink flowing all the way to the jetting nozzles, which allows for fast startup, high uptime, and easy cleaning.



With No Nozzle Loss



With Nozzle Loss

### Nozzle Redundancy

Fujifilm's SAMBA® printheads have 32 rows of nozzles each and are capable of multi-pulse waveform. These provide redundancy in the event of nozzle loss.

# Technical specifications

| 46kUV Printbar System     |  |  |
|---------------------------|--|--|
| Printbar dimensions       | Print Width                                    | Dimensions   |
|                           | 13.5 in  | 29.3 x 7.6 x 26.8 in (74.42 cm x 19.3 cm x 68.07 cm) |
|                           | 17 in  | 36.2 x 7.6 x 26.8 in (91.95 cm x 19.3 cm x 68.07 cm) |
|                           | 20.4 in  | 36.2 x 7.6 x 26.8 in (91.95 cm x 19.3 cm x 68.07 cm) |
|                           | 27.2 in  | 43 x 7.6 x 26.8 in (109.2 cm x 19.3 cm x 68.07 cm)   |
|                           | 40.9 in  | 56.6 x 7.6 x 26.8 in (143.7 cm x 19.3 cm x 68.07 cm) |
| Print Speed & Resolution* | Cross process resolution 1,200 dpi             |  |
|                           | 305 fpm / 93 mpm (Resolution: 1200x1200 dpi)   |  |
|                           | 500 fpm / 152.4 mpm (Resolution: 1200x600 dpi) |  |
| Color & Quality           | Monochrome                                     |  |
|                           | Native drop size 4ng                           |  |
|                           | Smallest font 2pt (4pt knockout)*              |  |

| Parameter 46kUV Printbar System  |  |
|--|--|
| Fluid  | UV inks  |
|  | Bulk ink container available in 20L, 210L, and 1000L   |
|  | Intermediate reservoir to allow for continuous printing while bulk container is being replaced |
| Print Controller   | Print queue management using Job Tickets and Hot Folders                                       |
|  | RIP-Stream; simultaneous RIP and print   |
|  | RIP-to-TIFFs; jobs are ripped in advance and saved as ready to print TIFFs                     |
| File Format & Page Data Stream   | Output synchronization for simplex or duplex printing  |
|  | Accepts PDF and TIFFs  |
|  | For legacy transaction data streams, a third party conversion utility may be required          |
| Interfaces   | Windows® 11 and Print Engine Control Software (PECS)   |
| Print Controller Dimensions  | 59.6 in x 19.6 in x 71.65 in, 800 lbs. (1515 mm x 499 mm x 1820 mm, 363 kg )                   |
| Power  | 208-240VAC, 1 Phase, 50/60Hz, 20 amps max  |
| *Capabilities may vary depending on end user application and substrate |  |

## Global resources

With office locations in every major geographic region, Fujifilm provides the latest technology quickly and is there to help at any time. Some of our locations include:

- FUJIFILM Australia
- FUJIFILM Canada
- FUJIFILM Mexico
- FUJIFILM Europe
- FUJIFILM Unigraphics
- FUJIFILM New Zealand
- FUJIFILM North America
- Offices in every major European country



Scan here to learn more!

