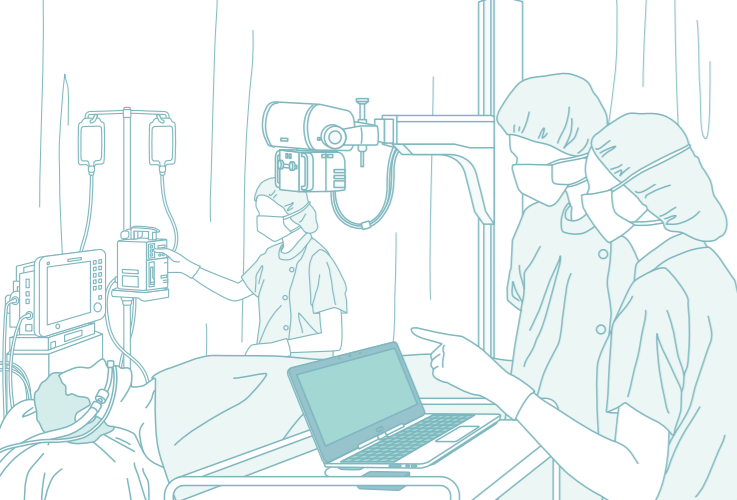


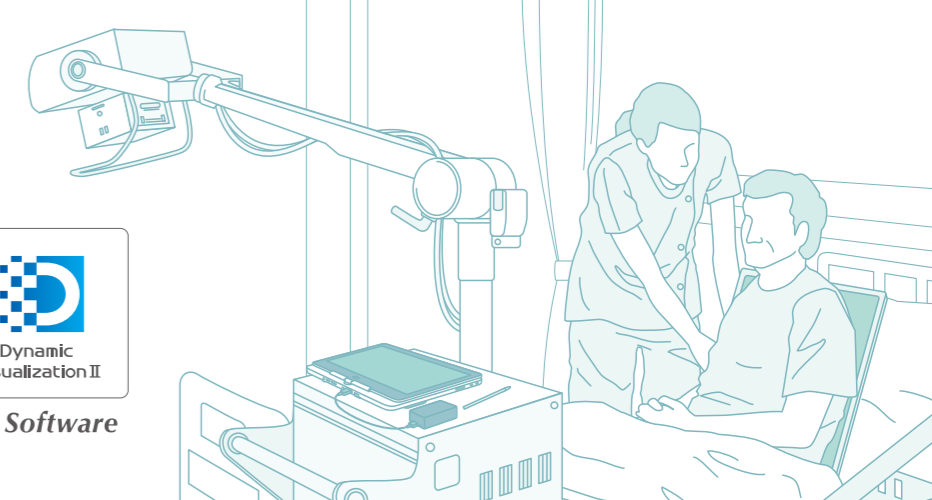
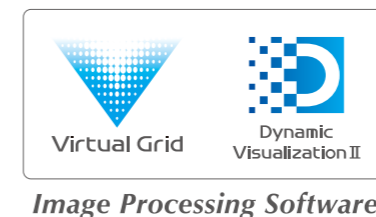
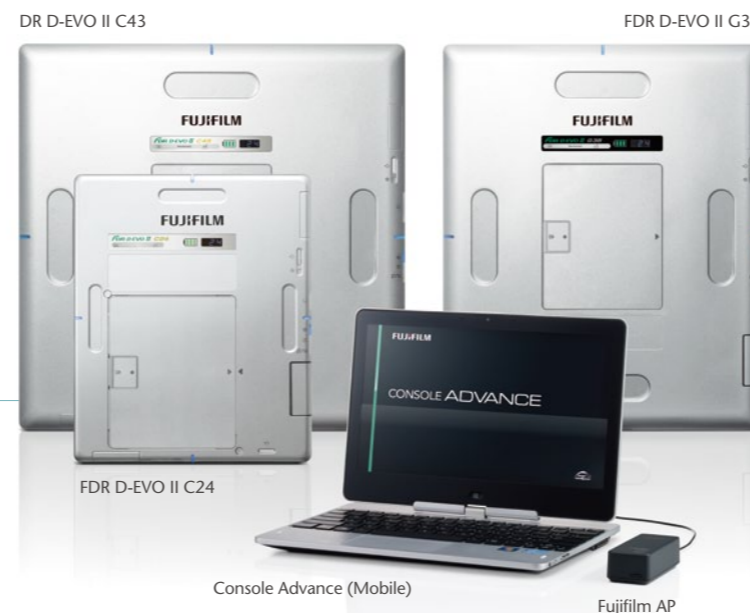
# ***FDR D-EVO II*** *Mobile Solution*

Transform your analogue mobile X-ray units into Digital Radiography systems quickly and easily with the FDR D-EVO II Mobile Solution





## FDR D-EVO II Mobile Solution



FDR D-EVO II Mobile Solution, a simple and easy transition to Digital imaging by upgrade of your analogue mobile X-ray system

### Transforms your Analogue system

#### Stress-free operation with DR System

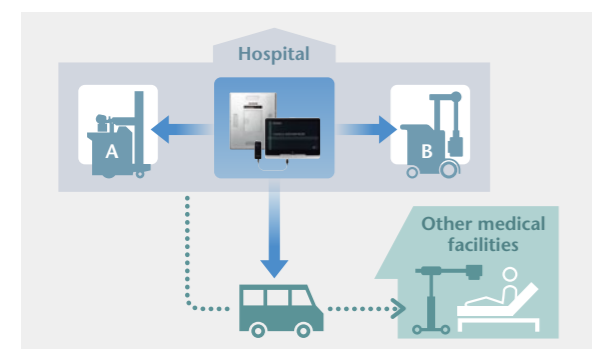
##### ■ Simple and Easy workflow

Compatible with a diverse array of X-ray units, the FDR D-EVO II Mobile Solution allows Digital Radiography imaging using your existing Analogue X-ray system.



Preview images are displayed only two seconds after an exposure is made meaning images can be checked quickly thus improving efficiency.

##### ■ Compatible with variable systems



Extremely compact and lightweighted, the FDR D-EVO II Mobile Solution can also be carried outside of hospital and facilitates a variety of medical needs.

### Enhances your mobile workflow with FUJIFILM's latest Flat Panel Detector and Image Processing

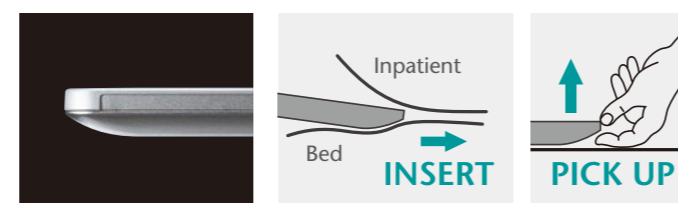
#### Flat panel detector with important qualities for mobile examination

## FDR D-EVO II

Versatile functionality for variety of clinical environments packed into a lightweight body. Superior mobility allows use in a variety of medical settings.

##### ■ Easy to Pickup, Easy to Insert

Rounded form of the FPD edge supports the easiness of "pick up and insert".



##### ■ Super Lightweight

A Core concept for D-EVO II, the Lightweight design enhances mobility.

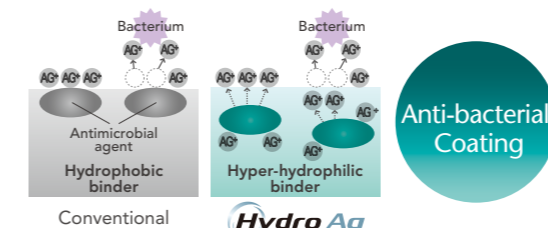


FDR D-EVO II G35

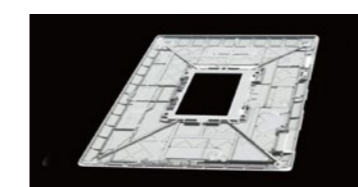
Approx.  
2.5 kg

##### ■ Protection and Durability

Waterproofing, a unique Anti-bacterial coating and innovative structure design gives piece of mind in tough medical environments.



IPX6



Shell-shape with rib magnesium-alloy

Load Capacity  
310 kg

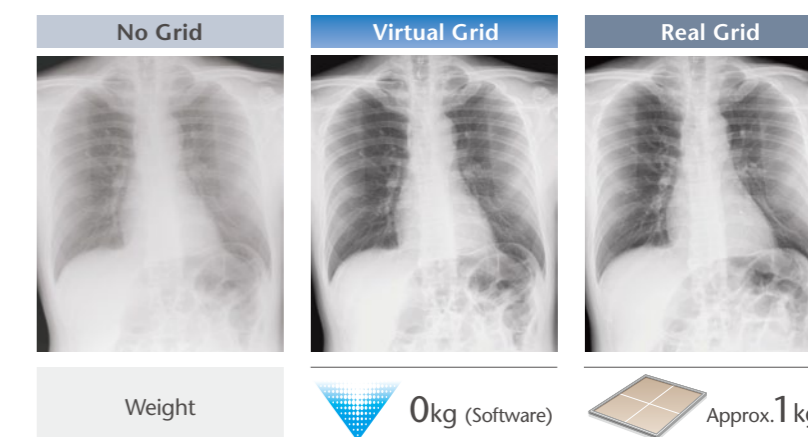
#### Acquisition without Anti-scatter Grid



This newly developed "scattered radiation estimation technology" calculates and removes scattered radiation signal.

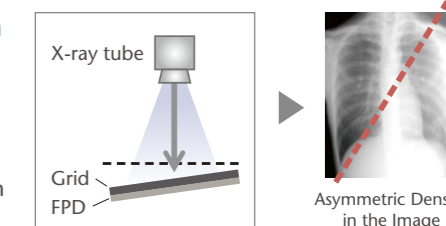
##### ■ Enhanced Workflow

Virtual Grid removes the requirement for handling a traditional anti-scatter grid.



##### ■ Grid cut off Prevention

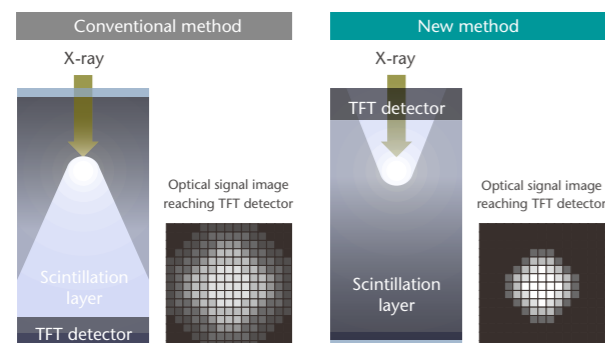
By using Virtual Grid software instead of anti-scatter grid, the asymmetric density in the image resulting from Mis-alignment of X-ray tube and FPD, (especially in mobile exam) is prevented.



## Offers High Quality Image

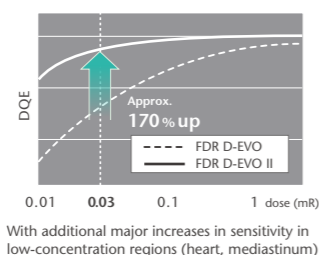
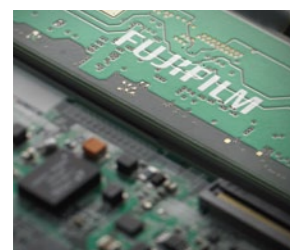
### ■ ISS Technology

Using Fujifilm's "ISS technology" the TFT sensor is placed in front of the scintillation layer. This permits a higher resolution image and reduced dose.



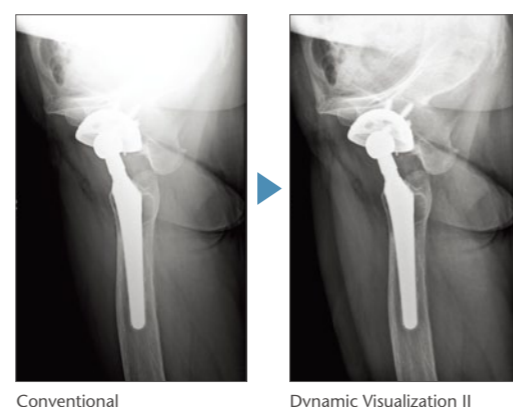
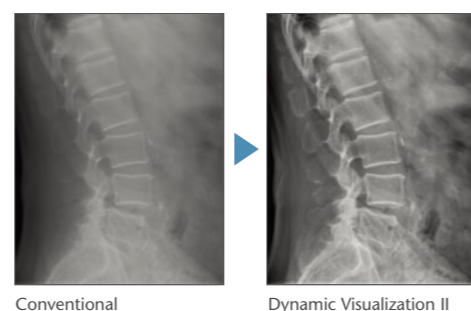
### ■ Noise Reduction Circuitry

The uniquely developed noise reduction circuit reduces noise in the image. It achieves 1.7 times the DQE of existing systems with a 0.03 mR dose.

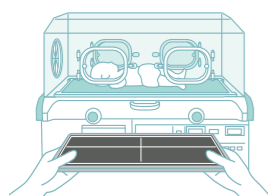


### ■ Dynamic Visualization II

Advanced recognition algorithms automatically adjust Contrast and Density for individual body parts based on calculation of estimated 3D image data.



## Matching detector selection to the clinical requirement



A range of DR detectors are available. Multiple panels can be carried on the system simultaneously, allowing the user the flexibility to change techniques mid-round. Neonatal examinations in incubators are simplified by the use of the C24.

	24cm × 30cm	35cm × 43cm		43cm × 43cm	
	D-EVO II C24	D-EVO II C35	D-EVO II G35	D-EVO II C43	D-EVO II G43
Scintillator	CsI (Cesium iodide)	CsI (Cesium iodide)	GOS (Gadolinium oxysulfide)	CsI (Cesium iodide)	GOS (Gadolinium oxysulfide)
Weight (including battery)	Approx. 1.5kg (3.3lbs.)	Approx. 2.6kg (5.7lbs.)	Approx. 2.5kg (5.5lbs.)	Approx. 3.2kg (7.1lbs.)	Approx. 3.1kg (6.8lbs.)

External appearance and specifications are subject to change without notice.  
All brand names or trademarks are the property of their respective owners.  
All products require the regulatory approval of the importing country.  
For details on their availability, contact our local representative.  
Please contact FUJIFILM's authorized distributor for FDR Go flex.



**FUJIFILM**  
Value from Innovation

**Mobile Solution**

FDR D-EVO II Mobile Solution

## FDR D-EVO II Mobile Solution

Transform your analogue mobile X-ray units into Digital Radiography systems quickly and easily with the FDR D-EVO II Mobile Solution



**FUJIFILM**

FUJIFILM Corporation

26-30, NISHIAZABU 2-CHOME, MINATO-KU, TOKYO 106-8620, JAPAN  
<http://www.fujifilm.com/products/medical/>

Ref. No. XB-1042E (SK-17-02-F1079-F9711) Printed in Japan ©2017 FUJIFILM Corporation